

## INSTRUCTIONS

1. Original and/or subsequent record used to evaluate the corner position.
2. Description of evidence found, note discrepancies in the record, state method of establishing lost or obliterated corners.
3. Description of monument and accessories set to perpetuate the corner position.
4. Sketch of corner, show all pertinent data which can best be shown in a sketch example, corner marking, topography ties, position of accessories, etc.
5. Certification must be signed and sealed by Land Surveyor registered in the State of Montana.
6. Fill in Cross Index & Section Diagram at bottom of sheet.

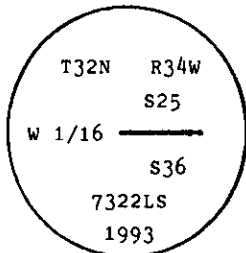
## CERTIFIED CORNER RECORDATION

Corner W 1/16 OF Sec. 25 T. 32 N. R. 34 W. P.M.M. Lincoln County

I. No previous record.

II. No previous record.

III. At the position determined by survey, set a 3/4 in. dia. driveable aluminum rod 24 ins. in the ground, with a 3 1/4 in. dia. U.S.D.A. Forest Service aluminum cap, marked as shown:



Established two new bearing trees:

A fir, 9 ins. in diam., bears S2°W, 41.2 ft. dist., scribed W 1/16 S 36 BT.

A fir, 13 ins. in diam., bears N43°W, 15.8 ft. dist., scribed W 1/16 S 25 BT.

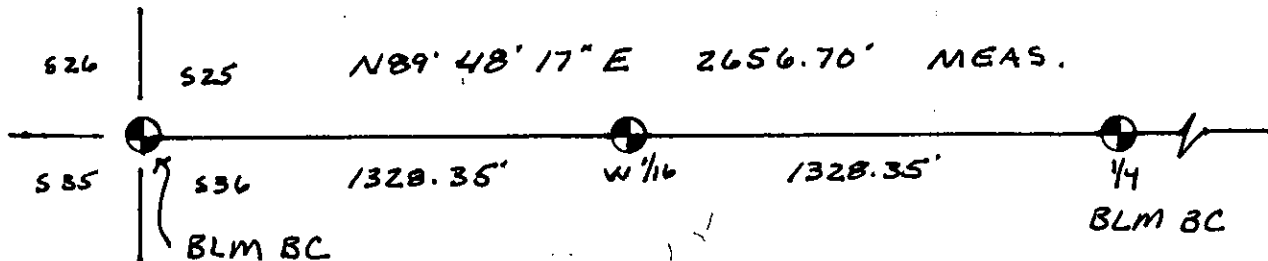
Painted a red band around bearing trees and attached Land Survey Monument and Bearing Tree signs.

Set a 6 ft. galvanized steel guard post with Land Survey Marker and Property Boundary decals, SOUTH, 4 ft.

Magnetic Declination 20° East

N 89° 57' E 1903 GLO

N 89° 47' 29" E 2657.00' 1983 C.O.S. By T.C.Hill



SKETCH OF CORNER



## CERTIFICATION

Thomas M. Hommel

I, Thomas M. Hommel certify the information shown herein is true and correct.

Thomas M. Hommel  
Signature Ground Party Chief

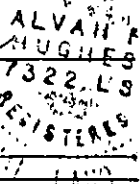
Alvah F. Hughes

I, Alvah F. Hughes certify that this Corner Record correctly represents work performed by me or under my direction in compliance with the "Corner Recordation Act" (70-22-101, et seq., M.C.A.)

Alvah F. Hughes  
Signature of Surveyor & Seal

Date: 12/16/93 Reg. No. 7322LS

Employer: U.S. FOREST SERVICE

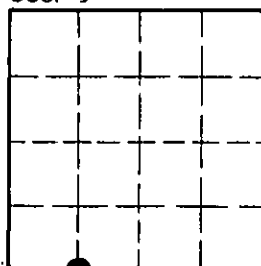


Office of Clerk and Recorder, County of Lincoln. This "corner record" was filed for record on Jan 12, 1994 was noted on the cross-index plat and is assigned page No. 6098, in book No. Coral M. Cummings & Co.

County Official

Cross Index No. V-22 T. 32 N R. 34 W P.M.M.

Sec. 25



• corner this sheet