

INSTRUCTIONS

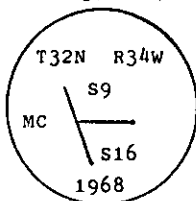
1. Original and/or subsequent record used to evaluate the corner position.
2. Description of evidence found, note discrepancies in the record, state method of establishing lost or obliterated corners.
3. Description of monument and accessories set to perpetuate the corner position.
4. Sketch of corner, show all pertinent data which can best be shown in a sketch example, corner marking, topography ties, position of accessories, etc.
5. Certification must be signed and sealed by Land Surveyor registered in the State of Montana.
6. Fill in Cross Index & Section Diagram at bottom of sheet.

CERTIFIED CORNER RECORDATION

Corner MC Secs. 9 & 16 T. 32 N. R. 34 W. P.M.M. Lincoln County

I. 1903 G.L.O. record by Allen B. Benedict: Set a stone monument and two bearing trees.

1968 B.L.M. remonumentation record by Woodrow E. Damn et al: "The meander cor. of secs. 9 and 16, on the right bank of the Kootenai River, monumented with a limestone, 18x10x4 ins., firmly set, mkd. MC on the W. face, and witnessed by the remains of the original bearing trees. At the corner point, set an iron post, 30 ins. long, 2 1/2 ins. diam., 24 ins. in the ground, with brass cap mkd.



from which:

The remains of the original bearing tree:

- A rotted stump, bears S17 3/4° E, 66 lks. dist., having no visible marks. (Record)
- A stump hole, bears N8 1/2° W, 62 lks. dist. (Record)

The new bearing trees:

- A pine, 14 ins. diam., bears S36 1/2° E, 146 lks. dist., mkd. T32N R34W S16 MC BT.
- A pine, 30 ins. diam., bears N23° W, 121 lks. dist., mkd. T32N R34W S9, MCHBT.

Bury the original stone alongside the iron post."

II. Found a 2 1/2 ins. diam. iron pipe, 12 ins. above the ground with 3 1/4 ins. diam. B.L.M. brass cap, marked as shown above; from which:

- A pine, 21 ins. diam., bears S36° E, 96.4 ft. (146 lks.) dist., healed face.
- A pine stump, 30 ins. diam., bears N23° W, 79.9 ft. (121 lks.) dist., mkd. BT.

III. Establish one new Bearing Tree:

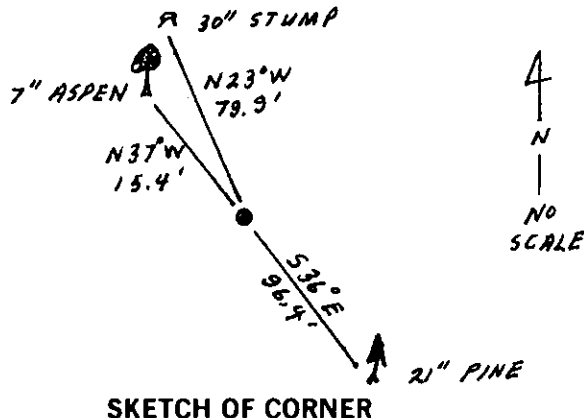
An aspen, 7 ins. diam., bears N37° W, 15.4 ft. dist., mkd. T32N R34W S9 MC BT.

Painted red bands around the bearing trees and attached Land Survey Monument and Bearing Tree signs.

Set a 6 ft. galvanized steel guard post with Land Survey Marker and Property Boundary decals, East, 4 ft.

Build a rock collar around pipe monument.

Magnetic Declination: 20° East



SKETCH OF CORNER

CERTIFICATION

Thomas M. Hommel

I, Thomas M. Hommel certify the information shown herein is true and correct.

Thomas M. Hommel
Signature Ground Party Chief

Alvah F. Hughes

I, Alvah F. Hughes certify that this Corner Record correctly represents work performed by me or under my direction in compliance with the "Corner Recordation Act" (70-22-101, et seq., M.C.A.)

Alvah F. Hughes
Signature of Surveyor & Seal

Date: 12/18/92 Reg. No. 7322LS

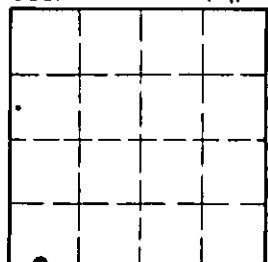
Employer: U.S. FOREST SERVICE

Office of Clerk and Recorder, County of Lincoln. This "corner record" was filed for record on Jan 19, 1993 was noted on the cross-index plat and is assigned page No. 5313, in book No. Coral M. Cummings G.O.B.

County Official

Cross Index No. J-9.5 T. 32 N R. 34 W P.M.M.

Sec. 9



• - corner this sheet