

CERTIFIED LAND CORNER RECORDATION

SECTION 9 TOWNSHIP 32 NORTH, RANGE 34 WEST, M.P.M.

DESCRIPTION OF CORNER EVIDENCE FOUND, AND ORIGINAL RECORD (IF KNOWN)

Descriptions of corners on diagram on other side.

DESCRIPTION OF MONUMENT AND ACCESSORIES ESTABLISHED  
TO PERPETUATE THE ORIGINAL LOCATION OF THIS CORNER:

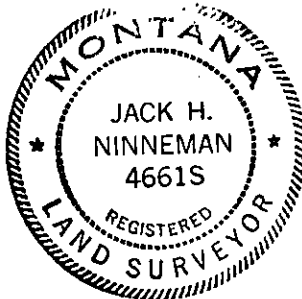
Descriptions of corners set reported on diagram  
on other side.

Date of work: March 1977

SKETCH, WITH COURSE AND DISTANCE TO ADJACENT CORNERS IF DETERMINED IN THIS SURVEY.  
(MAY SKETCH OR PASTE REPRODUCTION ON REVERSE SIDE.)

SEE DIAGRAM ON OTHER SIDE

Surveyor's Seal



I, JACK H. NINNEMAN  
certify that the information shown herein is true and  
correct.

Jack H. Ninneman  
Signature of Ground Party Chief

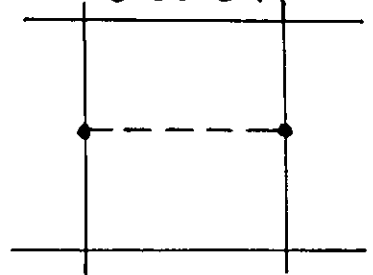
I, Jack H. Ninneman  
certify that I have carefully performed or reviewed the  
work done on the diagrammed corner as reported on this  
recording form and approve the same.

Jack H. Ninneman  
Signature of Surveyor

DIAGRAM OF CORNER:

SEE reverse side

N. 9-32-34



● = Corner recorded on the sheet

4661 S  
Registration Number

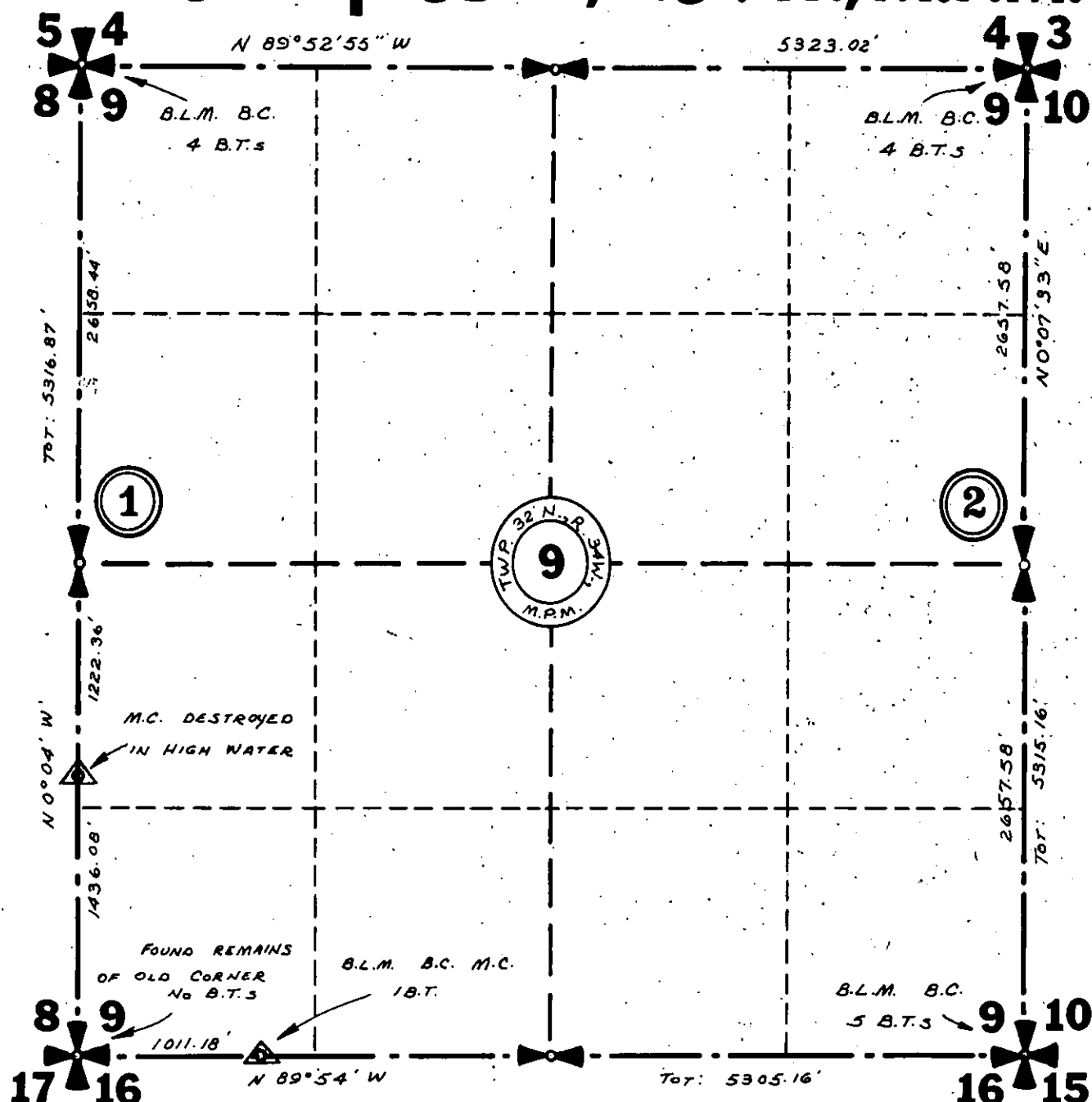
Office of Clerk and Recorder, County of Lincoln

This "corner record" was filed for record on the 12<sup>th</sup> day of May 1978, was noted on the cross-index plat and is  
assigned page No. 527, in book No. 1

Eleanor A. Vaughn by Deedly Maitre  
County Official

# Sec. 9 Twp. 32 N., R. 34 W., M.P.M.

73



(1) Set 5/8"x24" Steel Rod with Cap stamped:  
J.H.N. 4661 S.

No B.T.s scribed or posted.

(2) Set 5/8"x24" Steel Rod with Cap stamped:  
J.H.N. 4661 S.

24" Pfr bears N 40°W 10.7 Ft.  
Scribed 1/4 S 9 BT & Posted.