

# CERTIFIED LAND CORNER RECORDATION

(REFERENCE FSM 7153.53)

## DESCRIPTION OF CORNER EVIDENCE FOUND, AND ORIGINAL RECORD (IF KNOWN)

FOUND: None

RECORD: No previous record.

## DESCRIPTION OF MONUMENT AND ACCESSORIES ESTABLISHED TO PERPETUATE THE ORIGINAL LOCATION OF THIS CORNER:

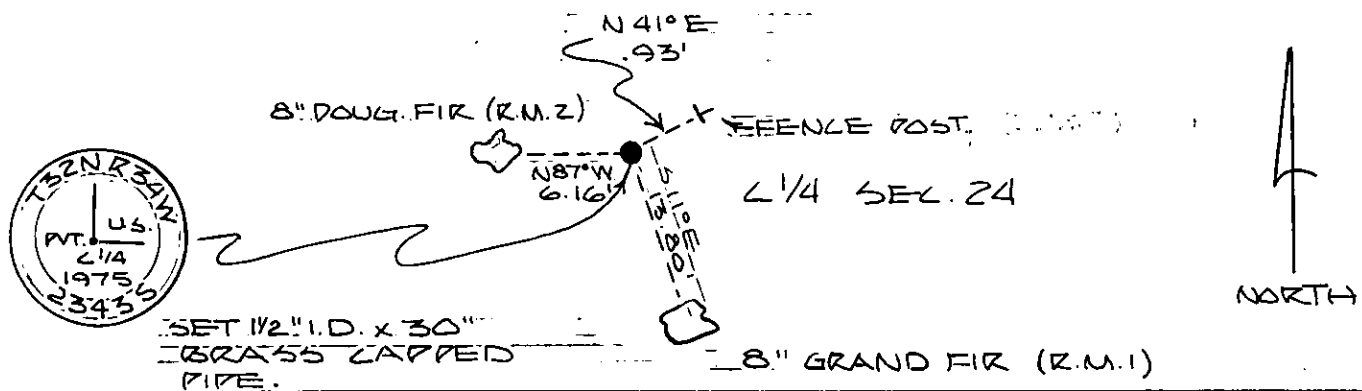
Date of work: NOV. 1975

We set 1 1/2" I.D. x 30" Forest Service Brass Cap 20" in the ground for Center 1/4 corner stamped as per sketch. We mounded stones around brass cap and painted it red.

We make reference monuments for reference to corner. Description of reference monuments as per sketch.

Steel Fence post with land survey monument and location posters located as per sketch.

## SKETCH, WITH COURSE AND DISTANCE TO ADJACENT CORNERS IF DETERMINED IN THIS SURVEY. (MAY SKETCH OR PASTE REPRODUCTION ON REVERSE SIDE.)



Surveyor's Seal

I, R. G. RILEY  
certify that the information shown herein is true and correct.

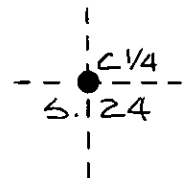
*R. G. Riley*  
Signature of Ground Party Chief

I, J. T. SHAW  
certify that I have carefully performed or reviewed the work done on the diagrammed corner as reported on this recordation form and approve the same.

*J. T. Shaw*  
Signature of Surveyor

DIAGRAM OF CORNER:

N.



● = Corner recorded on the sheet  
S. 24 T. 32 N. R. 34 W.  
P.M., M.

23435  
Registration Number

Office of Clerk and Recorder, County of Lincoln 2:25 p.m.

This "corner record" was filed for record on the 4th day of March 1976, was noted on the cross-index plat and is assigned page No. 445, in book No. 1

Eleanor Z. Hughes by Sherry Davis  
County Official deputy

Cross Index No. P-23 T. 32 N R. 34 W Mer.