

# CERTIFIED LAND CORNER RECORDATION

(REFERENCE FSM 7153.53)

## DESCRIPTION OF CORNER EVIDENCE FOUND, AND ORIGINAL RECORD (IF KNOWN)

**FOUND:** A stone set solid in ground with 4 notches on North and 2 notches on South.

**RECORD:** Set a limestone, 15 x 12 x 6 ins., 10 ins. in the ground, for cor. of Secs. 7, 12, 13, and 18, marked with 4 notches on South and 2 notches on North edges,

We found 4 original bearing trees as per drawing.

**RECORD:** (From which) a Tamarack, 18 ins. diam., bears N 64° 30' E, 32 lks. dist., marked T32N, R33W, S. 7 B.T. A Tamarack, 10 ins. diam., bears S 64° 30' E, 65 lks. dist., marked T32N, R33W, S. 18 B.T. A Fir, 18 ins. diam., bears S 66° 30' W, 34 lks. dist., marked T32N, R34W, S. 13 B.T. A Tamarack, 10 ins. diam., bears N 42° W, 53 lks. dist., marked T32N, R34W, S. 12 B.T.

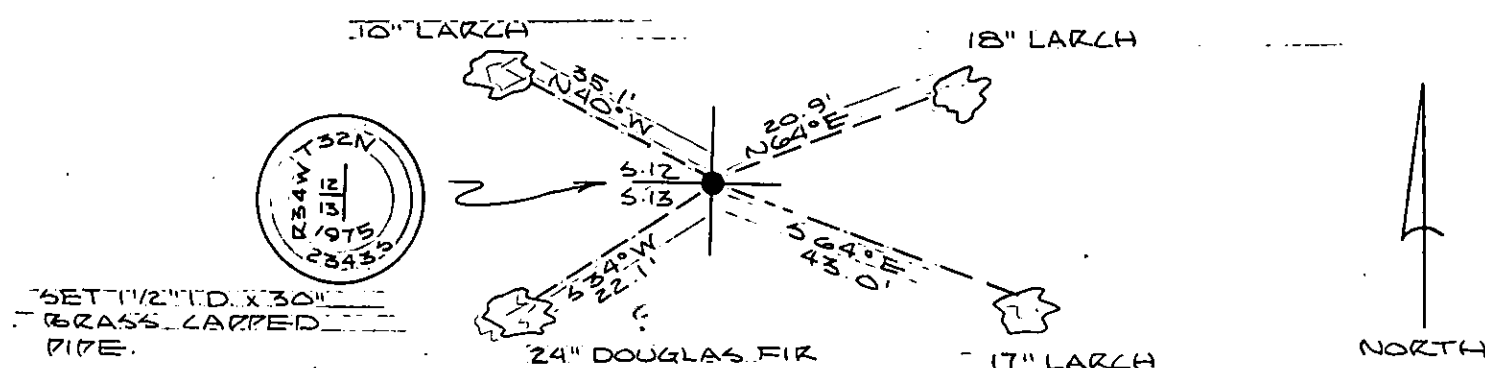
## DESCRIPTION OF MONUMENT AND ACCESSORIES ESTABLISHED TO PERPETUATE THE ORIGINAL LOCATION OF THIS CORNER:

Date of work: SEPT 9, 1975

We set 1 1/2" I.D. x 30" Brass Cap 24" in ground marked as per sketch. Original stone is buried alongside. We mound stones around brass cap pipe and paint it red.

All bearing trees in good shape, signed and painted red.

## SKETCH, WITH COURSE AND DISTANCE TO ADJACENT CORNERS IF DETERMINED IN THIS SURVEY. (MAY SKETCH OR PASTE REPRODUCTION ON REVERSE SIDE.)



Surveyor's Seal

I, R. G. RILEY  
certify that the information shown herein is true and correct.

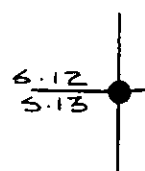
*R. G. Riley*  
Signature of Ground Party Chief

I, J. T. SHAW  
certify that I have carefully performed or reviewed the work done on the diagrammed corner as reported on this recordation form and approve the same.

*J. T. Shaw*  
Signature of Surveyor

DIAGRAM OF CORNER:

N.



● = Corner recorded on the sheet  
T32N, R34W, S. 12 B.T.

23435  
Registration Number

Office of Clerk and Recorder, County of Lincoln 2:20 p.m.

This "corner record" was filed for record on the 4th day of march 1976, was noted on the cross-index plat and is assigned page No. 444, in book No. 1

Eleanor L. Vaughn by Sherry Davis  
County Official Deputy

Cross Index No. J-25 T 32N R 34W Mer.