

# CERTIFIED LAND CORNER RECORDATION

(REFERENCE FSM 7153.53)

## DESCRIPTION OF CORNER EVIDENCE FOUND, AND ORIGINAL RECORD (IF KNOWN)

FOUND: None

RECORD: No previous record

## DESCRIPTION OF MONUMENT AND ACCESSORIES ESTABLISHED TO PERPETUATE THE ORIGINAL LOCATION OF THIS CORNER:

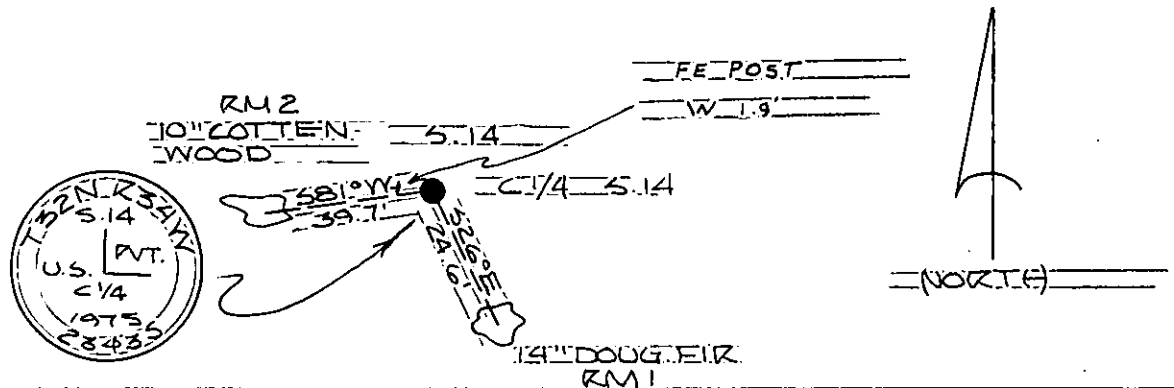
Date of work: DEC 1975

We set a 1 1/2" I.D. x 30" brass-capped pipe 24" in ground, stamped as per sketch.

We make 2 reference monuments as per sketch.

We also set steel posts with location poster as per sketch.

## SKETCH, WITH COURSE AND DISTANCE TO ADJACENT CORNERS IF DETERMINED IN THIS SURVEY. (MAY SKETCH OR PASTE REPRODUCTION ON REVERSE SIDE.)



Surveyor's Seal

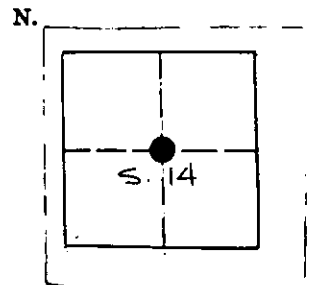
I, R.G. RILEY  
certify that the information shown herein is true and correct.

*[Signature]*  
Signature of Ground Party Chief

I, J.J. SHAW  
certify that I have carefully performed or reviewed the work done on the diagrammed corner as reported on this recordation form and approve the same.

*[Signature]*  
Signature of Surveyor

## DIAGRAM OF CORNER:



● = Corner recorded on the sheet

C/4 S. 14 T. 32 N. R. 34 W.  
R.M.M.

28435  
Registration Number

Office of Clerk and Recorder, County of Lincoln 2:05 p.m.

This "corner record" was filed for record on the 4<sup>th</sup> day of March 1976, was noted on the cross-index plat and is assigned page No. 441, in book No. 1

Eleanor Z. Laughon, by Sherry Davis  
County Official deputy

Cross Index No. 1-19 T. 32 N. R. 34 W. Mer.