

CERTIFIED LAND CORNER RECORDATION

DESCRIPTION OF CORNER EVIDENCE FOUND, AND ORIGINAL RECORD (IF KNOWN)

FOUND: Nothing.  
RECORD: No previous record.

DESCRIPTION OF MONUMENT AND ACCESSORIES ESTABLISHED  
TO PERPETUATE THE ORIGINAL LOCATION OF THIS CORNER:

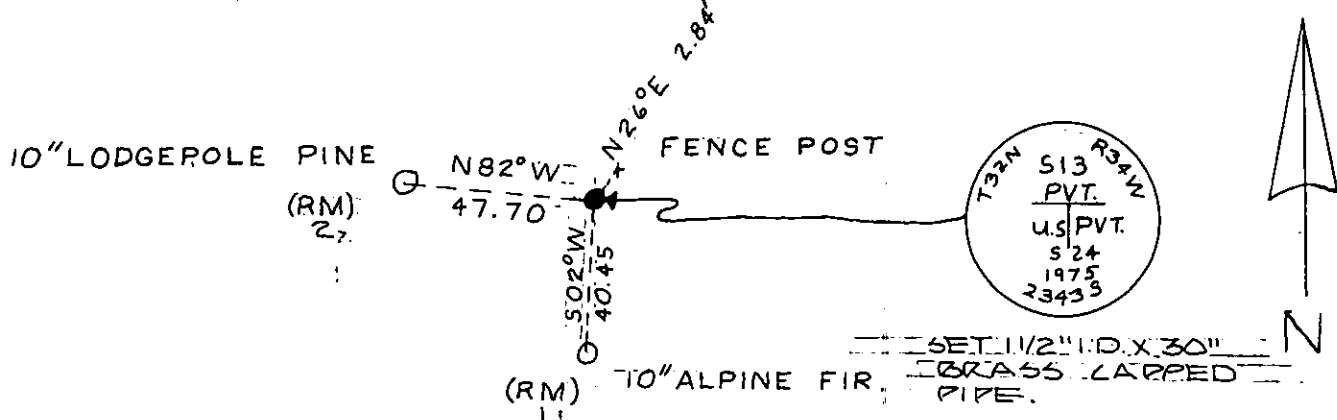
Date of work: DEC 5 1975

We set a 1 1/2" I.D. x 30" Forest Service Brass Capped Pipe 24" in ground stamped as per sketch below.

We mounded rocks around Brass Capped Pipe and painted red.

We made 2 reference monument trees and sign scribe and painted them. See sketch. Steel fence post at corner with land survey monument and locations posters attached.

SKETCH, WITH COURSE AND DISTANCE TO ADJACENT CORNERS IF DETERMINED IN THIS SURVEY.  
(MAY SKETCH OR PASTE REPRODUCTION ON REVERSE SIDE.)



Surveyor's Seal

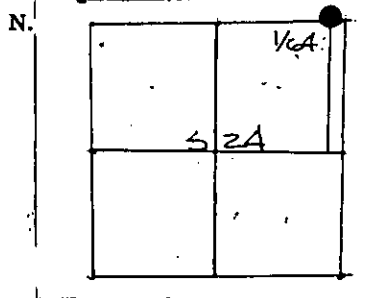
I, R. GORDON RILEY  
certify that the information shown herein is true and correct.

Signature of Ground Party Chief

I, J.T. SHAW  
certify that I have carefully performed or reviewed the work done on the diagrammed corner as reported on this recordation form and approve the same.

Signature of Surveyor

DIAGRAM OF CORNER:



● = Corner recorded on the sheet  
T32N R34W, P.M., M.  
E-E 1/4

2343 S  
Registration Number

Office of Clerk and Recorder, County of Lincoln 1:25 p.m.  
This "corner record" was filed for record on the 4th day of march 1976, was noted on the cross-index plat and is assigned page No. 433, in book No. 1  
Elleanor Z. Vaughn, by Cherry Davis  
County Official deputy