

INSTRUCTIONS

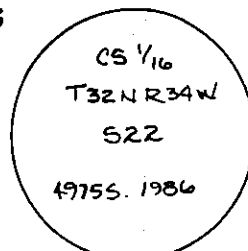
1. Original and/or subsequent record used to evaluate the corner position.
2. Description of evidence found, note discrepancies in the record, state method of establishing lost or obliterated corners.
3. Description of monument and accessories set to perpetuate the corner position.
4. Sketch or corner, show all pertinent data which can best be shown in a sketch example, corner marking, topography ties, position of accessories, etc.
5. Certification must be signed and sealed by Registered Land Surveyor in State of Montana.
6. Fill in Cross Index & Section Diagram at bottom of sheet.

CERTIFIED CORNER RECORDATION

Corner CS 1/16 Section 22 T. 32N. R. 34W. P.M.M. Lincoln County

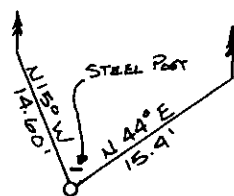
I. Davis Surveying Inc. 1986

I set a $3\frac{3}{4}$ " diam. Aluminum Cap on a $5/8$ " diam. x 4' long rebar driven into the ground. Stamped;



from which,

A 6" red fir bears N.15°W. 14.60 feet from center of tree. Scribed CS 1/16 S22 BT. Painted a red band around tree. Notched at root crown.
A 6" red fir bears N.44°E. 15.40 feet from center of tree. Scribed CS 1/16 S22 BT. Painted a red band around tree. Notched at root crown.
Placed BT sign #54-3 on front and warning sign #54-9 on back of trees.
Set a steel post 1' north of corner.



SKETCH OF CORNER

CERTIFICATION

I, Ken E. Davis
certify the information shown herein is true and correct.

Tom Davis
Shannon Ground Party Chief

I, Ken E. Davis
certify that this Corner Record correctly represents work performed by me and by direction of compliance with the "Corner Recordation Act" (Title 82, Chapter 1, Section 301, M.C.L.)

Signature of Surveyor & Seal

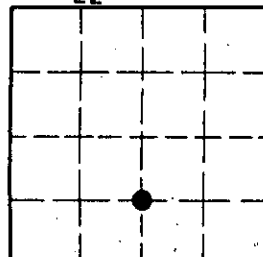
Date: 12/29/86 Reg. No. 10955

Employer: Davis Surveying Inc.

Office of Clerk and Recorder, County of Lincoln. This "corner record" was filed for record on the Dec 29 day of 1986 was noted on the cross-index plat and is assigned page No. 3455 in book No. _____

County Official Janet H. Sigel

Sec. 22



• - corner this sheet

Cross Index No. _____ T. _____ R. _____ P.M.M.