

CERTIFIED LAND CORNER RECORDATION

DESCRIPTION OF CORNER EVIDENCE FOUND, AND ORIGINAL RECORD (IF KNOWN)

Surveys in Section 26 Township 32 N., Range 34 W., M.P.M.
Evidence found described on reverse side attached

DESCRIPTION OF MONUMENT AND ACCESSORIES ESTABLISHED
TO PERPETUATE THE ORIGINAL LOCATION OF THIS CORNER: Completed December
Date of work: 1969

See reverse

SKETCH, WITH COURSE AND DISTANCE TO ADJACENT CORNERS IF DETERMINED IN THIS SURVEY.
(MAY SKETCH OR PASTE REPRODUCTION ON REVERSE SIDE.)

Sketch attached to reverse side

Surveyor's Seal

I, Jack H. Ninneman
certify that the information shown herein is true and correct.

Jack H. Ninneman
Signature of Ground Party Chief

I, Jack W. Ninneman
certify that I have carefully performed or reviewed the work done on the diagrammed corner as reported on this recordation form and approve the same.

Jack W. Ninneman
Signature of Surveyor

DIAGRAM OF CORNER:

N.

= Corner recorded on the sheet

Montana 534 ES
Registration Number

Office of Clerk and Recorder, County of Lincoln

This "corner record" was filed for record on the 24th. day of February 1970, was noted on the cross-index plat and is assigned page No. 172, in book No. 1

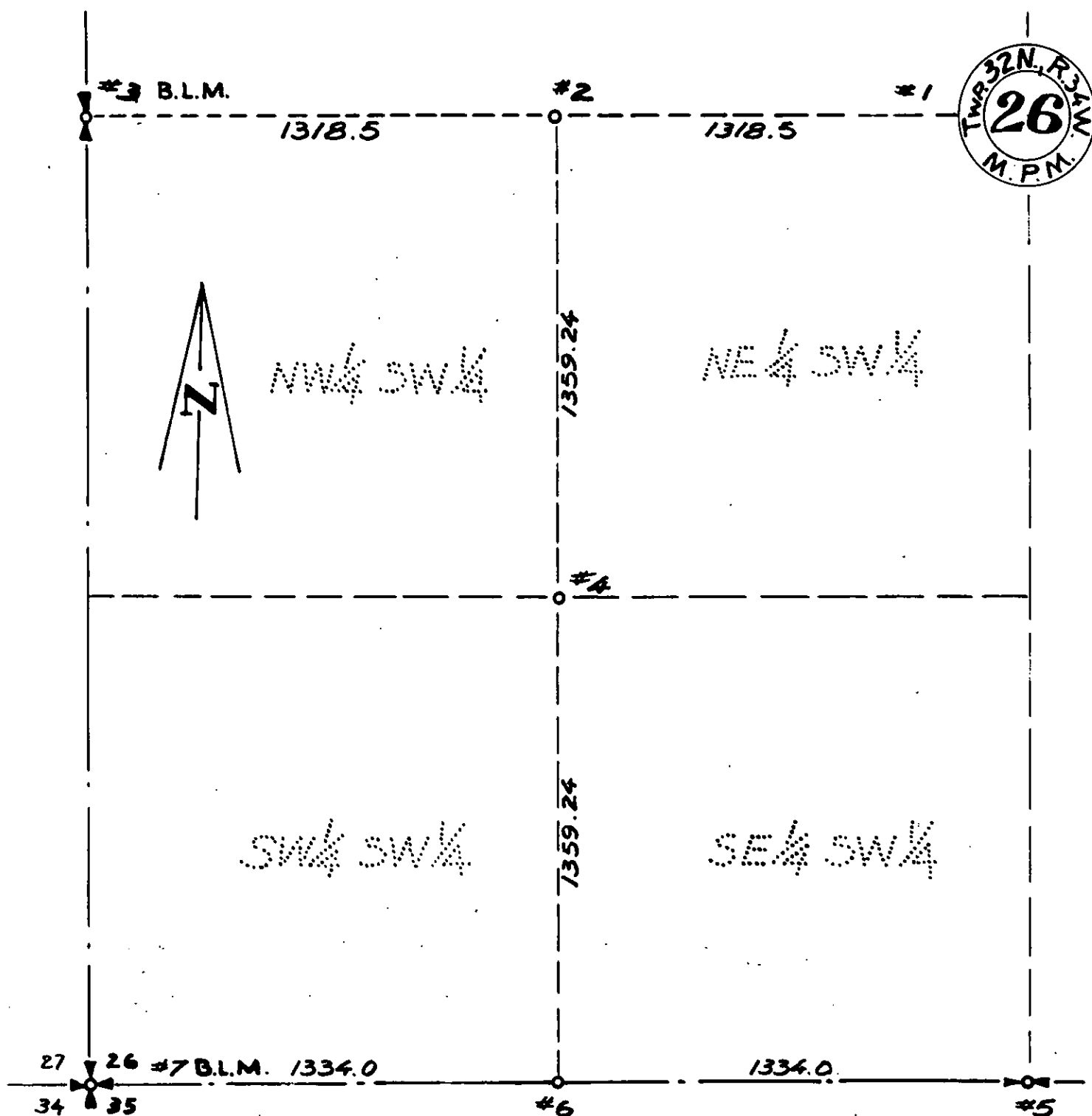
ELEANOR L. VAUGHN, By *Mae Watson*
County Official Deputy.

Cor. # 1 Standard Brass Cap set by others

Cor. # 2 Set a Steel Pin from which a 12" Fir Bears S 10° W 38.3 Ft. Scribed 1/16 BT
Posted. An 8" Larch Bears N 9° E 17.0 Ft. Scribed 1/16 Posted

Cor. # 3 Standard Brass Cap by BLM

Cor. # 4 Set Out Nail in Rock Outcrop from which a 10" Fir Bears N 18° E 20.1 Ft Scribed
1/16 Bt. Posted. A 10" Fir Bears N 31° W 40.9 Ft. Scribed 1/16 Bt Posted



Cor. # 5 Replaced a post set by others with a Pipe from which a 24" Fir Bears
S 45° W 62.4 Ft. Scribed S $26\frac{1}{2}^{\circ}$ Posted. A 14" Fir Bears N 65° W 20.3 Ft. Scribed
 $\frac{1}{16}$ Posted

Cor. # 6 Set Brass Cap from which a 12" Pine Bears N 73° E 19.2 Ft. Scribed 1/16 BT
Posted. A 12" Larch Bears S 33° E 17.5 Ft. Scribed 1/16 Bt. Posted.

Cor. # 7 Standard Brass Cap Monument by BLM