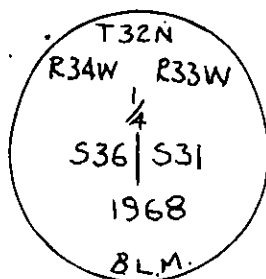


1. Original and/or sub. record used to evaluate the corner position.
2. Description of evidence found, note discrepancies in the record, state method of establishing lost or obliterated corners.
3. Description of monument and accessories set to perpetuate the corner position.
4. Sketch or corner, show all pertinent data which can best be shown in a sketch example, corner marking, topography ties, position of accessories, etc.
5. Certification must be signed and sealed by Registered Land Surveyor in State of Montana.
6. Fill in Cross Index & Section Diagram at bottom of sheet.

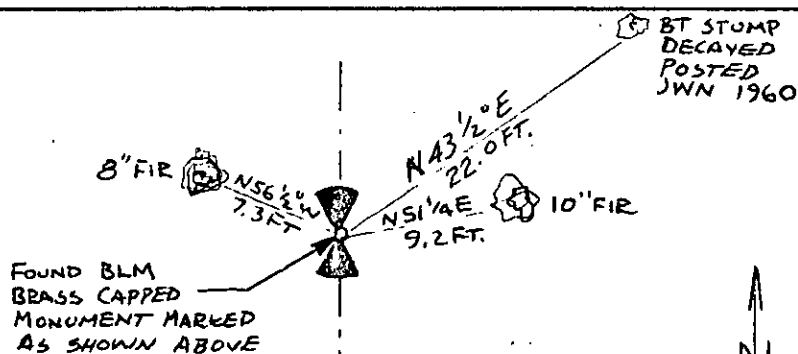
## CERTIFIED CORNER RECORDATION

Corner East 1/4 Corner Section 36 T. 32N R. 34W P.M.M. Lincoln County

1. Original record not available.
2. Found a standard B.L.M. brass capped monument from which an original B.T. stump bears  $N43\frac{1}{2}^{\circ}E$  22.0 feet posted by JWN 1960. A 10" Fir bears  $N51\frac{1}{4}^{\circ}$  9.2 feet scribe overgrown posted by ART 1968. An 8" Fir bears  $N56\frac{1}{2}^{\circ}W$  7.3 feet scribed T32N., R.34W S36B.T. and posted by ART in 1968.



Found BLM brass cap marked as shown.



SKETCH OF CORNER

### CERTIFICATION

I, David Stanley  
certify the information shown herein is true and correct.

David Stanley  
Signature of Ground Party Chief

I, Jack H. Ninneman  
certify that this Corner Record correctly represents work performed by me or under my direction in compliance with the "Corner Recordation Act" (70-22-101, et seq., M.D.A.)

Jack H. Ninneman  
Signature of Surveyor & Seal

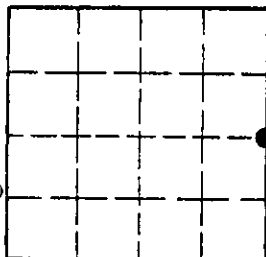
Date: 12/22/81 Reg. No. 4661S

Employer: Ninneman Engineering Inc.

Office of Clerk and Recorder, County of Lincoln. This "corner record" was filed for record on the January 18<sup>th</sup> day of 1982 was noted on the cross-index plat and is assigned page No. 1492, in book No. 1.

Eleanor L. Vaughn by Betty L. Conner  
County Official deputy

Sec. 36



Cross Index No. \_\_\_\_\_ T. 32N R. 34W P.M.M.

• - corner this sheet