

CORAL M. CUMMINGS CLERK AND RECORDER

FEE: 80.00

BY:

Corner CSSE 1/64 S24 T. 32 N. R. 34 W. P.M.M. LINCOLN County

II. Found: No evidence found.

A cedar, 7 ins. diam., bears N.76°E., 8.80 ft. dist., scribed CSSE 1/64 S24 BT.

A fir, 10 ins. diam., bears S.13°W., 11.40 ft. dist., scribed CSSE 1/64 S24 BT.

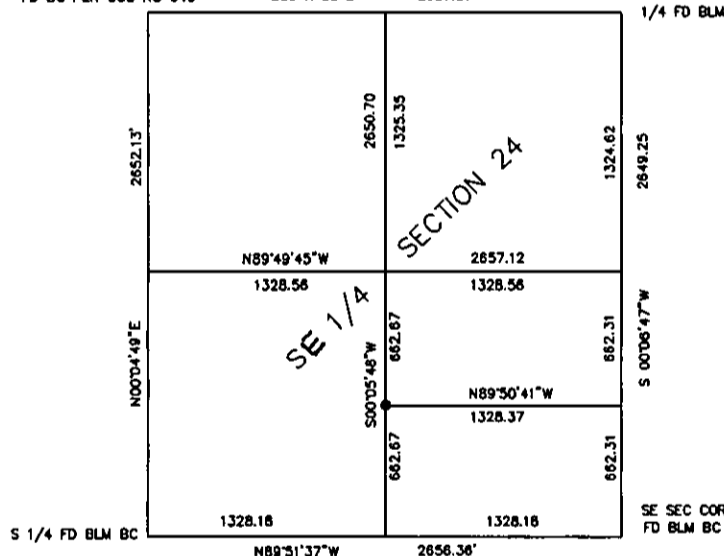
Magnetic declination: 18° East assumed

C 1/4 COR
FD AC PER COS NO 640

S89°47'53"E

2657.A71

1/4 FD BLM BC



HUGHES
7322-LS

Kootenai Surveyors Inc., 314 California Av., Libby, MT. 59923 (406) 293-4354

CSSE 1/64 COR.

SKETCH OF CORNER

CERTIFICATION

Pete Landis

I, John E. Smith
certify the information shown herein is true and correct.

Signature Ground Party Chief

Alvah F. Hughes

certify that this Corner Record correctly represents work performed by me or under my direction in compliance with the "Corner Recordation Act" (70-22-101, et seq., M.C.A.)

Signature of Surveyor & Seal

Date: 06/17/2004 Reg. No. 7322-LS

Employer: Kootenai Surveyors Inc.

Office of Clerk and Recorder, County of Lincoln. This "corner

record" was filed for record

181335 BOOK: CCR CC&R'S PAGE: 10731 Pages: 1

STATE OF MONTANA LINCOLN COUNTY

was noted on the cross-
RECORDED: 12/17/2004 8:44 KOI: CCR'S

book No. CORAL M. CUMMINGS CLERK AND RECORDER

FEE: \$0.00

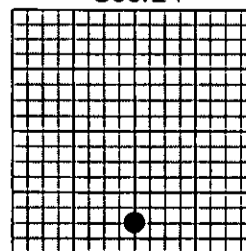
BY

TO: FILED

Cross Index No. R23 T. 32N. R. 34W. P.M., MT

Adopted July 1, 1981, Montana Board of Professional Engineers & Land Surveyors

Sec.24



- corner this sheet