

CERTIFIED CORNER RECORDATION

Corner SS 1/64 S24 T 32 N. R. 34 W. P.M.M. LINCOLN County

I. Record: No, previous record.

II. Found: No evidence found.

III. Perpetuation: At the calculated position determined by a partial section break down survey, set a 5/8 in. diam. rebar 24 ins. long 22 ins. in the ground, with a 1 1/4 in. diam. red P.V.C cap mkd. HUGHES 7322-S from which:

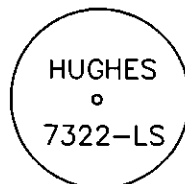
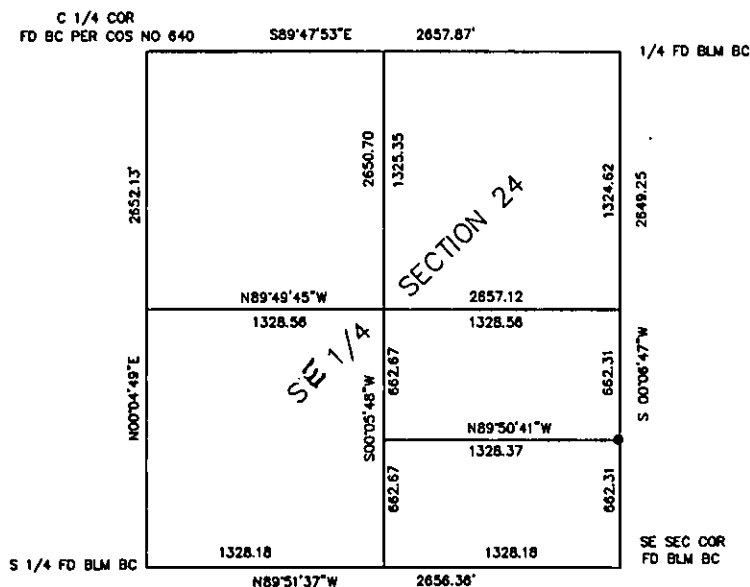
A cedar, 10 ins. diam., bears S.8°E., 16.20 ft. dist., scribed SS 1/64 S19 BT.

A fir, 12 ins. diam., bears S.63°W., 23.70 ft. dist., scribed SS 1/64 S24 BT.

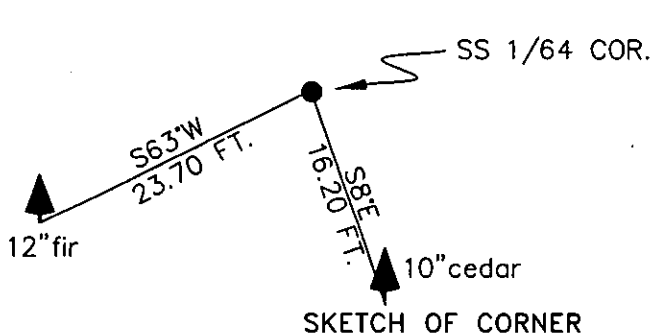
Painted faces and 6 in. wide red bands to all bearing trees and attached Land Survey Monument and Bearing Tree signs.

Magnetic declination: 18° East assumed

Equipment used: Total station, Hand compass and loggers tape



Kootenai Surveyors Inc., 314 California Av., Libby, MT. 59923 (406) 293-4354



SKETCH OF CORNER

CERTIFICATION

I, Pete Landis
certify the information shown herein is true and correct.
Pete Landis
Signature Ground Party Chief

I, Alvah F. Hughes
certify that this Corner Record correctly represents work performed by me or under my direction in compliance with the "Corner Recordation Act" (70-22-101, et seq., M.C.A.)
Alvah F. Hughes, 7322LS
Signature of Surveyor & Seal

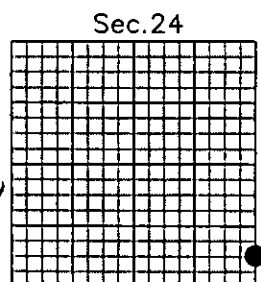
Date: 06/17/2004 Reg. No. 7322-LS

Employer: Kootenai Surveyors Inc.

Office of Clerk and Recorder, County of Lincoln This "corner record" was filed for record
was noted on the cross-book No. _____

Cross Index No. R25 T. 32 N. R. 34 W. P.M., MT

Adopted July 1, 1981, Montana Board of Professional Engineers & Land Surveyors



• corner this sheet