

CERTIFIED CORNER RECORDATION

Corner: NW 1/16 Sec. 26, Twp. 32 N., R. 34 W., P.M.M.

Lincoln County

Record :

NONE

Found Evidence :

Two approximate location tags. No monument was located.

Perpetuation :

Set a 5/8 inch dia. rebar 24 inches long, 20 inches in the ground with a 3 1/4 inch aluminum cap stamped: Davis Surveying, Inc. (See diagram below).

From which: I established the following two new bearing trees:

A 13 1/2 inch DBH Douglas fir scribed NW 1/16 S 26 BT Bears N 3 E 27.85 ft. dist.

A 9 inch DBH Douglas fir scribed NW 1/16 S 26 BT Bears S 79° W 3.25 feet distance.

Painted 6 inch wide bands and attached warning tags and bearing tree signs to both trees.

Declination 18° E

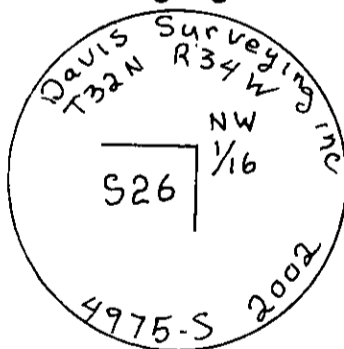
13 1/2 inch DBH Douglas fir

N 03 E 27.85

S 79° W 3.25
9 inch DBH Douglas fir

Sketch of Corner

N
NW 1/16 S 26 BT
NW 1/16 S 26 BT



CERTIFICATION

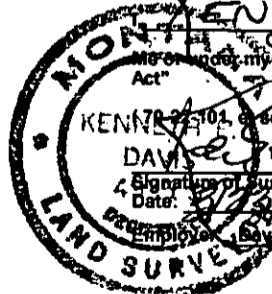
I, George Clark

certify the information shown herein is true and correct

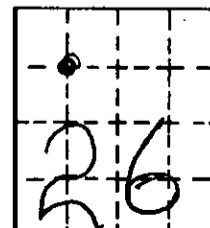
Signature of Ground Party Chief

KENNETH E. DAVIS

Certify that this Corner Record correctly represents the location of the corner in compliance with the "Corner Record Act"



Section



Office of Clerk and Recorder, County of Lincoln

This "corner record" was filed for record on 3/24/2002 10561

was noted on the cross-index plat and is assigned page No.

In book No.

County Official

Cross Index No. NW 1/16 S 26 Twp. 32 N., R. 34 W., P.M.M.

• THIS CORNER