

CERTIFIED CORNER RECORDATION

Corner: N 1/16 Sec. 26, Twp. 32 N., R. 34 W., P.M.M.

Lincoln County

Record :

NONE

Found Evidence :

Two approximate location tags. No monument was located.

Perpetuation :

Set a 5/8 inch dia. rebar 24 inches long, 20 inches in the ground with a 3 1/4 inch aluminum cap stamped: Davis Surveying, Inc. (See diagram below).

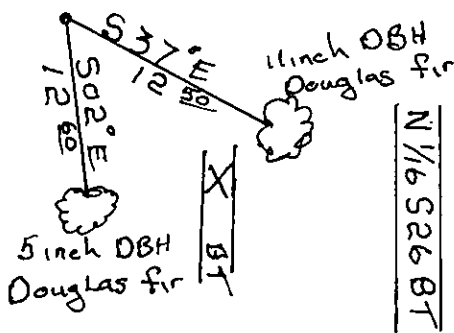
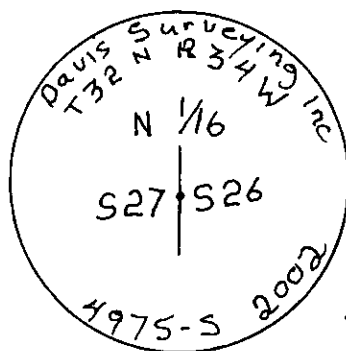
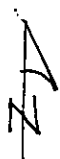
From which: I established the following two new bearing trees:

A 11inch DBH Douglas fir scribed N 1/16 S 26 BT Bears S 37 E 12.50 ft. dist.

A 5 inch DBH Douglas fir scribed X BT Bears S 2° E 12.60 feet distance.

Painted 6 inch wide bands and attached warning tags and bearing tree signs to both trees.

Declination 18 °E



Sketch of Corner

CERTIFICATION

I, George Clark
certify the information shown herein is true and correct

Signature of Ground Party Chief

KENNETH E. DAVIS

Certify that this Corner Record correctly represents the corner in compliance with the "Corner Record"



Office of Clerk and Recorder, County of Lincoln

This "corner record" was filed for record on 3/26/2002
was noted on the cross-index plat and is assigned page No. 10560

In book No. _____
County Official _____

Cross Index No. N 1/16 S 26 Twp. 32 N., R. 34 W., P.M.M.

• THIS CORNER

