

## INSTRUCTIONS

1. Original and/or subsequent record used to evaluate the corner position.
2. Description of evidence found, not discrepancies in the record, state method of establishing lost or obliterated corners.
3. Description of monument and accessories set to perpetuate the corner position.
4. Sketch of corner, show all pertinent data which can best be shown in a sketch example, corner marking, topography ties, position of accessories, etc.
5. Certification must be signed and sealed by Land Surveyor registered in the State of Montana.
6. Fill in Cross Index & Section Diagram at bottom of sheet.

## CERTIFIED CORNER RECORDATION

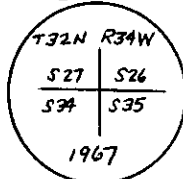
Corner of Sections 26, 27, 34, & 35 T. 32 N., R. 34 W., P.M.M. Lincoln County

## RECORD:

1903 GLO Original record by A.B. Benedict: Set a limestone and four bearing trees.

1968 BLM Remonumentation Record by W.E. Damm et. al: The corner of sections 26, 27, 34, and 35, monumented with a limestone, 18"x12"x5", firmly set, illegibly marked and witnessed by the remains of the original bearing trees.

At the corner point, set an iron post, 30" long, 2½" diameter, 24" in the ground, with brass cap marked:



From which:

The original bearing trees:

A Tamarack stump, 24" diameter, bears S56°E, 37 links distant, marked T32N R34W S35 BT.  
(Record: S60°E, 37 links)

A Fir stump, 15" diameter, bears N76¼°W, 51 links distant, marked T32N R34W S27 BT.  
(Record)

The new bearing trees:

A Pine, 8" diameter, bears N14¼°E, 83 links distant, marked T32N R34W S26 BT.

A Fir, 9" diameter, bears S33°E, 49 links distant, marked T32N R34W S35 BT.

A Pine, 10" diameter, bears S38½°W, 44 links distant, marked T32N R34W S34 BT.

A Pine, 10" diameter, bears N59°W, 53 links distant, marked T32N R34W S27 BT.

## FOUND:

Found 3½" diameter BLM brass cap, marked as shown above, set in concrete at base of steel corner fence post. From which:

The original Tamarack stump position falls in a private access road (Record S60°E, 37 links).

A Fir stump, 15" diameter, bears N68°W, 33.66' distant, marked T32N R34W S27 BT.  
(Record: N76¼°W, 51 links)

A Pine, 12" diameter, bears N14°E, 54.3' distant, marked T32N R34W S26 BT.

(Record: N14¼°E, 83 links) BT tag and location poster by KED 4975S 10/15/93.

A Fir, 9" diameter, now fallen and rotting, visible scribed face, moved southerly out of position.

A Pine, 14" diameter, bears S38°W, 28.9' distant, marked T32N R34W S34 BT.

(Record: S38½°W, 44 links) BT tag and ATTENTION sign by KED 4975S 10/15/93.

A Pine, 14" diameter, blown over easterly from record position onto face with orange paint  
(Root wad generally fits Record: N59°W, 53 links)

## PERPETUATION:

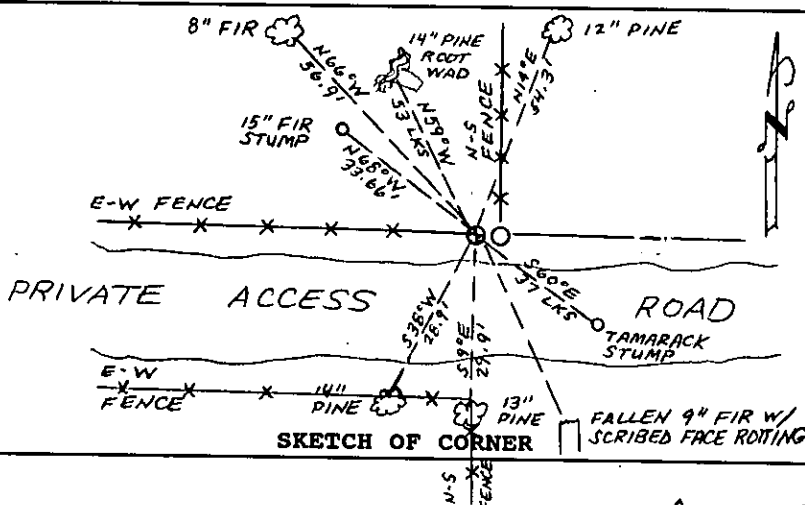
Established two new bearing trees:

A Pine, 13" diameter, bears S 9°E, 29.9' distant, marked T32N R34W S35 BT.

Land Survey Monument sign already on tree.

A Fir, 8" diameter, bears N66°W, 56.9' distant, marked T32N R34W S27 BT.

Painted red bands around the two new bearing trees and attached Bearing Tree signs to them.



## CERTIFICATION

I, Kevin Todd

certify the information shown herein is true and correct.

*Kevin Todd*  
Signature Ground Party Chief

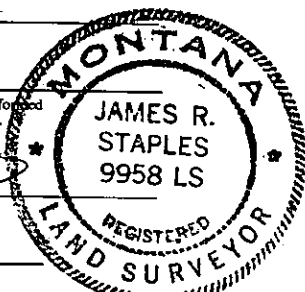
I, James R. Staples

certify that this corner Record correctly represents work performed by me or under my direction in compliance with the "Corner Recordation Act" (70-22-101, et seq., M.C.A.)

*James R. Staples*  
Signature of Surveyor & Seal

Date: 1-27-00 Reg. No. 9958

Employer: J.R.S. Surveying, Inc.



Sec. 27

Office of Clerk and Recorder, County of Lincoln. This "corner record" was filed for record on Apr 7, 2000

was noted on the cross-index plat and is assigned page No. 10437

book No. Coral M. Cummings By dep  
County Official

Cross Index No. V17 T. 32N R. 34W PMM

Adopted July 1, 1981, Montana Board of Professional Engineers & Land Surveyors

