

# CERTIFIED CORNER RECORDATION

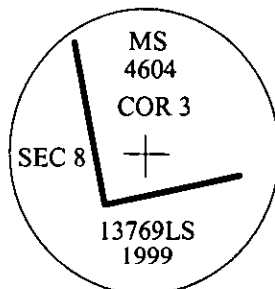
Corner MS 4604 Sec. 8 T. 32N. R. 34W. P.M., MT Lincoln County  
Star Creek  
Placer  
Corner No. 3

I. 1895 Original Mineral Survey Record by Abram L. Jaqueth: " S.W. Location cor. set a post 4 1/2 ins. square 2 ft. deep, marked 3-4604 for Cor. No. 3.

A blazed fir tree 14 ins. in diam., marked B.T. 3-4604, bears N62°40'E, 23 ft.  
A blazed fir tree 13 ins. in diam., marked B.T. 3-4604, bears S56°55'W, 13 ft".

II. No evidence found of original wood post and bearing trees.

III. Set by survey a 2 1/2 ins. diam., by 30 ins. long aluminum pipe 22 ins. in the ground with a 3 1/4 ins. diam. aluminum cap marked as shown, with an "X" for the exact corner point. Raise a collar of stone.



Established two bearing trees:

A fir, 10 ins. diam., bears S13°W, 22.5 ft. dist., scribed "3 MS 4604 BT".  
A fir, 11 ins. diam., bears S78°W, 20.5 ft. dist., scribed "3 MS 4604 BT".

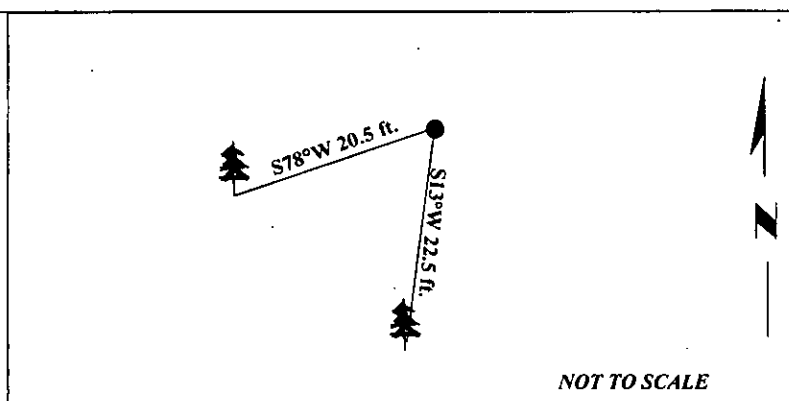
Bearing tree faces and blazes painted red, with bearing tree tags and Land Survey Monument signs attached, and distance measured to side center of tree.

Field work done on 9/16/99. Equipment used, Silva RANGER hand compass and a Loggers tape.

Kootenai National Forest, 1101 U.S. Hwy. 2 West., Libby, Mt. 59923 (406) 293-6211

Survey Crew; Steve Boyer, Tom Hommel, Rex Rice and Vince Huntsberger.

Magnetic Declination: 20° East



SKETCH OF CORNER

CERTIFICATION

I, Steven A. Boyer certify the information shown herein is true and correct.

I, Roger O. Green certify that this Corner Record correctly represents work performed by me or under my direction in compliance with the "Corner Registration Act" (M.C.A. 82-101, 82-102, 82-103, 82-104, 82-105, 82-106, 82-107, 82-108, 82-109, 82-110, 82-111, 82-112, 82-113, 82-114, 82-115, 82-116, 82-117, 82-118, 82-119, 82-120, 82-121, 82-122, 82-123, 82-124, 82-125, 82-126, 82-127, 82-128, 82-129, 82-130, 82-131, 82-132, 82-133, 82-134, 82-135, 82-136, 82-137, 82-138, 82-139, 82-140, 82-141, 82-142, 82-143, 82-144, 82-145, 82-146, 82-147, 82-148, 82-149, 82-150, 82-151, 82-152, 82-153, 82-154, 82-155, 82-156, 82-157, 82-158, 82-159, 82-160, 82-161, 82-162, 82-163, 82-164, 82-165, 82-166, 82-167, 82-168, 82-169, 82-170, 82-171, 82-172, 82-173, 82-174, 82-175, 82-176, 82-177, 82-178, 82-179, 82-180, 82-181, 82-182, 82-183, 82-184, 82-185, 82-186, 82-187, 82-188, 82-189, 82-190, 82-191, 82-192, 82-193, 82-194, 82-195, 82-196, 82-197, 82-198, 82-199, 82-200, 82-201, 82-202, 82-203, 82-204, 82-205, 82-206, 82-207, 82-208, 82-209, 82-210, 82-211, 82-212, 82-213, 82-214, 82-215, 82-216, 82-217, 82-218, 82-219, 82-220, 82-221, 82-222, 82-223, 82-224, 82-225, 82-226, 82-227, 82-228, 82-229, 82-230, 82-231, 82-232, 82-233, 82-234, 82-235, 82-236, 82-237, 82-238, 82-239, 82-240, 82-241, 82-242, 82-243, 82-244, 82-245, 82-246, 82-247, 82-248, 82-249, 82-250, 82-251, 82-252, 82-253, 82-254, 82-255, 82-256, 82-257, 82-258, 82-259, 82-260, 82-261, 82-262, 82-263, 82-264, 82-265, 82-266, 82-267, 82-268, 82-269, 82-270, 82-271, 82-272, 82-273, 82-274, 82-275, 82-276, 82-277, 82-278, 82-279, 82-280, 82-281, 82-282, 82-283, 82-284, 82-285, 82-286, 82-287, 82-288, 82-289, 82-290, 82-291, 82-292, 82-293, 82-294, 82-295, 82-296, 82-297, 82-298, 82-299, 82-300, 82-301, 82-302, 82-303, 82-304, 82-305, 82-306, 82-307, 82-308, 82-309, 82-310, 82-311, 82-312, 82-313, 82-314, 82-315, 82-316, 82-317, 82-318, 82-319, 82-320, 82-321, 82-322, 82-323, 82-324, 82-325, 82-326, 82-327, 82-328, 82-329, 82-330, 82-331, 82-332, 82-333, 82-334, 82-335, 82-336, 82-337, 82-338, 82-339, 82-340, 82-341, 82-342, 82-343, 82-344, 82-345, 82-346, 82-347, 82-348, 82-349, 82-350, 82-351, 82-352, 82-353, 82-354, 82-355, 82-356, 82-357, 82-358, 82-359, 82-360, 82-361, 82-362, 82-363, 82-364, 82-365, 82-366, 82-367, 82-368, 82-369, 82-370, 82-371, 82-372, 82-373, 82-374, 82-375, 82-376, 82-377, 82-378, 82-379, 82-380, 82-381, 82-382, 82-383, 82-384, 82-385, 82-386, 82-387, 82-388, 82-389, 82-390, 82-391, 82-392, 82-393, 82-394, 82-395, 82-396, 82-397, 82-398, 82-399, 82-400, 82-401, 82-402, 82-403, 82-404, 82-405, 82-406, 82-407, 82-408, 82-409, 82-410, 82-411, 82-412, 82-413, 82-414, 82-415, 82-416, 82-417, 82-418, 82-419, 82-420, 82-421, 82-422, 82-423, 82-424, 82-425, 82-426, 82-427, 82-428, 82-429, 82-430, 82-431, 82-432, 82-433, 82-434, 82-435, 82-436, 82-437, 82-438, 82-439, 82-440, 82-441, 82-442, 82-443, 82-444, 82-445, 82-446, 82-447, 82-448, 82-449, 82-450, 82-451, 82-452, 82-453, 82-454, 82-455, 82-456, 82-457, 82-458, 82-459, 82-460, 82-461, 82-462, 82-463, 82-464, 82-465, 82-466, 82-467, 82-468, 82-469, 82-470, 82-471, 82-472, 82-473, 82-474, 82-475, 82-476, 82-477, 82-478, 82-479, 82-480, 82-481, 82-482, 82-483, 82-484, 82-485, 82-486, 82-487, 82-488, 82-489, 82-490, 82-491, 82-492, 82-493, 82-494, 82-495, 82-496, 82-497, 82-498, 82-499, 82-500, 82-501, 82-502, 82-503, 82-504, 82-505, 82-506, 82-507, 82-508, 82-509, 82-510, 82-511, 82-512, 82-513, 82-514, 82-515, 82-516, 82-517, 82-518, 82-519, 82-520, 82-521, 82-522, 82-523, 82-524, 82-525, 82-526, 82-527, 82-528, 82-529, 82-530, 82-531, 82-532, 82-533, 82-534, 82-535, 82-536, 82-537, 82-538, 82-539, 82-540, 82-541, 82-542, 82-543, 82-544, 82-545, 82-546, 82-547, 82-548, 82-549, 82-550, 82-551, 82-552, 82-553, 82-554, 82-555, 82-556, 82-557, 82-558, 82-559, 82-560, 82-561, 82-562, 82-563, 82-564, 82-565, 82-566, 82-567, 82-568, 82-569, 82-570, 82-571, 82-572, 82-573, 82-574, 82-575, 82-576, 82-577, 82-578, 82-579, 82-580, 82-581, 82-582, 82-583, 82-584, 82-585, 82-586, 82-587, 82-588, 82-589, 82-590, 82-591, 82-592, 82-593, 82-594, 82-595, 82-596, 82-597, 82-598, 82-599, 82-600, 82-601, 82-602, 82-603, 82-604, 82-605, 82-606, 82-607, 82-608, 82-609, 82-610, 82-611, 82-612, 82-613, 82-614, 82-615, 82-616, 82-617, 82-618, 82-619, 82-620, 82-621, 82-622, 82-623, 82-624, 82-625, 82-626, 82-627, 82-628, 82-629, 82-630, 82-631, 82-632, 82-633, 82-634, 82-635, 82-636, 82-637, 82-638, 82-639, 82-640, 82-641, 82-642, 82-643, 82-644, 82-645, 82-646, 82-647, 82-648, 82-649, 82-650, 82-651, 82-652, 82-653, 82-654, 82-655, 82-656, 82-657, 82-658, 82-659, 82-660, 82-661, 82-662, 82-663, 82-664, 82-665, 82-666, 82-667, 82-668, 82-669, 82-670, 82-671, 82-672, 82-673, 82-674, 82-675, 82-676, 82-677, 82-678, 82-679, 82-680, 82-681, 82-682, 82-683, 82-684, 82-685, 82-686, 82-687, 82-688, 82-689, 82-690, 82-691, 82-692, 82-693, 82-694, 82-695, 82-696, 82-697, 82-698, 82-699, 82-700, 82-701, 82-702, 82-703, 82-704, 82-705, 82-706, 82-707, 82-708, 82-709, 82-710, 82-711, 82-712, 82-713, 82-714, 82-715, 82-716, 82-717, 82-718, 82-719, 82-720, 82-721, 82-722, 82-723, 82-724, 82-725, 82-726, 82-727, 82-728, 82-729, 82-730, 82-731, 82-732, 82-733, 82-734, 82-735, 82-736, 82-737, 82-738, 82-739, 82-740, 82-741, 82-742, 82-743, 82-744, 82-745, 82-746, 82-747, 82-748, 82-749, 82-750, 82-751, 82-752, 82-753, 82-754, 82-755, 82-756, 82-757, 82-758, 82-759, 82-760, 82-761, 82-762, 82-763, 82-764, 82-765, 82-766, 82-767, 82-768, 82-769, 82-770, 82-771, 82-772, 82-773, 82-774, 82-775, 82-776, 82-777, 82-778, 82-779, 82-780, 82-781, 82-782, 82-783, 82-784, 82-785, 82-786, 82-787, 82-788, 82-789, 82-790, 82-791, 82-792, 82-793, 82-794, 82-795, 82-796, 82-797, 82-798, 82-799, 82-800, 82-801, 82-802, 82-803, 82-804, 82-805, 82-806, 82-807, 82-808, 82-809, 82-810, 82-811, 82-812, 82-813, 82-814, 82-815, 82-816, 82-817, 82-818, 82-819, 82-820, 82-821, 82-822, 82-823, 82-824, 82-825, 82-826, 82-827, 82-828, 82-829, 82-830, 82-831, 82-832, 82-833, 82-834, 82-835, 82-836, 82-837, 82-838, 82-839, 82-840, 82-841, 82-842, 82-843, 82-844, 82-845, 82-846, 82-847, 82-848, 82-849, 82-850, 82-851, 82-852, 82-853, 82-854, 82-855, 82-856, 82-857, 82-858, 82-859, 82-860, 82-861, 82-862, 82-863, 82-864, 82-865, 82-866, 82-867, 82-868, 82-869, 82-870, 82-871, 82-872, 82-873, 82-874, 82-875, 82-876, 82-877, 82-878, 82-879, 82-880, 82-881, 82-882, 82-883, 82-884, 82-885, 82-886, 82-887, 82-888, 82-889, 82-890, 82-891, 82-892, 82-893, 82-894, 82-895, 82-896, 82-897, 82-898, 82-899, 82-900, 82-901, 82-902, 82-903, 82-904, 82-905, 82-906, 82-907, 82-908, 82-909, 82-910, 82-911, 82-912, 82-913, 82-914, 82-915, 82-916, 82-917, 82-918, 82-919, 82-920, 82-921, 82-922, 82-923, 82-924, 82-925, 82-926, 82-927, 82-928, 82-929, 82-930, 82-931, 82-932, 82-933, 82-934, 82-935, 82-936, 82-937, 82-938, 82-939, 82-940, 82-941, 82-942, 82-943, 82-944, 82-945, 82-946, 82-947, 82-948, 82-949, 82-950, 82-951, 82-952, 82-953, 82-954, 82-955, 82-956, 82-957, 82-958, 82-959, 82-960, 82-961, 82-962, 82-963, 82-964, 82-965, 82-966, 82-967, 82-968, 82-969, 82-970, 82-971, 82-972, 82-973, 82-974, 82-975, 82-976, 82-977, 82-978, 82-979, 82-980, 82-981, 82-982, 82-983, 82-984, 82-985, 82-986, 82-987, 82-988, 82-989, 82-990, 82-991, 82-992, 82-993, 82-994, 82-995, 82-996, 82-997, 82-998, 82-999, 83-000, 83-001, 83-002, 83-003, 83-004, 83-005, 83-006, 83-007, 83-008, 83-009, 83-010, 83-011, 83-012, 83-013, 83-014, 83-015, 83-016, 83-017, 83-018, 83-019, 83-020, 83-021, 83-022, 83-023, 83-024, 83-025, 83-026, 83-027, 83-028, 83-029, 83-030, 83-031, 83-032, 83-033, 83-034, 83-035, 83-036, 83-037, 83-038, 83-039, 83-040, 83-041, 83-042, 83-043, 83-044, 83-045, 83-046, 83-047, 83-048, 83-049, 83-050, 83-051, 83-052, 83-053, 83-054, 83-055, 83-056, 83-057, 83-058, 83-059, 83-060, 83-061, 83-062, 83-063, 83-064, 83-065, 83-066, 83-067, 83-068, 83-069, 83-070, 83-071, 83-072, 83-073, 83-074, 83-075, 83-076, 83-077, 83-078, 83-079, 83-080, 83-081, 83-082, 83-083, 83-084, 83-085, 83-086, 83-087, 83-088, 83-089, 83-090, 83-091, 83-092, 83-093, 83-094, 83-095, 83-096, 83-097, 83-098, 83-099, 83-100, 83-101, 83-102, 83-103, 83-104, 83-105, 83-106, 83-107, 83-108, 83-109, 83-110, 83-111, 83-112, 83-113, 83-114, 83-115, 83-116, 83-117, 83-118, 83-119, 83-120, 83-121, 83-122, 83-123, 83-124, 83-125, 83-126, 83-127, 83-128, 83-129, 83-130, 83-131, 83-132, 83-133, 83-134, 83-135, 83-136, 83-137, 83-138, 83-139, 83-140, 83-141, 83-142, 83-143, 83-144, 83-145, 83-146, 83-147, 83-148, 83-149, 83-150, 83-151, 83-152, 83-153, 83-154, 83-155, 83-156, 83-157, 83-158, 83-159, 83-160, 83-161, 83-162, 83-163, 83-164, 83-165, 83-166, 83-167, 83-168, 83-169, 83-170, 83-171, 83-172, 83-173, 83-174, 83-175, 83-176, 83-177, 83-178, 83-179, 83-180, 83-181, 83-182, 83-183, 83-184, 83-185, 83-186, 83-187, 83-188, 83-189, 83-190, 83-191, 83-192, 83-193, 83-194, 83-195, 83-196, 83-197, 83-198, 83-199, 83-200, 83-201, 83-202, 83-203, 83-204, 83-205, 83-206, 83-207, 83-208, 83-209, 83-210, 83-211, 83-212, 83-213, 83-214, 83-215, 83-216, 83-217, 83-218, 83-219, 83-220, 83-221, 83-222, 83-223, 83-224, 83-225, 83-226, 83-227, 83-228, 83-229, 83-230, 83-231, 83-232, 83-233, 83-234, 83-235, 83-236, 83-237, 83-238, 83-239, 83-240, 83-241, 83-242, 83-243, 83-244, 83-245, 83-246, 83-247, 83-248, 83-249, 83-250, 83-251, 83-252, 83-253, 83-254, 83-255, 83-256, 83-257, 83-258, 83-259, 83-260, 83-261, 83-262, 83-263, 83-264, 83-265, 83-266, 83-267, 83-268, 83-269, 83-270, 83-271, 83-272, 83-273, 83-274, 83-275, 83-276, 83-277, 83-278, 83-279, 83-280, 83-281, 83-282, 83-283, 83-284, 83-285, 83-286, 83-287, 83-288, 83-289, 83-290, 83-291, 83-292, 83-293, 83-294, 83-295, 83-296, 83-297, 83-298, 83-299, 83-300, 83-301, 83-302, 83-303, 83-304, 83-305, 83-306, 83-307, 83-308, 83-309, 83-310, 83-311, 83-312, 83-313, 83-314, 83-315, 83-316, 83-317, 83-318, 83-319, 83-320, 83-321, 83-322, 83-323, 83-324, 83-325, 83-326, 83-327, 83-328, 83-329, 83-330, 83-331, 83-332, 83-333, 83-334, 83-335, 83-336, 83-337, 83-338, 83-339, 83-340, 83-341, 83-342, 83-343, 83-344, 83-345, 83-346, 83-347, 83-348, 83-349, 83-350, 83-351, 83-352, 83-353, 83-354, 83-355, 83-356, 83-357, 83-358, 83-359, 83-360, 83-361, 83-362, 83-363, 83-364, 83-365, 83-366, 83-367, 83-368, 83-369, 83-370, 83-371, 83-372, 83-373, 83-374, 83-375, 83-376, 83-377, 83-378, 83-379, 83-380, 83-381, 83-382, 83-383, 83-384, 83-385, 83-386, 83-387, 83-388, 83-389, 83-390, 83-391, 83-392, 83-393, 83-394, 83-395, 83-396, 83-397, 83-398, 83-399, 83-400, 83-401, 83-402, 83-403, 83-404, 83-405, 83-406, 83-407, 83-408, 83-409, 83-410, 83-411, 83-412, 83-413, 83-414, 83-415, 83-416, 83-417, 83-418, 83-419, 83-420, 83-421, 83-422, 83-423, 83-424, 83-425, 83-426, 83-427, 83-428, 83-429, 83-430, 83-431, 83-432, 83-433, 83-434, 83-435, 83-436, 83-437, 83-438, 83-439, 83-440, 83-441, 83-442, 83-443, 83-444, 83-445, 83-446, 83-447, 83-448, 83-449, 83-450, 83-451, 83-452, 83-453, 83-454, 83-455, 83-456, 83-457, 83-458, 83-459, 83-460, 83-461, 83-462, 83-463, 83-464, 83-465, 83-466, 83-467, 83-468, 83-469, 83-470, 83-471, 83-472, 83-473, 83-474, 83-475, 83-476, 83-477, 83-478, 83-479, 83-480, 83-481, 83-482, 83-483, 83-484, 83-485, 83-486, 83-487, 83-488