

CERTIFIED CORNER RECORDATION

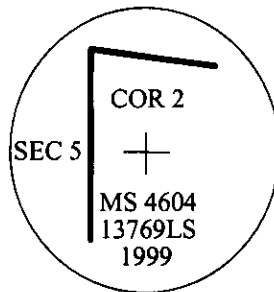
Corner MS 4604 Sec. 5 T. 32N., R. 34W., P.M., MT. Lincoln County
Star Creek
Placer
Corner No. 2

I. 1895 Original Mineral Survey Record by Abram L. Jaqueth: " N.W. location corner, set a post 4 1/2 ins. square 4 ft. long, 2 ft. deep, marked 2-4604 for cor. No. 2.

A blazed pine 6 ins. diam., marked B.T. 2-4604, bears N56°50'W, 12 ft.
A blazed fir 16 ins. in diam., marked 2-4604 B.T. bears S38°10'W, 11 ft".

II. No evidence found of original wood post and bearing trees.

III. Set by survey a 2 1/2 ins. diam., by 30 ins. long aluminum pipe 20 ins. in the ground with a 3 1/4 ins. diam. aluminum cap marked as shown, with an "X" for the exact corner point. Raise a collar of stone.



Established two bearing trees:

A fir, 14 ins. diam., bears N63°W, 14.3 ft. dist., scribed "2 MS 4604 BT".
A fir, 16 ins. diam., bears N17°W, 14.9 ft. dist., scribed "2 MS 4604 BT".

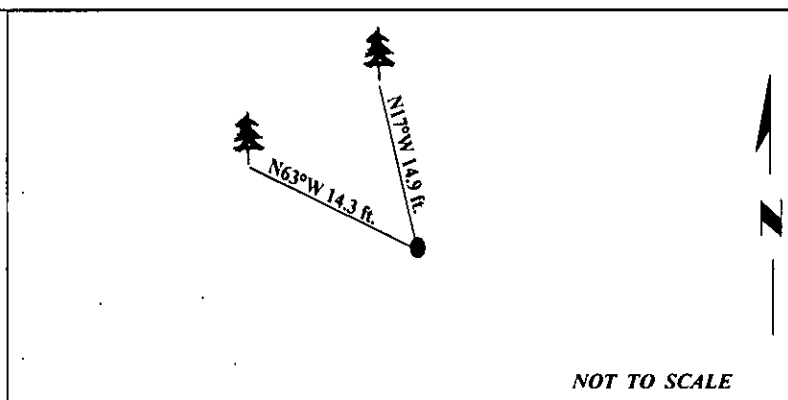
Bearing tree faces and blazes painted red, with bearing tree tags and Land Survey Monument signs attached, and distance measured to side center of tree.

Field work done on 9/15/99. Equipment used, Silva RANGER hand compass and Loggers tape.

Kootenai National Forest , 1101 U.S. Hwy 2 West., Libby, Mt. 59923 (406) 293-6211

Survey Crew; Steve Boyer, Tom Hommel, Rex Rice and Vince Huntsberger.

Magnetic Declination: 20° East



SKETCH OF CORNER

I, **Steven A. Boyer**

certify the information shown herein is true and correct.

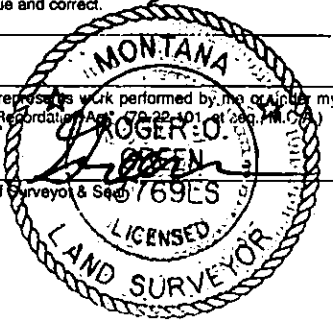
I, **Roger O. Green**

certify that this Corner Record correctly represents work performed by me or under my direction in compliance with the "Corner Recordation Act" (7-22-101, et seq., M.C.A.)

Date: **01/27/00**

Reg. No.: **13769LS**

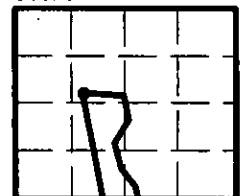
Employer: **U.S. FOREST SERVICE**



Office of Clerk and Recorder, County of Lincoln. This "corner record" was filed for record on 2/25/2000 and was noted on the cross-index plat and is assigned page No. 10410 in book No. .

Coral M. Cumming By DLR
County Official

Sec. 5



● - corner this sheet

Cross Index No. MS 4604 T. 32N., R. 34W., P.M., MT
Star Creek
Placer
Corner No. 2