

CERTIFIED CORNER RECORDATION

Corner CC Secs. 1&6 T. 32N R. 34W P.M., MT Lincoln County

- I. 1903 G.L.O. Record by Alan B. Benedict: Set an granite stone, 21x16x8 ins. 16 ins. in the ground, for closing corner of T32N R34&35W, mkd. "C.C." on S. with 6 grooves on S.E. and W. faces.

Established two bearing trees:

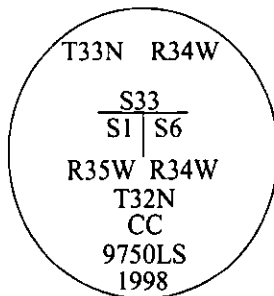
A hemlock, 14 ins. diam., bears S79°30'E, 12 lks. dist., mkd "T32N R34W S6 BT".
A hemlock, 12 ins. diam., bears S63°30'W, 21 lks. dist., mkd "T32N R35W S1 BT".

- II. Found stone, 16x8, protruding 8 ins. above the ground, mkd. "CC" on the S. face, 6 grooves on S., E., and W. faces.

from which:

A hemlock, 27 ins. diam., bears S80°E, 7.9 ft. dist., with a healed face.

- III. At the corner position of the found stone, set a 2 1/2 in. diam. aluminum pipe, 30 ins. long, 24 ins. in the ground, with a 3 1/4 in. diam. aluminum cap, mkd. as shown.



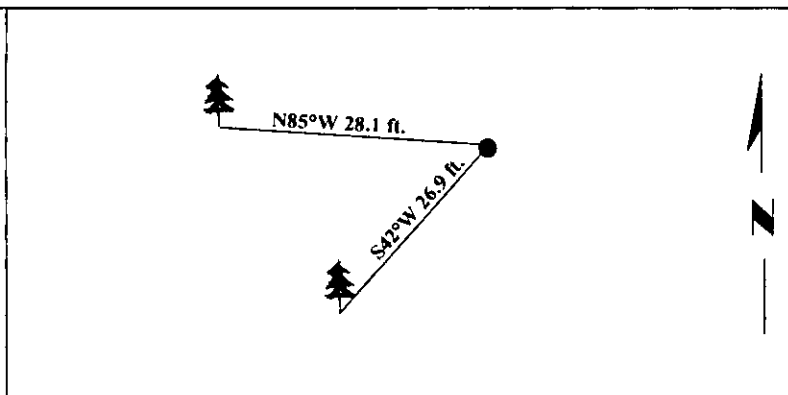
Established one new bearing tree:

A larch, 6 ins. diam., bears S68°W, 43.6 ft. dist., mkd. "T32N R35W S1 CC BT".

Buried original stone alongside the monument.

Painted bearing trees and attached Land Survey Monument and Bearing Tree signs.

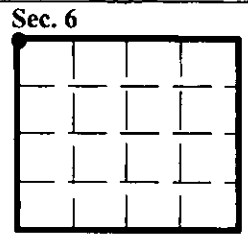
Magnetic Declination: 20° East



SKETCH OF CORNER

CERTIFICATION	
I. <u>Thomas M. Hommel</u>	certify the information shown herein is true and correct.
<u>Steven A. Boyer</u>	certify that this Corner Record correctly represents work performed by me or under my direction in compliance with the "Corner Recordation Act" (76-22-101, et seq., M.C.A.)
<u>Steven A. Boyer</u>	Signature of Surveyor & Seal
Date: <u>6/15/98</u>	
Reg. No.: <u>9750LS</u>	
Employer: <u>U.S. FOREST SERVICE</u>	

Office of Clerk and Recorder, County of Lincoln. This "corner record" was filed for record on 8-19-98 and was noted on the cross-index plat and is assigned page No. 10182 in book No. .
Carol M. Cummings County Official



• - corner this sheet