

## INSTRUCTIONS

1. Original and/or subsequent record used to evaluate the corner position.
2. Description of evidence found, note discrepancies in the record, state method of establishing lost or obliterated corners.
3. Description of monument and accessories set to perpetuate the corner position.
4. Sketch of corner, show all pertinent data which can best be shown in a sketch example, corner marking, topography ties, position of accessories, etc.
5. Certification must be signed and sealed by Land Surveyor registered in the State of Montana.
6. Fill in Cross Index & Section Diagram at bottom of sheet.

## CERTIFIED CORNER RECORDATION

Corner N 1/16 of Sec. 31 T. 32 N. R. 33 W. P.M.M. Lincoln County

- I. 1981 Original Corner Recordation filed by J. W. NINNEMAN: Set by proportionate distance, a 5/8 in. x 24 in. rebar (capped with a plastic cap bearing registration no., shown below).

J.H.N.  
4661S

from which:

- A pine, 16 ins. diam., bears N80° 30'E, 35.2 ft. dist., mkd. N 1/16 S 1 B.T. & posted.  
A fir, 6 ins. diam., bears S37° W, 21.4 ft. dist., mkd. 1/16 S 36 B.T. & posted.  
A location poster on an 8 in. fir bears N18° 30'E, 19.7 ft. dist."

- II. Found a 5/8 in. rebar, with plastic cap, 14 ins. above ground, from which:

- A pine, 22 ins. diam., bears N80° E, 36.5 ft. dist., N 1/16 S 1 BT visible. (rec. 35.2 ft.)  
A fir, 8 ins. diam., bears S37° W, 22.5 ft. dist., visible marks. (rec. 21.4 ft.)

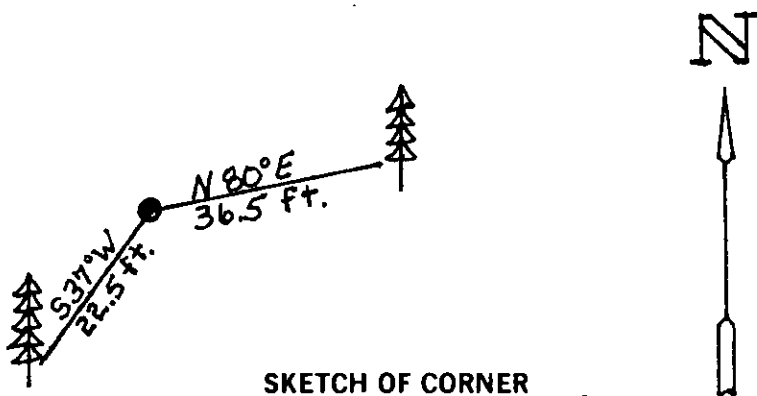
- III. At the position of the found rebar, set a 3 1/4 in. diam. U.S.D.A. Forest Service aluminum cap on the existing 5/8 in. rebar. Cap is marked as shown below:

T32N  
R34W R33W  
N 1/16  
S36 | S31  
7322LS  
1993

Painted a red band around bearing trees and attached Land Survey Monument and Bearing Tree signs.

Set a 6 ft. galvanized steel guard post with Land Survey Marker and Property Boundary decals, SOUTH, 4 ft.

Magnetic Declination: 20° East.



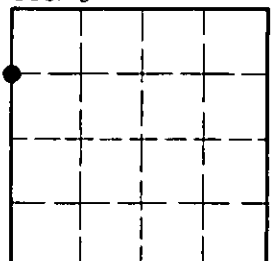
SKETCH OF CORNER

## CERTIFICATION

I, Thomas M. Hommel  
certify the information shown herein is true and correct.  
Thomas M. Hommel  
Signature Ground Party Chief  
I, Alvah F. Hughes  
certify that this Corner Record correctly represents work performed by me or under my direction in compliance with the "Corner Recordation Act" (70-22-101, et seq., M.C.A.)  
Alvah F. Hughes  
Signature of Surveyor & Seal  
Date: 12/16/93 Reg. No. 7322LS  
Employer: U.S. FOREST SERVICE

Office of Clerk and Recorder, County of Lincoln. This "corner record" was filed for record on Jan 12, 1994 was noted on the cross-index plat and is assigned page No. 6097, in book No. Coral M. Cummings  
County Official

Sec. 31



• corner this sheet

Cross Index No. W-1 T. 32 N R. 33 W PMM