

## INSTRUCTIONS

1. Original and/or subsequent record used to evaluate the corner position.
2. Description of evidence found, note discrepancies in the record, state method of establishing lost or obliterated corners.
3. Description of monument and accessories set to perpetuate the corner position.
4. Sketch of corner, show all pertinent data which can best be shown in a sketch example, corner marking, topography ties, position of accessories, etc.
5. Certification must be signed and sealed by Land Surveyor registered in the State of Montana.
6. Fill in Cross Index & Section Diagram at bottom of sheet.

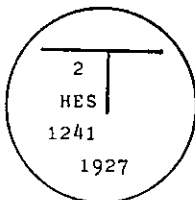
## CERTIFIED CORNER RECORDATION

Corner 2 of HES 1241 T. 32 N. R. 33 W. P.M.M. Lincoln County

- I. 1927 HES 1241 record by Harold Townsend: "Place a small stone marked with a cross(x) under a iron post 2 ins. in diam., 36 ins. long, 24 ins. in the ground, with a brass cap marked 1927 2 HES 1241 and a point on top for the exact corner point, from which

A cross(x) on a cedar tree 18 ins. diam., bears S55°W, 21 lks.(13.86 ft.) dist.  
 A cross(x) on a cedar tree 7 ins. diam., bears N34°31'W, 12 lks.(7.92 ft.) dist.  
 Each blazed and scribed 2 HES 1241 BT."

- II. Found a 2 ins. diam. iron pipe 12 ins. out of the ground with brass cap mkd. as shown.



From which:

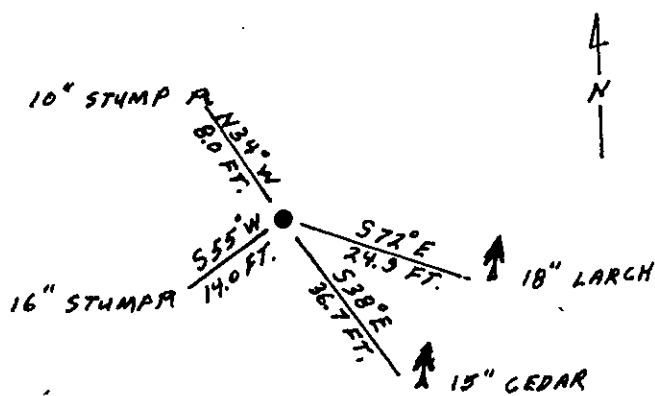
A burnt stump, 16 ins. diam., bears S55°W, 14.0 ft. dist., burnt face.  
 A burnt stump, 10 ins. diam., bears N34°W, 8.0 ft. dist.

- III. Established two new bearing trees:

A larch, 18 ins. diam., bears S72°E, 24.9 ft. dist., mkd. 2 HES 1241 BT.  
 A cedar, 15 ins. diam., bears S38°E, 36.7 ft. dist., mkd. 2 HES 1241 BT.

Painted red bands around the bearing trees and attached "Land Survey Monument" and "Bearing Tree" signs.  
 Set a galvanized steel gaurd post with "Land Survey Marker" and Property Boundary: decals. South, 3 ft.

Magnetic declination: 20° East



SKETCH OF CORNER

## CERTIFICATION

I, Kevin A. Todd  
 certify the information shown herein is true and correct.

Kevin A. Todd  
 Signature Ground Party Chief

I, Ronald A. Pearson  
 certify that this Corner Record correctly represents work performed  
 by me or under my direction in compliance with the "Corner  
 Recordation Act" (70-22-101, et seq., M.C.A.)

Ronald A. Pearson  
 Signature of Surveyor & Seal

Date: 11/16/92 Reg. No. 9008LS

Employer: U.S. FOREST SERVICE

Office of Clerk and Recorder, County of Lincoln. This "corner  
 record" was filed for record on 12-15-92  
 was noted on the cross-index plat and is assigned page No. 5190, in  
 book No. Coral M Cummings by BB

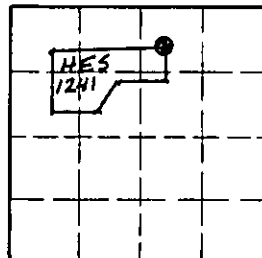
County Official

2 HES 1241

32 N 33W

Cross Index No. T. R. PMM

Sec. 8



• corner this sheet