

INSTRUCTIONS

1. Original and/or subsequent record used to evaluate the corner position.
2. Description of evidence found, note discrepancies in the record, state method of establishing lost or obliterated corners.
3. Description of monument and accessories set to perpetuate the corner position.
4. Sketch of corner, show all pertinent data which can best be shown in a sketch example, corner marking, topography ties, position of accessories, etc.
5. Certification must be signed and sealed by Land Surveyor registered in the State of Montana.
6. Fill in Cross Index & Section Diagram at bottom of sheet.

CERTIFIED CORNER RECORDATION

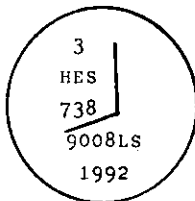
Corner 3 of HES 738 T. 32 N. R. 33 W. Lincoln County

- I. 1917 HES 738 record by E. R. Johnson: "Set a small stone, marked with a cross(x) under an iron post, 2 ins. diam., 36 ins. long, 24 ins. in the ground with a brass cap marked 1917 3 HES 738, the point on top for the exact corner point, from which

A cross(x) on a hemlock, 15 ins. diam., bears $S49^{\circ}15'E$, 52 lks. (34.32 ft.) dist.
 A cross(x) on a hemlock, 18 ins. diam., bears $N42^{\circ}15'W$, 17 lks. (11.22 ft.) dist.
 Each blazed and scribed 3 HES 738 BT."

II. Found no evidence of corner.

- III. At the position determined by Broken Boundary between corners 4 and 8 set a 2 1/2 ins. diam., 30 ins. long, alum. pipe 24 ins. in the ground with alum. cap mkd. as shown

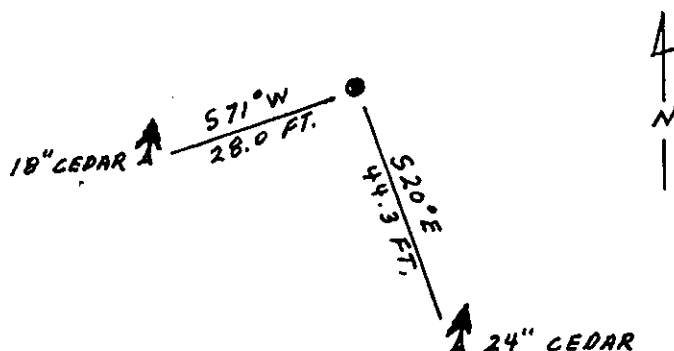
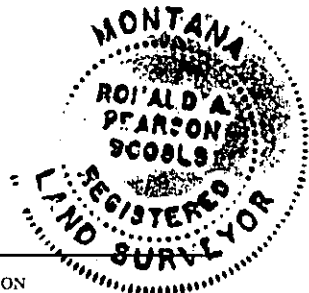
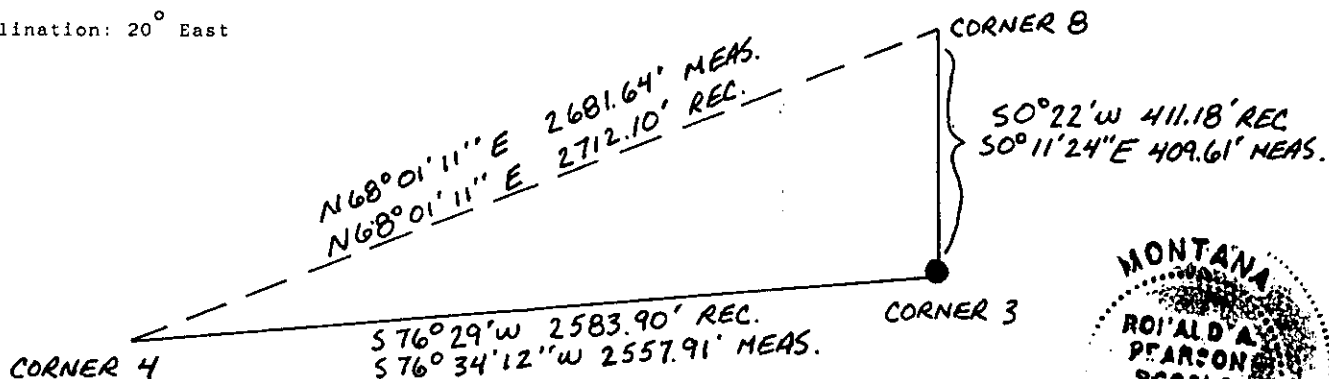


From which:

A cedar, 24 ins. diam., bears $S20^{\circ}E$, 44.3 ft. dist., mkd. 3 HES 738 BT.
 A cedar, 18 ins. diam., bears $S71^{\circ}W$, 28.0 ft. dist., mkd. 3 HES 738 BT.

Painted red bands around the bearing trees and attached "Land Survey Monument" and "Bearing Tree" signs.
 Set a galvanized steel gaurd post with "Land Survey Marker" and Property Boundary: decals, North, 3 ft.

Magnetic declination: 20° East



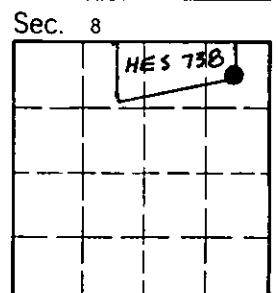
SKETCH OF CORNER

| CERTIFICATION | |
|-------------------------------|--|
| 1. Kevin A. Todd | certify the information shown herein is true and correct. |
| <i>Kevin A. Todd</i> | Signature Ground Party Chief |
| 1. Ronald A. Pearson | certify that this Corner Record correctly represents work performed by me or under my direction in compliance with the "Corner Recordation Act" (70-22-101, et seq., M.C.A.) |
| <i>Ronald A. Pearson</i> | Signature of Surveyor & Seal |
| Date: 11/16/92 | Reg. No. 9008LS |
| Employer: U.S. FOREST SERVICE | |

Office of Clerk and Recorder, County of Lincoln. This "corner record" was filed for record on 12-15-92 was noted on the cross-index plat and is assigned page No. 5186, in book No. Coral M Cummings by BB

County Official

3 HES 738 32 N 33W
 Cross Index No. T. R. PMM



• - corner this sheet