

## INSTRUCTIONS

1. Original and/or subsequent record used to evaluate the corner position.
2. Description of evidence found, note discrepancies in the record, state method of establishing lost or obliterated corners.
3. Description of monument and accessories set to perpetuate the corner position.
4. Sketch of corner, show all pertinent data which can best be shown in a sketch example, corner marking, topography ties, position of accessories, etc.
5. Certification must be signed and sealed by Land Surveyor registered in the State of Montana.
6. Fill in Cross Index & Section Diagram at bottom of sheet.

## CERTIFIED CORNER RECORDATION

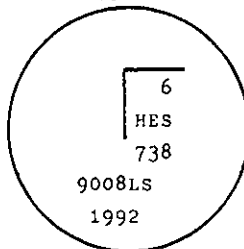
Corner 6 of HES 738 T. 32 N. R. 33 W. Lincoln County

- I. 1917 HES 738 record by E. R. Johnson: "Set a small stone, marked with a cross(x) under a sandstone, 28x12x4 ins., 18 ins. in the ground, marked 6 HES 738 on S face, and a cross(x) on top for the exact corner point, from which

A cross(x) on a pine, 9 ins. diam., bears N79°15'E, 16 lks. (10.56 ft.) dist.  
 A cross(x) on a pine, 9 ins. diam., bears S10°15'E, 26 lks. (17.16 ft.) dist.  
 Each blazed and scribed 6 HES 738 BT."

- II. Found no evidence of the corner.

- III. At a point along line 2-3 of HES 731 and record distance from corner 2, set a 3/4 ins. diam., 30 ins. long, alum. rod 8 ins. below the surface of road #752 with alum. cap mkd. as shown

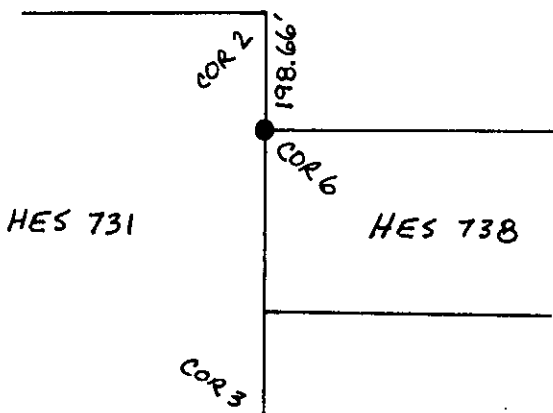


From which:

- A cottonwood, 11 ins. diam., bears S18°W, 16.9 ft. dist., mkd. 6 HES 738 BT.  
 A fir, 15 ins. diam., bears N76°W, 93.6 ft. dist., mkd. 6 HES 738 BT.

Painted red bands around the bearing trees and attached "Land Survey Monument" and "Bearing Tree" signs.

Magnetic declination: 20° East



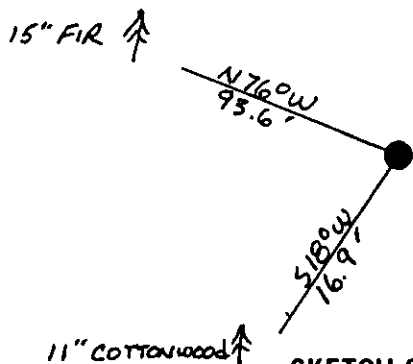
## CERTIFICATION

- I, Kevin A. Todd  
 certify the information shown herein is true and correct.

Kevin A. Todd  
 Signature Ground Party Chief

- I, Ronald A. Pearson  
 certify that this Corner Record correctly represents work performed by me or under my direction in compliance with the "Corner Recordation Act" (70-22-101, et seq., M.C.A.)

Ronald A. Pearson  
 Signature of Surveyor & Seal  
 Date: 11/16/92 Reg. No. 9008LS  
 Employer: U.S. FOREST SERVICE



SKETCH OF CORNER

Office of Clerk and Recorder, County of Lincoln. This "corner record" was filed for record on 12-15-92 was noted on the cross-index plat and is assigned page No. 5185, in book No. Coral M Cummings by BCB

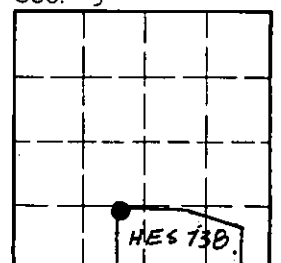
County Official

6 HES 738

32 N. 33W

Cross Index No. T. R. PMM

Sec. 5



• - corner this sheet