

## INSTRUCTIONS

1. Original and/or subsequent record used to evaluate the corner position.
2. Description of evidence found, note discrepancies in the record, state method of establishing lost or obliterated corners.
3. Description of monument and accessories set to perpetuate the corner position.
4. Sketch of corner, show all pertinent data which can best be shown in a sketch example, corner marking, topography ties, position of accessories, etc.
5. Certification must be signed and sealed by Land Surveyor registered in the State of Montana.
6. Fill in Cross Index & Section Diagram at bottom of sheet.

## CERTIFIED CORNER RECORDATION

Corner 8 of HES 738 T. 32 N. R. 33 W. Lincoln County

- I. 1917 HES 738 record by E. R. Johnson: "Set a small stone, marked with a cross(x) under a sandstone. 24x10x8 ins., 14 ins. in the ground, marked 8 HES 738 on SW face, and a cross(x) on top for the exact corner point, from which

A cross(x) on a fir, 18 ins. diam., bears S20°E, 20 lks. (13.20 ft.) dist.  
 A cross(x) on a fir, 6 ins. diam., bears S81°30'W, 8 lks. (5.28 ft.) dist.  
 Each blazed and scribed 8 HES 738 BT."

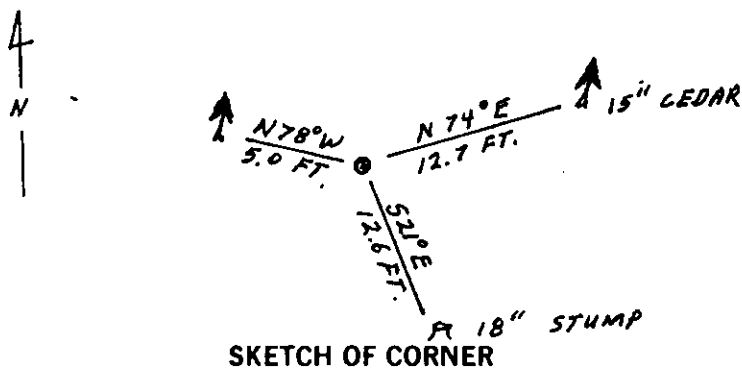
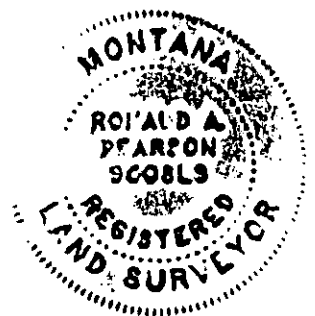
- II. Found a stone, 8x6 ins., 7 ins. out of the ground with 8 HES 738 on SW face.

From which:

A cedar, 15 ins. diam., bears N74°E, 12.7 ft. dist., mkd. RM. (No record)  
 A stump, 18 ins. diam., bears S21°E, 12.6 ft. dist., mkd. 8 HES 738 BT.  
 A fir, 11 ins. diam., bears N78°W, 5.0 ft. dist., healed face.

- III. Painted red bands around the bearing trees and attached "Land Survey Monument" and "Bearing Tree" signs.  
 Set a galvanized steel gaurd post with "Land Survey Marker" and Property Boundary: decals, South, 3 ft.

Magnetic declination: 20° East



SKETCH OF CORNER

## CERTIFICATION

I, Kevin A. Todd  
 certify the information shown herein is true and correct.

Kevin A. Todd  
 Signature Ground Party Chief

I, Ronald A. Pearson  
 certify that this Corner Record correctly represents work performed  
 by me or under my direction in compliance with the "Corner  
 Recordation Act" (70-22-101, et seq., M.C.A.)

Ronald A. Pearson  
 Signature of Surveyor & Seal

Date: 11/16/92 Reg. No. 9008LS

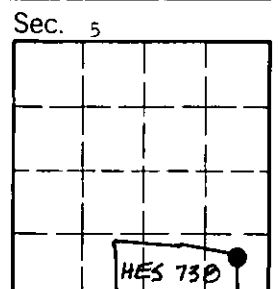
Employer: U.S. FOREST SERVICE

Office of Clerk and Recorder, County of Lincoln. This "corner  
 record" was filed for record on 12-15-92  
 was noted on the cross-index plat and is assigned page No. 5184, in  
 book No. Coral M Cummings by BB

County Official

8 HES 738 32 N. 33W

Cross Index No. T. R. PMM



• - corner this sheet