

## INSTRUCTIONS

1. Original and/or subsequent record used to evaluate the corner position.
2. Description of evidence found, note discrepancies in the record, state method of establishing lost or obliterated corners.
3. Description of monument and accessories set to perpetuate the corner position.
4. Sketch of corner, show all pertinent data which can best be shown in a sketch example, corner marking, topography ties, position of accessories, etc.
5. Certification must be signed and sealed by Land Surveyor registered in the State of Montana.
6. Fill in Cross Index & Section Diagram at bottom of sheet.

#1 H.E.S. 1051

## CERTIFIED CORNER RECORDATION

#1 H.E.S. 415

Corner W 1/4 Sec. 30 T. 32 N R. 33 W P.M.M. Lincoln County

- I. 1893 Original GLO Record: Set a limestone, 14x10x6 ins. 10 ins. in the ground, for  $\frac{1}{4}$  sec. cor., marked  $\frac{1}{4}$  on the West face, blazed and marked 2 bearing trees.

"Cor. No. 1 H.E.S. 415" 1915 USDA Record: Beginning at Cor. No. 1, identical with point for Cor. No. 1 of the listing survey and Cor. No. 1 of H.A. No. 890, list 1-2581, identical with the  $\frac{1}{4}$  cor. of secs. 25 and 30, a limestone 4x10x6 ins. above ground, marked and witnessed as described by the Surveyor General.

Set a stake alongside the  $\frac{1}{4}$  cor., marked 1 H.E.S. 415 on the NE. face and a cross (X) on the  $\frac{1}{4}$  Cor. for the exact corner point, from which I blazed and marked 2 bearing trees. Raise a mound of earth, 4 ft. base, 2 ft. high, NE. of the corner.

"Cor. No. 1 H.E.S. 1051" 1921 USDA Record: Beginning at the  $\frac{1}{4}$  Sec. Cor. of Sec. 25 T32N, R34W and Sec. 30 of T32N R33W, which is a limestone 4x7x7 ins. above ground, marked and witnessed as described by the Surveyor General, identical in point for Cor. No. 1 of H.E.S. 415 (accepted) and listing Cor. No. 1. I adopt this Cor. for Cor. No. 1 of this survey.

Place a wooden stake 12x4x4 ins. above ground, 1 lks. SE. of the corner, marked 1 H.E.S. 1051. From the cross (X) on the stone, which is the exact corner point I blaze and mark 2 bearing trees.

1967 BLM Remonumentation: The  $\frac{1}{4}$  sec. cor. of secs. 25 and 30, on the E. bdy. of Tp., identical with Cor. No. 1 of H.E.S. 415 and Cor. No. 1 of H.E.S. 1051, monumented with a limestone, 14x10x6 ins., firmly set, marked  $\frac{1}{4}$  on the West face, and witnessed by the remains of the original bearing trees.

At the corner point,

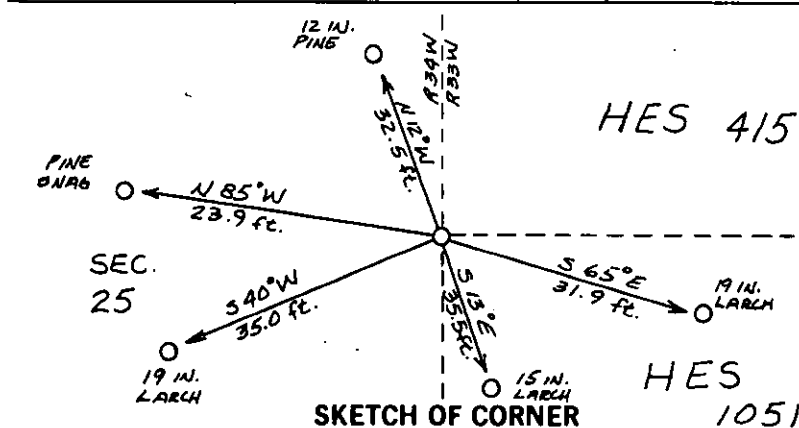
Set an iron post, 30 ins. long, 2 $\frac{1}{2}$  ins. diam., 24 ins. in the ground with brass cap marked as shown, from which:

T32N  
R34W | R33W  
 $\frac{1}{4}$   
S 25 | S 30  
1967

The original bearing trees:

A tamarack stump, 9 ins. diam., bears S88 $\frac{1}{2}$ °E, 19 lks. dist., scribing not visible. (GLO Record)

(over)

1. Doug Mada

certify the information shown herein is true and correct.

Signature of County Party Chief

1. Thomas C. Hill

certify that this Corner Record correctly represents work performed by me or under my direction in compliance with the "Corner Recordation Act" (70-22-101, et seq., M.C.A.)

Signature of Surveyor &amp; Seal

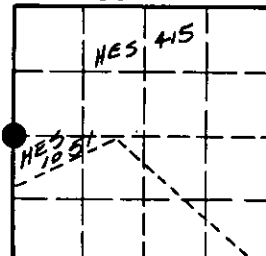
Date: 1-25-85 Reg. No. 5612-SEmployer: U.S.F.S.

Office of Clerk and Recorder, County of Lincoln. This "corner record" was filed for record on Jan 28, 1985

was noted on the cross-index plat and is assigned page No. 2940, in book No. \_\_\_\_\_

Janet B. Sigel by Bill Smith  
County Official Deputy

Sec. 30



• - corner this sheet

Cross Index No. \_\_\_\_\_ T. \_\_\_\_\_ R. \_\_\_\_\_ P.M.M.

Adopted July 1, 1981, Montana Board of Professional Engineers &amp; Land Surveyors

# INSTRUCTIONS TO SURVEYORS FOR COMPLETION OF CERTIFIED CORNER RECORDATION FORMS

## I. ORIGINAL AND/OR SUBSEQUENT RECORD:

This item should describe or quote those portions of the original or subsequent record which were used in evaluating the corner position. The original record will usually be the General Land Office field notes. Subsequent record can come from several sources: Previously filed corner records, maps and plats, private and public records, etc. Some of the subsequent record, even though not in the public record, but known to have validity by the surveyor, may be quoted and appropriately noted.

The record data helps support the reestablished corner position because it clearly shows what history the surveyor based his corner position on. In some cases, however, the record may be unknown or not pertinent. A statement to that effect should appear on the corner record.

## II. DESCRIPTION OF EVIDENCE FOUND OR METHOD OF LOCATING CORNER POSITION:

This item will describe the original or subsequent record evidence found. If portions of the found evidence cannot be reconciled with the record, then the disregarded record should be noted, and, if possible, an opinion as to its cause narrated.

If no physical evidence of the original or subsequent monuments and accessories can be found, then the method used to reestablish the lost or obliterated corner (single proportion, fence intersection, parol evidence, terrain calls, centerline of road, etc.) shall be indicated.

## III. DESCRIPTION OF MONUMENTS AND ACCESSORIES SET TO PERPETUATE THE CORNER POSITION:

This item should list all details about the corner and its location which will help exclusively identify the corner position; including size and type of monument, how marked if not shown in sketch, and distinguishing topographic calls which help locate the corner. In many cases, instructions on how to find the corner should be included.

References or ties to other corners are optional and may be drawn on the face or back of the corner record form, or references to Certificate of Survey may be made. Separate drawings may be attached to the corner form.

If state plane coordinate values for the corner position are shown, then the control upon which they are based should be indicated.

## IV. SKETCH OF CORNER:

This item will usually show how a found or set corner is marked and may also show topography or accessory monuments found or set and their relation to the corner. There is no stipulated format; the sketch could be transcribed field note entries.

## V. CERTIFICATION:

The name and signature of the ground party chief is optional.

The Surveyor who performed or directed the field work which is depicted on the "Certified Corner Record" shall sign and affix his seal in the Certification.

The employer blank is optional but useful in tracking down original field note data or adjacent record if, in the future, questions arise about the corner.

## VI.

The Cross Index at the bottom of the page should be completed by the Surveyor. Only the single Township Index where the corner is filed shall be completed.

The lower righthand corner is a corner location diagram and should have the pertinent section filled in at the top and a closed circle indicating the appropriate corner position in the section filled in. This is intended to be an aid in searching the "Record" once it has been filed.

A pine, 11 ins. diam., bears N76°45'W, 48 lks. dist., marked  $\frac{1}{4}$  S25 BT  
(GLO Record)

The new bearing trees:

A larch, 12 ins. diam., bears S75½°E, 54 lks. dist., marked  $\frac{1}{4}$  S30 BT.  
Bury the original stone alongside the iron post.

II. I found a BLM brass cap, 10 ins. above ground, with a collar of stone,  
from which:

A pine snag, 9 ins. diam., bears N85°W, 23.9 ft. dist., scribing  
visible.

A larch 15 ins. diam., bears S13°E, 35.5 ft. dist., scribing  
overgrown.

A larch, 19 ins. diam., bears S65°E, 31.9 ft. dist., scribing visible.

A larch, 19 ins. diam., bears S40°W, 35.0 ft. dist., scribing  
overgrown.

A pine, 12 ins. diam., bears N12°W, 32.5 ft. dist., scribing visible.

III. I set a 6 ft. galvanized steel guard post with a Survey Marker decal  
attached, bears East, 2 ft. dist. to the corner.

I painted red bands around bearing trees and attached BT and Land Survey  
Monument signs.