

INSTRUCTIONS

1. Original and/or subsequent record used to evaluate the corner position.
2. Description of evidence found, note discrepancies in the record, state method of establishing lost or obliterated corners.
3. Description of monument and accessories set to perpetuate the corner position.
4. Sketch of corner, show all pertinent data which can best be shown in a sketch example, corner marking, topography ties, position of accessories, etc.
5. Certification must be signed and sealed by Land Surveyor registered in the State of Montana.
6. Fill in Cross Index & Section Diagram at bottom of sheet.

CERTIFIED CORNER RECORDATION

Corner East 1/4 Sec. 6 T. 32 N. R. 31 W. Lincoln County

I. 1901 GLO record by Abram L. Jaqueth: Set a limestone, 10x8x6 ins. 7 ins. in the ground, for 1/4 sec. cor.
marked 1/4 on W face, from which

A tamarack, 10 ins. diam., bears N28°30'E, 30 1/2 lks. (20.13 ft.) dist., mkd. 1/4 S5 BT.
A fir, 10 ins. diam., bears S19°30'W, 13 lks. (8.58 ft.) dist., mkd. 1/4 S6 BT.

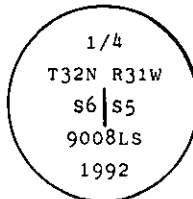
II. Found a firmly set stone, 11x8x4 ins., mkd. 1/4 on the West face.

From which:

A larch, 10 ins. diam., bears N45°E, 8.7 ft. dist., visible scribing. (No record)

Record bearing trees destroyed by logging activities.

III. Set a 2 1/2 ins. diam., 30 ins. long. alum. pipe 26 ins. in the ground with alum. cap mkd. as shown

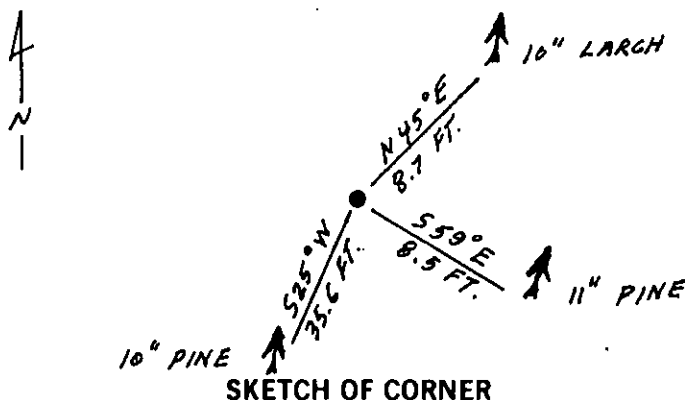
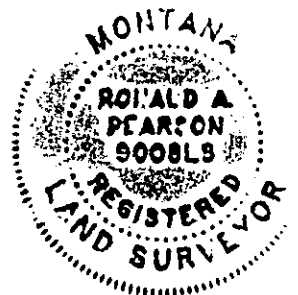


Established two new bearing trees:

A pine, 11 ins. diam., bears S59°E, 8.5 ft. dist., mkd. 1/4 S5 BT.
A pine, 10 ins. diam., bears S25°W, 35.6 ft. dist., mkd. 1/4 S6 BT.

Painted red bands around the bearing trees and attached "Land Survey Monument" and "Bearing Tree" signs.
Set a galvanized steel gaurd post with "Land Survey Marker" and Property Boundary: decals, North, 3 ft.

Magnetic declination: 20° East



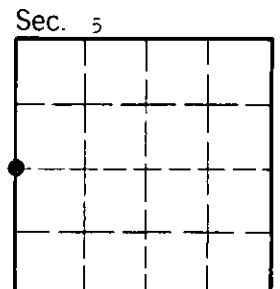
SKETCH OF CORNER

CERTIFICATION
I, Kevin A. Todd
certify the information shown herein is true and correct.
Kevin A. Todd
Signature Ground Party Chief
I, Ronald A. Pearson
certify that this Corner Record correctly represents work performed
by me or under my direction in compliance with the "Corner
Recordation Act" (70-22-101 et seq., M.C.A.)
Ronald A. Pearson
Signature of Surveyor & Seal
Date: 11/30/92 Reg. No. 9008LS
Employer: U. S. FOREST SERVICE

Office of Clerk and Recorder, County of Lincoln. This "corner
record" was filed for record on 12-15-92
was noted on the cross-index plat and is assigned page No. 5162, in
book No. Coral M Cummings by B13

County Official

C-5 32 N 31W
Cross Index No. T. R. PMM



• - corner this sheet