

INSTRUCTIONS

1. Original and/or subsequent record used to evaluate the corner position.
2. Description of evidence found, note discrepancies in the record, state method of establishing lost or obliterated corners.
3. Description of monument and accessories set to perpetuate the corner position.
4. Sketch of corner, show all pertinent data which can best be shown in a sketch example, corner marking, topography ties, position of accessories, etc.
5. Certification must be signed and sealed by Land Surveyor registered in the State of Montana.
6. Fill in Cross Index & Section Diagram at bottom of sheet.

CERTIFIED CORNER RECORDATION

Corner South 1/4 Sec. 5 T. 32 N. R. 31 W. P.M.M. Lincoln County

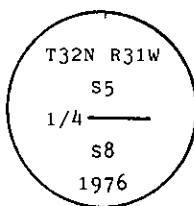
I. 1901 GLO record by Abram L. Jaqueth: Set a stone and two bearing trees.

1976 BLM remonumentation record: The 1/4 sec. cor. of secs. 5 and 8, monumented with a limestone, 12x10x7 ins., firmly set 8 ins. in the ground, mkd. 1/4 on the N face and witnessed by the original bearing trees.

A pine, 18 ins. diam., bears S29 1/2° E, 7 lks. (4.62 ft.) dist., mkd. 1/4 S8 BT.

A pine, 20 ins. diam., bears N25° W, 24 lks. (15.84 ft.) dist., with an overgrown blaze.

At the corner point set an iron post, 30 ins. long, 2 1/2 ins. diam., 2 1/4 ins. in the ground, with brass cap mkd.



II. Found a 2 1/2 ins. diam. iron pipe 8 ins. out of the ground with BLM brass cap mkd. as shown.

From which:

A pine stump, 19 ins. diam., bears S29° E, 4.5 ft. dist., mkd. 1/4.

A pine stump, 20 ins. diam., bears N24° W, 15.8 ft. dist., healed face.

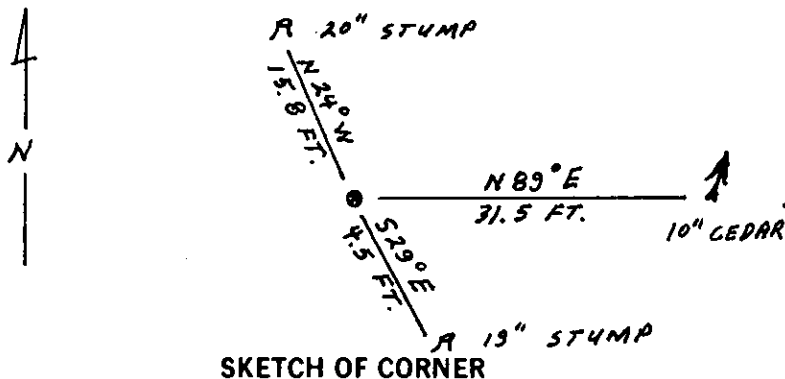
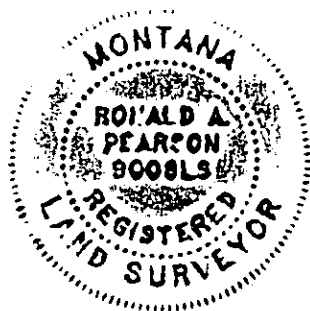
III. Established one new bearing tree:

A cedar, 10 ins. diam., bears N89° E, 31.5 ft. dist., mkd. 1/4 S5 BT.

No other available trees.

Painted red bands around the bearing trees and attached "Land Survey Monument" and "Bearing Tree" signs. Set a galvanized steel gaurd post with "Land Survey Marker" and Property Boundary: decals, West, 3 ft.

Magnetic declination: 20° East



SKETCH OF CORNER

CERTIFICATION

I, Kevin A. Todd
certify the information shown herein is true and correct.

Kevin A. Todd
Signature Ground Party Chief

I, Ronald A. Pearson
certify that this Corner Record correctly represents work performed
by me or under my direction in compliance with the "Corner
Recordation Act" (70-22-101, et seq., M.C.A.)

Ronald A. Pearson
Signature of Surveyor & Seal

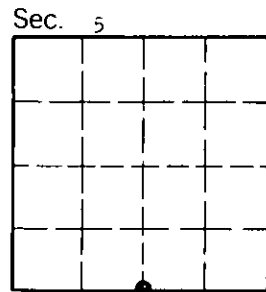
Date: 11/30/92 Reg. No. 9008LS

Employer: U.S. FOREST SERVICE

Office of Clerk and Recorder, County of Lincoln. This "corner
record" was filed for record on 12-15-92
was noted on the cross-index plat and is assigned page No. 5159, in
book No. Coral M. Cummings by B.B.

County Official

E-7 32 N 31 W
Cross Index No. T. R. PMM



• - corner this sheet