

## INSTRUCTIONS

1. Original and/or subsequent record used to evaluate the corner position.
2. Description of evidence found, note discrepancies in the record, state method of establishing lost or obliterated corners.
3. Description of monument and accessories set to perpetuate the corner position.
4. Sketch of corner, show all pertinent data which can best be shown in a sketch example, corner marking, topography ties, position of accessories, etc.
5. Certification must be signed and sealed by Land Surveyor registered in the State of Montana.
6. Fill in Cross Index & Section Diagram at bottom of sheet.

## CERTIFIED CORNER RECORDATION

Corner WEST 1/4 COR. OF SEC. 32 T. 32 N. R. 31 W. P.M.M. LINCOLN County

- I. 1901, G.L.O. original record by Abram L. Jaqueth: Set a hemlock post, 3 ft. long, 6 ins. square, 24 ins. in the ground, for 1/4 sec. cor. marked 1/4 S.31 on W. face; 32 on E. face; from which

A fir 10 ins. diam. bears N.78°15'E. 15 lks. dist. marked 1/4 S.32 B.T.

A fir 16 ins. diam. bears S.55°45'W. 12 lks. dist. marked 1/4 S.31 B.T.

1978 Certified Land Corner recordation by M.D.Lauteren 4232S: No evidence found on the ground. Per Certificate of Survey No. 447 Set a brass cap marked as shown, by proportionate measurement.

T.32N. R.31W.

1/4

S31 S32

K.E.M.D.L.

4232S

from which

A red fir 1.7 ft. in circumference bears S26°26'10"E a dist. of 18.4 ft. to its center, the tree has a X marked in it breast high with a PK nail in the X; a BT is scribed in a notch at its trunk base.

A red fir 2.6 ft. in circumference bears N.53°13'10"W. a dist. of 27.9 ft. to its center. The tree is scribed E1/4 S31 BT. A finish nail is in the scribed face.

- II. Found a 2 ins. dia. pipe 8 ins. out of ground, with a brass cap marked as shown above.

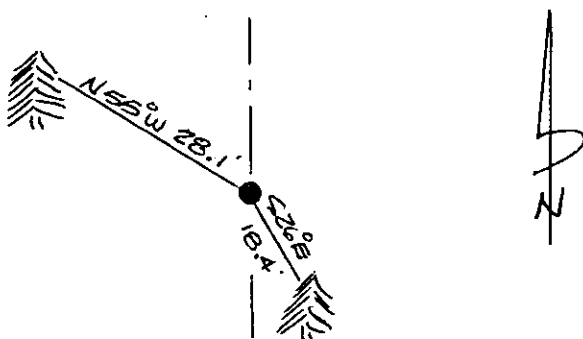
from which

A doug. fir 9 ins. dia. bears S26°E, 18.4 ft. dist. with overgrown blaze.

A doug. fir 14 ins. dia. bears N55°W, 28.1 ft. dist. with visible scribing.  
no evidence of original BT's.

- III. Set a guard post, with a "Survey Marker" decal attached, 3 ft. S. from corner.

Painted a red band around each bearing tree and attached "Land Survey Monument" and "Bearing Tree" signs where needed.



SKETCH OF CORNER

## CERTIFICATION

I, Kevin Todd  
certify the information shown herein is true and correct.

Signature Ground Party Chief

I, Ronald A. Pearson  
certify that this Corner Record correctly represents work performed by me or under my direction in compliance with the "Corner Recordation Act" (70-22-101, et seq., M.C.A.)

Signature of Surveyor & Seal

Date: 10/31/90 Reg. No. 9008LS

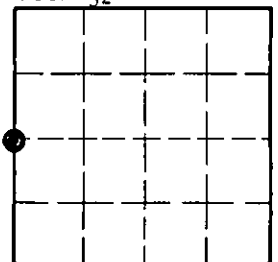
Employer: U.S. FOREST SERVICE

Office of Clerk and Recorder, County of Lincoln. This "corner record" was filed for record on Nov 9, 1990 was noted on the cross-index plat and is assigned page No. 4332, in book No. \_\_\_\_\_

County Official

X-5 32 N 31 W  
Cross Index No. \_\_\_\_\_ T. \_\_\_\_\_ R. \_\_\_\_\_ PMM

Sec. 32



• corner this sheet