

INSTRUCTIONS

1. Original and/or subsequent record used to evaluate the corner position.
2. Description of evidence found, note discrepancies in the record, state method of establishing lost or obliterated corners.
3. Description of monument and accessories set to perpetuate the corner position.
4. Sketch of corner, show all pertinent data which can best be shown in a sketch example, corner marking, topography ties, position of accessories, etc.
5. Certification must be signed and sealed by Land Surveyor registered in the State of Montana.
6. Fill in Cross Index & Section Diagram at bottom of sheet.

CERTIFIED CORNER RECORDATION

Corner EAST 1/4 COR. SEC. 32 T. 32 N. R. 31 W. P.M.M. Lincoln County

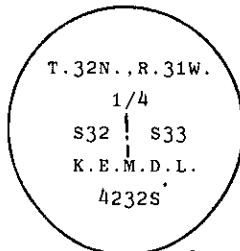
- I. 1901, G.L.O. original record by Abram L. Jaqueth: Set a granite stone, 24 X 10 X 7 ins. 18 ins. in the ground, for 1/4 sec. cor., marked 1/4 on W. face; from which

A fir 12 ins. diam. bears N.60°45'E. 16 lks. dist. marked 1/4 S.33 B.T.

A fir 14 ins. diam. bears N.50°30'W. 23 lks. dist. marked 1/4 S.32 B.T.

1978 Certified Land Corner recordation by M.D. Lauteren 4232S: "Found a granite stone, unscribed, approximately 24"X10"X7" in dimension, lying in the ground, from which a blown-down western larch (differing species from record) root hole bears N.50W. a distance of 23 links. The larch lays dead beside the hole, is 15" inner diameter, and has clear ax markings beneath which a 1/4 and part of a 2 are distinguishably scribed. Accepted the stone as original.

Set a brass cap marked as shown



from which

A red fir 2.0 ft. in circumference, bears S.22°45'07" a distance of 32.3 ft. to its center. The tree has an X marked in it breast high with BT scribed in a notch at its trunk base.

A red fir, 4.2 ft. circumference, bears N.69°12'57"E a dist. of 5.2 ft. to its center. The tree is scribed W 1/4 S33 BT."

placed original stone beside brass cap.

- II. Found a 2 ins. dia. pipe 7 ins. out of ground, with a brass cap marked as shown above. from which

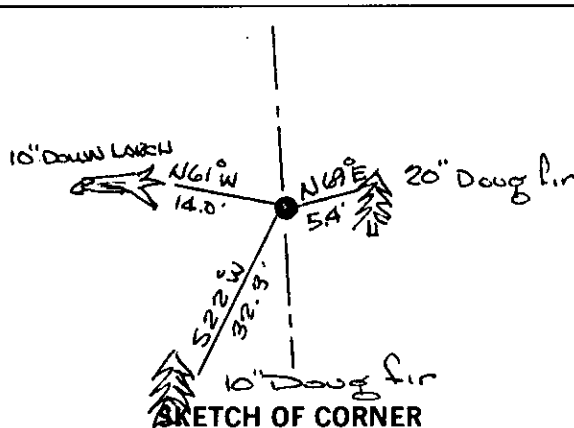
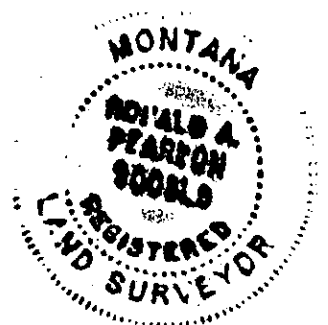
A Douglas fir 20 ins. dia. bears N.69°E. 5.4 ft. dist. with overgrown blaze.

A Douglas fir 10 ins. dia. bears S.22°W. 32.3 ft. dist. with overgrown blaze.

A down Larch 10 ins. dia. bears N.61°W. 14.0 ft. with "1/4" visible. (rec. fir N50°30'W. 15.8 ft.)

- III. Set a guard post, with a "Survey Marker" decal attached, 2 ft. S. from corner.

Painted a red band around each bearing tree and attached "Land Survey Monument" and "Bearing Tree" signs where needed.



CERTIFICATION

I, Kevin Todd
certify the information shown herein is true and correct.

Signature Ground Party Chief

I, Ronald A. Pearson
certify that this Corner Record correctly represents work performed by me or under my direction in compliance with the "Corner Recordation Act" (70-22-101, et seq., M.C.A.)

Signature of Surveyor & Seal

Date: 10/31/90 Reg. No. 9008LS

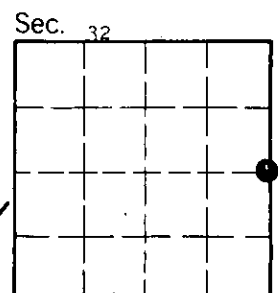
Employer: U.S. FOREST SERVICE

Office of Clerk and Recorder, County of Lincoln. This "corner record" was filed for record on 7200 9, 1990

was noted on the cross-index plat and is assigned page No. 4331, in book No. _____

Janet E. Sigel by Bill Buckell
County Official

X-9 32 N 31 W
Cross Index No. _____ T. _____ R. _____ PMM



• - corner this sheet