

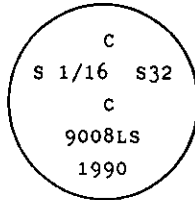
INSTRUCTIONS

1. Original and/or subsequent record used to evaluate the corner position.
2. Description of evidence found, note discrepancies in the record, state method of establishing lost or obliterated corners.
3. Description of monument and accessories set to perpetuate the corner position.
4. Sketch of corner, show all pertinent data which can best be shown in a sketch example, corner marking, topography ties, position of accessories, etc.
5. Certification must be signed and sealed by Land Surveyor registered in the State of Montana.
6. Fill in Cross Index & Section Diagram at bottom of sheet.

CERTIFIED CORNER RECORDATION

Corner CS 1/16 of Sec. 32 T. 32 N. R. 31 W. P.M.M. Lincoln County

- I. 1989 record per Certificate of Survey No. 1687 by D. McAlister: "Set a 5/8" x 24" rebar with plastic cap stamped 7328S."
- II. Found a 1/2 ins. dia. by 18 in. rebar, 2 ins. out of the ground with plastic cap marked McAlister 7328S.
- III. At verified position and in place of rebar, set a 2 1/2 in. dia. aluminum pipe, 30 ins. long, 24 ins. in the ground with attached 3 1/4 in. dia. aluminum, U.S.D.A. Forest Service cap marked as shown:



from which

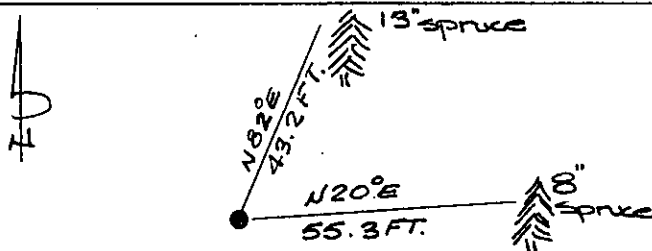
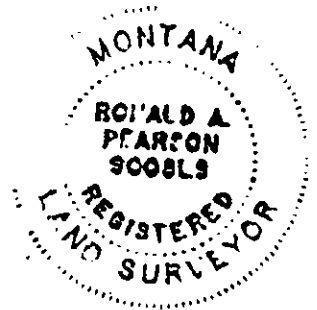
- A spruce, 13 ins. dia., bears N82° E, 43.2 ft. dist., mkd. C-S 1/16 S32 BT.
- A spruce, 8 ins. dia., bears N20° E, 55.3 ft. dist., mkd. C-S 1/16 S32 BT.

Placed found rebar inside aluminum pipe monument.

Set a 6 ft. galvanized steel guard post with Land Survey Marker and Property Boundary decals East, 3 ft.

Painted red band around the bearing trees and attached Land Survey Monument and Bearing Tree signs where needed.

Magnetic declination: East, 19°



SKETCH OF CORNER

CERTIFICATION
Kevin Todd

I. _____
certify the information shown herein is true and correct.

Signature Ground Party Chief
Ronald A. Pearson

I. _____
certify that this Corner Record correctly represents work performed by me or under my direction in compliance with the "Corner Recordation Act" (70-22-101 et seq. M.C.A.)

Signature of Surveyor & Seal

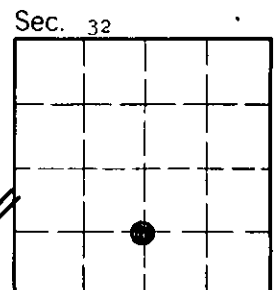
Date: 10/3/90 Reg. No. 9008LS

Employer: U.S. FOREST SERVICE

Office of Clerk and Recorder, County of Lincoln. This "corner record" was filed for record on Nov 8, 1990 was noted on the cross-index plat and is assigned page No. 4294 in book No. _____

James B. Siegel by Bill Buckell
County Official

Y-7 32 N 31 W
Cross Index No. _____ T. _____ R. _____ P.M.M.



• - corner this sheet