

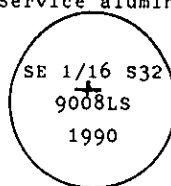
INSTRUCTIONS

1. Original and/or subsequent record used to evaluate the corner position.
2. Description of evidence found, note discrepancies in the record, state method of establishing lost or obliterated corners.
3. Description of monument and accessories set to perpetuate the corner position.
4. Sketch of corner, show all pertinent data which can best be shown in a sketch example, corner marking, topography ties, position of accessories, etc.
5. Certification must be signed and sealed by Land Surveyor registered in the State of Montana.
6. Fill in Cross Index & Section Diagram at bottom of sheet.

CERTIFIED CORNER RECORDATION

Corner SE 1/16 of Sec. 32 T. 32 N. R. 31 W. P.M.M. Lincoln County

- I. No previous record.
- II. No evidence found on the ground.
- III. At the determined corner position, set a 3/4 in. dia. aluminum rod, 28 ins. long, 24 ins. in the ground with an attached 3 1/4 in. dia., U.S.D.A. Forest Service aluminum cap marked as shown:



from which

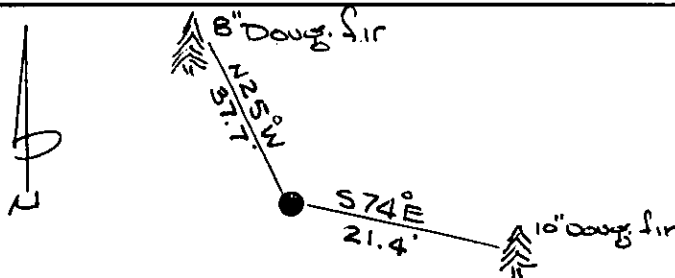
A douglas fir, 10 ins. dia., bears $S74^{\circ}E$, 21.4 ft. dist., mkd. SE 1/16 S32 BT.
 A douglas fir, 8 ins. dia., bears $N25^{\circ}W$, 37.7 ft. dist., mkd. SE 1/16 S32 BT.

Place a collar of stone around monument.

Set a 6 ft. galvanized steel guard post with Land Survey Marker and Property Boundary decals South, 3 ft.

Painted red bands around the bearing trees and attached Land Survey Monument and Bearing Tree signs where needed.

Magnetic Declination: East 19°



SKETCH OF CORNER

CERTIFICATION

Kevin Todd

I, _____
 certify the information shown herein is true and correct.

Signature Ground Party Chief
 Ronald A. Pearson

I, _____
 certify that this Corner Record correctly represents work performed by me or under my direction in compliance with the "Corner Recordation Act" (70-22-101, et seq., M.C.A.)

Ronald A. Pearson
 Signature of Surveyor & Seal

Date: 10/3/90 Reg. No. 9008LS

Employer: U.S. FOREST SERVICE

Office of Clerk and Recorder, County of Lincoln. This "corner record" was filed for record on Nov 8, 1990 was noted on the cross-index plat and is assigned page No. 4293, in book No. _____

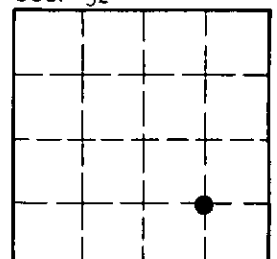
Grant St. Sigel by Bill Buckhoff
 County Official

Y-8

32 N 31 W

Cross Index No. _____ T. _____ R. _____ PMM

Sec. 32



• - corner this sheet