

## INSTRUCTIONS

1. Original and/or subsequent record used to evaluate the corner position.
2. Description of evidence found, note discrepancies in the record, state method of establishing lost or obliterated corners.
3. Description of monument and accessories set to perpetuate the corner position.
4. Sketch of corner, show all pertinent data which can best be shown in a sketch example, corner marking, topography ties, position of accessories, etc.
5. Certification must be signed and sealed by Land Surveyor registered in the State of Montana.
6. Fill in Cross Index & Section Diagram at bottom of sheet.

## CERTIFIED CORNER RECORDATION

Corner of Secs. 28, 29, 32, 33 T. 32 N., R. 31 W., P.M.M. Lincoln County

- I. 1901, G.L.O. original record by Abram L. Jaqueth: "Set a granite stone 20x10x9 ins. 15 ins. in the ground, for cor. of Secs. 28, 29, 32 and 33, marked with 1 notch on S. and 4 notches on E. edges: from which

A tamarack, 16 ins. diam., bears N15°15'E, 10 lks. dist., marked T32N R31W S28 BT.  
 A tamarack, 10 ins. diam., bears S15°E, 46 lks. dist., marked T32N R31W S33 BT.  
 A tamarack, 13 ins. diam., bears S56°30'W, 37 lks. dist., marked T32N R31W S32 BT.  
 A tamarack, 12 ins. diam., bears N63°W, 17 lks. dist., marked T32N R31W S29 BT."

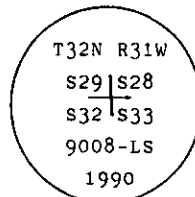
- II. Found, a buried granite stone 20x10x5 ins., no visible marks, from which

A saw stump, 3 ft. high by 18 ins. diam., bears N10°E, 6.6 ft. (10 lks.) dist., mkd. T32N R31W S28 BT.

A root crown, 12 ins. diam., bears S60°W, 24.0 ft. (36.4 lks.) dist. no visible marks.

A partial saw stump, 3 ft. high by 10 ins. diam., bears N65°W, 11.2 ft. (17 lks.) dist., mkd. 32 R31W S2.

- III. At the corner point, set a 2 1/2 ins. diam. by 30 ins. length aluminum pipe, 28 ins. in the ground with 3 1/4 ins. diam. U.S.D.A. aluminum cap, marked:



Marked four new bearing trees:

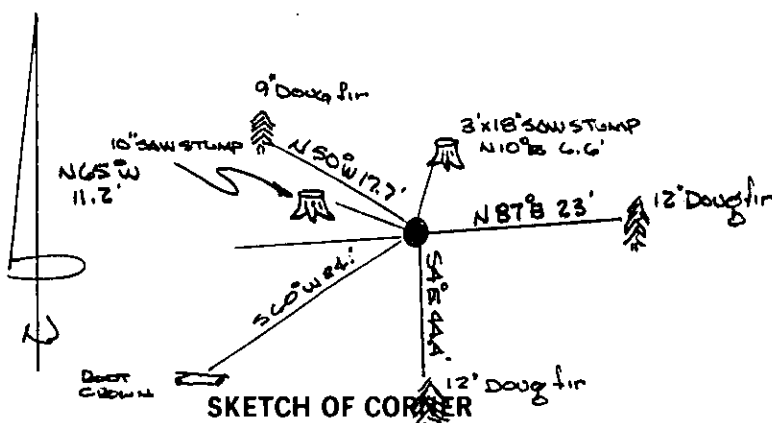
A douglas fir, 12 ins. diam., bears N87°E, 23.0 ft. dist., mkd. T32N R31W S28 BT.  
 A douglas fir, 12 ins. diam., bears S4°E, 44.4 ft. dist., mkd. T32N R31W S33 BT.  
 A douglas fir, 19 ins. diam., bears S86°W, 22.7 ft. dist., mkd. T32N R31W S32 BT.  
 A douglas fir, 9 ins. diam., bears N50°W, 17.7 ft. dist., mkd. T32N R31W S29 BT.

Buried original stone monument alongside the aluminum pipe.

Set a 6 ft. galvanized steel guard post with Land Survey Marker decal, West, 3 ft.

Painted red bands around the bearing trees and attached Land Survey Monument and Bearing Tree signs where needed.

Magnetic Declination: East, 19°



SKETCH OF CORNER

CERTIFICATION  
Gary C. Crismon

I, \_\_\_\_\_  
certify the information shown herein is true and correct.

Signature Ground Party Chief  
Ronald A. Pearson

I, \_\_\_\_\_  
certify that this Corner Record correctly represents work performed by me or under my direction in compliance with the "Corner Recordation Act" (70-22-101, et seq. M.C.A.)

Signature of Surveyor & Seal

Date: 7/9/90 Reg. No. 9008LS

Employer: U.S. FOREST SERVICE

Office of Clerk and Recorder, County of Lincoln This "corner

record" was filed for record on Nov. 8, 1990

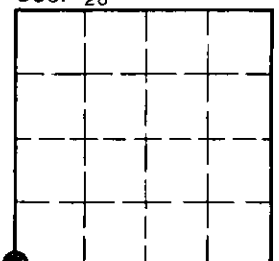
was noted on the cross-index plat and is assigned page No. 4286, in

book No. \_\_\_\_\_

*Janet F. Sigal by Bill Buckhoff*  
County Official

V-9 32 N 31 W  
Cross Index No. \_\_\_\_\_ T. \_\_\_\_\_ R. \_\_\_\_\_ PMM

Sec. 28



• - corner this sheet