

INSTRUCTIONS

1. Original and/or subsequent record used to evaluate the corner position.
2. Description of evidence found, note discrepancies in the record, state method of establishing lost or obliterated corners.
3. Description of monument and accessories set to perpetuate the corner position.
4. Sketch of corner, show all pertinent data which can best be shown in a sketch example, corner marking, topography ties, position of accessories, etc.
5. Certification must be signed and sealed by Land Surveyor registered in the State of Montana.
6. Fill in Cross Index & Section Diagram at bottom of sheet.

CERTIFIED CORNER RECORDATION

Corner NE 1/4, S9 T. 32N R. 31W P.M.M. LINCOLN County

1) NO ORIGINAL EVIDENCE / RECORD

2) NONE

3) SET 3 1/2" ALUMINUM CAP ON 3/4" ALUM. ROD.
FROM WHICH:

A 10" DBH. WHITE PINE BEARS SOUTH 31.2 FT (B.T.)
NE 1/4 S9 BT

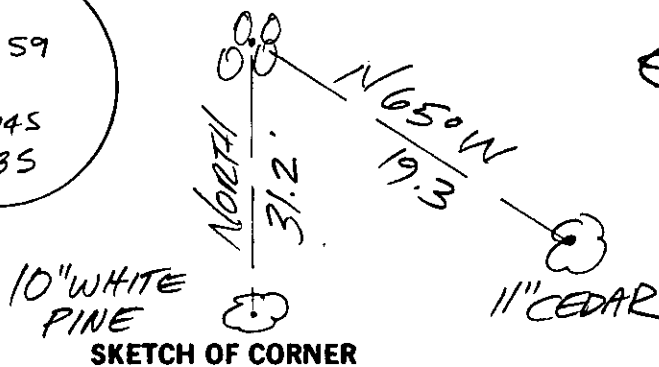
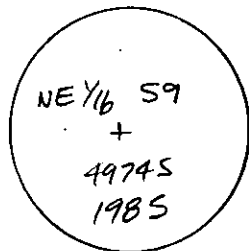
A 11" DBH. CEDAR BEARS S65°E 19.3 FT (B.T.)
BLAZE HEAD HIGH (OLD) NE 1/4 S9 BT

SCRIBES AND 6" BANDS PAINTED RED.

STEEL POSTS BEAR, NELY 1.4 FT AND SWLY 1.1 FT.

BT TAGS AND SURVEY MONUMENT SIGNS
ATTACHED TO BEARING TREES.

ROCK MOUND



CERTIFICATION

I, Gerald E. Bunton, certify the information shown herein to be true and correct.

Signature Ground Party Chief

GERALD E. BUNTON

certify that this Corner Record correctly represents work performed by me or under my direction in compliance with the "Corner Recordation Act" (30-22-101, et seq., M.C.A.)

Signature of Surveyor & Seal

Date: 8/29/85 Reg. No. 4974-S

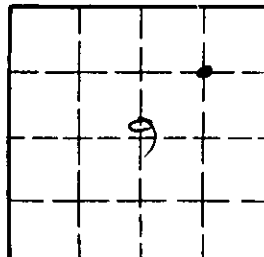
Employer: BUNTON'S TECH. SVCS., INC.

Office of Clerk and Recorder, County of Lincoln. This "corner record" was filed for record on Sept 10, 1985

was noted on the cross-index plat and is assigned page No. 3070, in book No. _____

Janet BF Sigel by Bill Buckhoff
County Official

Sec. 9



Cross Index No. _____ T. _____ R. _____ P.M.M.

• - corner this sheet