

INSTRUCTIONS

1. Original and/or subsequent record used to evaluate the corner position.
2. Description of evidence found, note discrepancies in the record, state method of establishing lost or obliterated corners.
3. Description of monument and accessories set to perpetuate the corner position.
4. Sketch of corner, show all pertinent data which can best be shown in a sketch example, corner marking, topography ties, position of accessories, etc.
5. Certification must be signed and sealed by Land Surveyor registered in the State of Montana.
6. Fill in Cross Index & Section Diagram at bottom of sheet.

CERTIFIED CORNER RECORDATION

Corner C-N 1/6 S-9 T. 32N R. 31W P.M.M. LINCOLN County

1) NO ORIGINAL EVIDENCE / RECORD

2) NONE

3) SET 3 1/2" ALUMINUM CAP ON 3/4" ROD
FROM WHICH:

A 7" D.B.H. D. FIR BEARS S 5° W 19.1 FT. (BT)
C-N 1/6 S9 BT

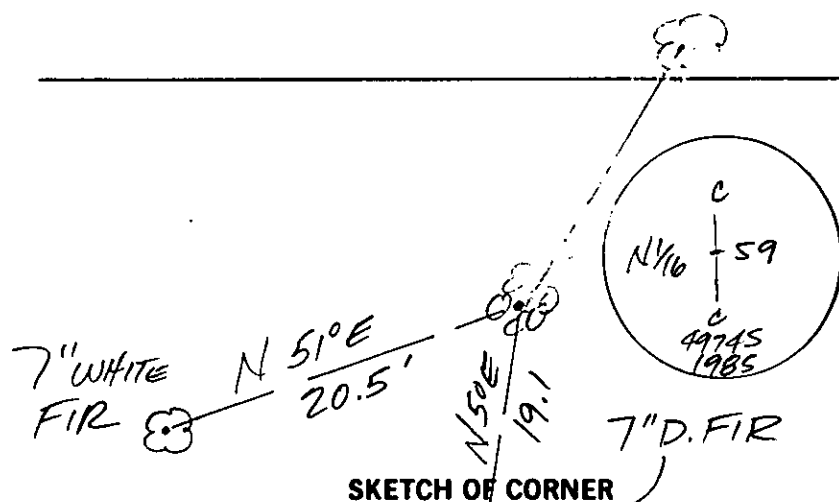
A 7" D.B.H. WHITE FIR BEARS S 51° W 20.5 FT. (BT)
OLD LINE BLAZE AND BLUE PAINT ON THIS
TREE. C-N 1/6 S9 BT

SCRIBES AND .6" BANDS PAINTED RED

STEEL POST BEARS 3LY 0.8 FT.

BT. TAGS AND SURVEY MONUMENT SIGNS
ATTACHED TO BEARING TREES.

ROCK MOUND.



SKETCH OF CORNER

CERTIFICATION

I, _____
certify the information shown herein is true and correct.

Signature of County Clerk

FRANK E. BUNTON

certify that this Corner Record correctly represents work performed
by me or under my direction in compliance with the "Corner
Recordation Act" (70-22-101, et seq., M.C.A.)

Signature of Surveyor & Seal

Date: 8/29/85 Reg. No. 4974-S

Employer: BUNTON'S ECH. SURV. INC.

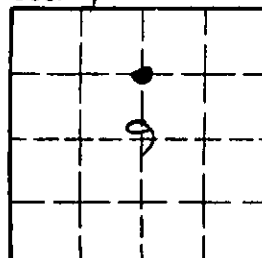
Office of Clerk and Recorder, County of Lincoln. This "corner
record" was filed for record on Sept 10, 1985

was noted on the cross-index plat and is assigned page No. 3069, in.

book No. _____

James B. F. Sugel by Bill Buchhoff
County Official

Sec. 9



Cross Index No. _____ T. _____ R. _____ P.M.M.

• - corner this sheet

