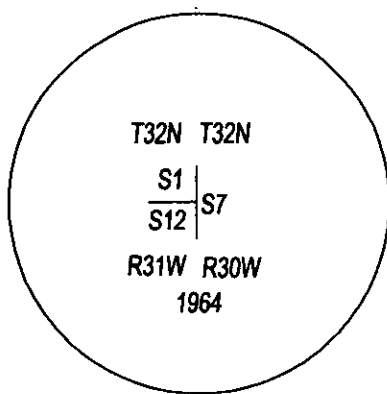
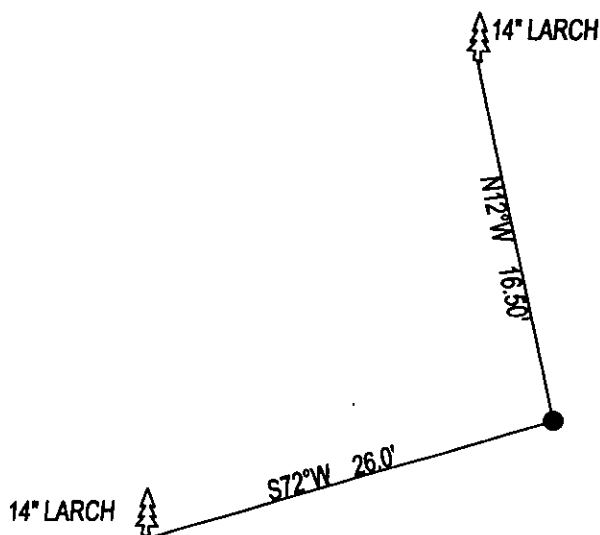


# CERTIFIED CORNER RECORDATION

CORNER NE CORNER SEC. 12 T. 32N R. 31W P.M.M., LINCOLN COUNTY

FOUND: 3 1/4" BLM BRASS CAP STAMPED AS SHOWN, FROM WHICH:  
14" LARCH BEARS S72°W, 26.0' WITH OVERGROWN SCRIBE.  
14" LARCH BEARS N12°W, 16.50' WITH OVERGROWN SCRIBE.

MAINTENANCE: REMOVED BRUSH AND TREE LIMBS FROM CORNER AREA.  
SET 5 FOOT STEEL POST 2 FEET SOUTH OF CORNER, PAINTED BT'S RED.



SKETCH OF CORNER

## CERTIFICATION

I, DAN CROFT

CERTIFY THE INFORMATION SHOWN HEREIN IS TRUE AND CORRECT.

SIGNATURE GROUND PARTY CHIEF

I, MARC J. CARSTENS

CERTIFY THAT THIS CORNER RECORD CORRECTLY REPRESENTS WORK PERFORMED BY ME OR UNDER MY DIRECTION IN COMPLIANCE WITH THE "CORNER RECORDATION ACT" (70-22-101, ET SEQ., M.C.A.)

SIGNATURE OF SURVEYOR & SEAL

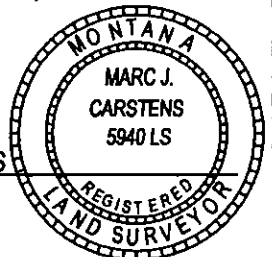
10-14-13

DATE

CARSTENS SURVEYING

EMPLOYER

5940LS  
REG. NO.



OFFICE OF CLERK AND RECORDER, COUNTY OF LINCOLN

THIS CORNER 248113 BOOK: CCR CC&R'S PAGE: 12089 Pages: 1

STATE OF MONTANA LINCOLN COUNTY

AND IS AS: RECORDED: 10/25/2013 12:55 KOI: CC&R'S

TAMMY D. LAUER CLERK AND RECORDER

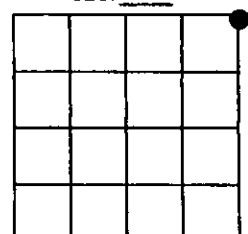
FEE: \$0.00

COUNTY OF FOR: CARSTENS LAND SURVEYING

CROSS INDEX NO. E-25 T. 32N R. 31W P.M.M.

ADOPTED JULY 1, 1981, MONTANA BOARD OF PROFESSIONAL ENGINEERS & LAND SURVEYORS

SEC. 12



● CORNER THIS SHEET