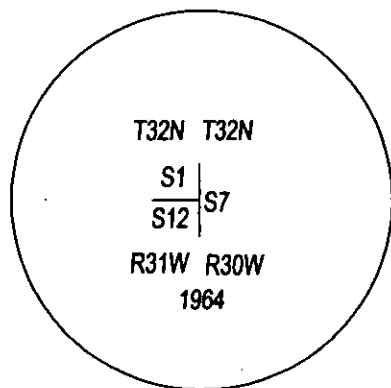
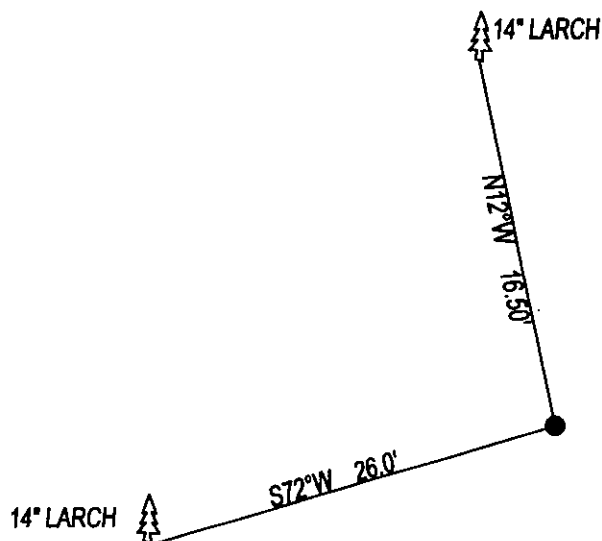


CERTIFIED CORNER RECORDATION

CORNER NE CORNER SEC. 12 T. 32N, R. 31W, P.M.M., LINCOLN COUNTY

FOUND: 3 1/4" BLM BRASS CAP STAMPED AS SHOWN, FROM WHICH;
 14" LARCH BEARS S72°W, 26.0' WITH OVERGROWN SCRIBE.
 14" LARCH BEARS N12°W, 16.50' WITH OVERGROWN SCRIBE.

MAINTENANCE: REMOVED BRUSH AND TREE LIMBS FROM CORNER AREA.
 SET 5 FOOT STEEL POST 2 FEET SOUTH OF CORNER, PAINTED BT'S RED.



SKETCH OF CORNER

CERTIFICATION

I, DAN CROFT

CERTIFY THE INFORMATION SHOWN HEREIN IS TRUE AND CORRECT.

SIGNATURE GROUND PARTY CHIEF

I, MARC J. CARSTENS

CERTIFY THAT THIS CORNER RECORD CORRECTLY REPRESENTS WORK PERFORMED BY ME OR UNDER MY DIRECTION IN COMPLIANCE WITH THE "CORNER RECORDATION ACT" (70-22-101, ET SEQ., M.C.A.)

[Signature]
 SIGNATURE OF SURVEYOR & SEAL

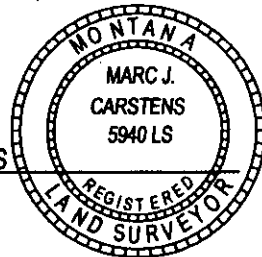
10-14-13

DATE

CARSTENS SURVEYING

EMPLOYER

5940LS
 REG. NO.



OFFICE OF CLERK AND RECORDER, COUNTY OF LINCOLN
 THIS' 248112 BOOK: CCR CC&R'S PAGE: 12088 Pages: 1

STATE OF MONTANA LINCOLN COUNTY

AND I RECORDED: 10/25/2013 12:50 KOI: CC&R'S

TAMMY D. LAUER CLERK AND RECORDER

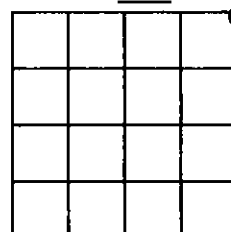
COUN FEE: \$0.00

FOR: CARSTENS LAND SURVEYING

CROSS INDEX NO. E-25 T. 32N, R. 31W, P.M.M.

ADOPTED JULY 1, 1981, MONTANA BOARD OF PROFESSIONAL ENGINEERS & LAND SURVEYORS

SEC. 12



● CORNER THIS SHEET