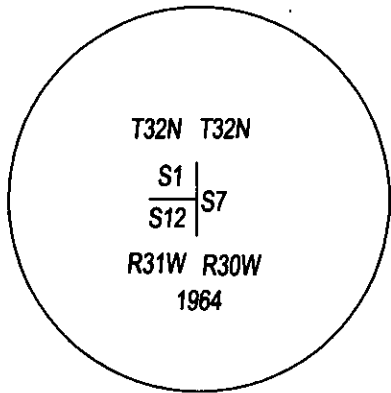
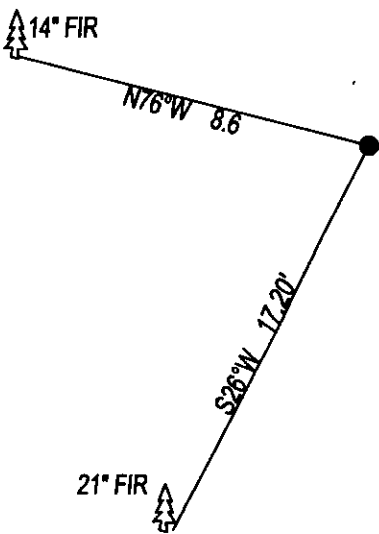


CERTIFIED CORNER RECORDATION

CORNER SE CORNER SEC. 12 T. 32N R. 31W P.M.M., LINCOLN COUNTY

FOUND: 3 1/4" BLM BRASS CAP STAMPED AS SHOWN, FROM WHICH;
21' FIR BEARS S26°W, 17.20' WITH SOME SCRIBE.
14" FIR BEARS N76°W, 8.60' WITH SOME SCRIBE.

MAINTENANCE: REMOVED BRUSH AND TREE LIMBS FROM CORNER AREA.
SET 5 FOOT STEEL POST 2 FEET SOUTH OF CORNER, PAINTED BT'S RED.



SKETCH OF CORNER

CERTIFICATION

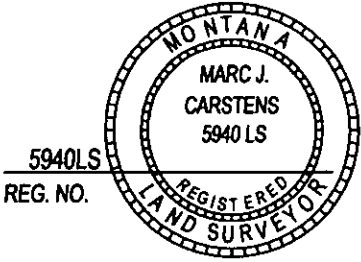
I, DAN CROFT
CERTIFY THE INFORMATION SHOWN HEREIN IS TRUE AND CORRECT.

SIGNATURE GROUND PARTY CHIEF

I, MARC J. CARSTENS
CERTIFY THAT THIS CORNER RECORD CORRECTLY REPRESENTS WORK
PERFORMED BY ME OR UNDER MY DIRECTION IN COMPLIANCE WITH THE
"CORNER RECORDATION ACT" (70-22-101, ET SEQ., M.C.A.)

SIGNATURE OF SURVEYOR & SEAL

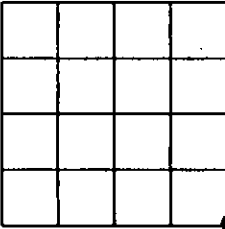
10-14-13
DATE
CARSTENS SURVEYING
EMPLOYER



5940LS
REG. NO.

OFFICE OF CLERK AND RECORDER, COUNTY OF LINCOLN
THIS 248111 BOOK: CCR CC&R'S PAGE: 12087 Pages: 1
STATE OF MONTANA LINCOLN COUNTY
AND RECORDED: 10/25/2013 12:45 KOI: CC&R'S
TAMMY D. LAUER CLERK AND RECORDER
FEE: \$0.00 BY:
COU FOR: CARSTENS LAND SURVEYING
CROSS INDEX NO. J-25 T. 32N R. 31W P.M.M.
ADOPTED JULY 1, 1981, MONTANA BOARD OF PROFESSIONAL ENGINEERS & LAND SURVEYORS

SEC. 12



● CORNER THIS SHEET