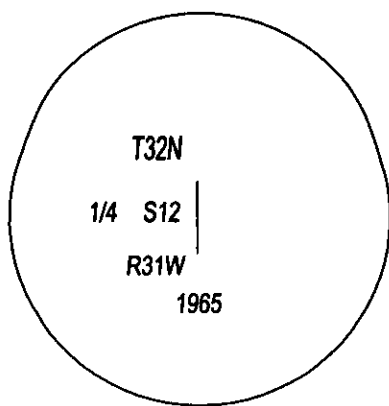
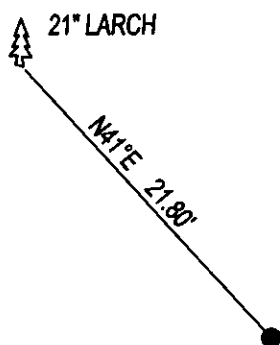


CERTIFIED CORNER RECORDATION

CORNER E1/4 SEC. 12 T. 32N R. 31W P.M.M., LINCOLN COUNTY

FOUND: 3 1/4" BLM BRASS CAP STAMPED AS SHOWN, FROM WHICH:
26" LARCH BEARS N43°W, 14.50 WITH OVERGROWN SCRIBE.

MAINTENANCE: REMOVED BRUSH AND TREE LIMBS FROM CORNER AREA.
SET STEEL POST 2 FEET SOUTH OF CORNER, PAINTED RED BANDS ON BT'S.



SKETCH OF CORNER

CERTIFICATION

I, DAN CROFT

CERTIFY THE INFORMATION SHOWN HEREIN IS TRUE AND CORRECT.

SIGNATURE GROUND PARTY CHIEF

I, MARC J. CARSTENS

CERTIFY THAT THIS CORNER RECORD CORRECTLY REPRESENTS WORK
PERFORMED BY ME OR UNDER MY DIRECTION IN COMPLIANCE WITH THE
"CORNER RECORDATION ACT" (70-22-101, ET SEQ., M.C.A.)

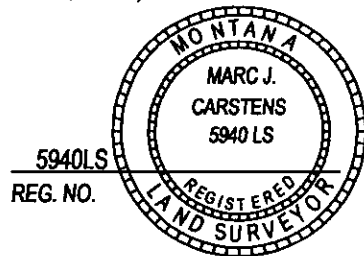
MJC
SIGNATURE OF SURVEYOR & SEAL

10-14-13

DATE

CARSTENS SURVEYING

EMPLOYER



5940LS
REG. NO.

OFFICE OF CLERK AND RECORDER, COUNTY OF LINCOLN

THI 248110 BOOK: CCR CC&R'S PAGE: 12086 Pages: 1

STATE OF MONTANA LINCOLN COUNTY

AN. RECORDED: 10/25/2013 12:40 KOI: CC&R'S

TAMMY D. LAUER CLERK AND RECORDER

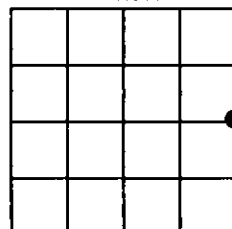
CO FEE: \$0.00

BY: Faunie Scriver
FOR: CARSTENS LAND SURVEYING

CROSS INDEX NO. G-25 T. 32N R. 31W P.M.M.

ADOPTED JULY 1, 1981, MONTANA BOARD OF PROFESSIONAL ENGINEERS & LAND SURVEYORS

SEC. 12



● CORNER THIS SHEET