

CERTIFIED CORNER RECORDATION

CORNER SE CORNER SEC. 13 T. 32N R. 31W P.M.M., LINCOLN COUNTY

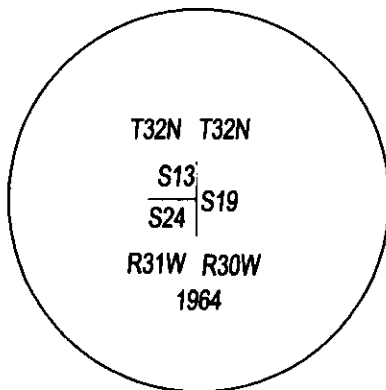
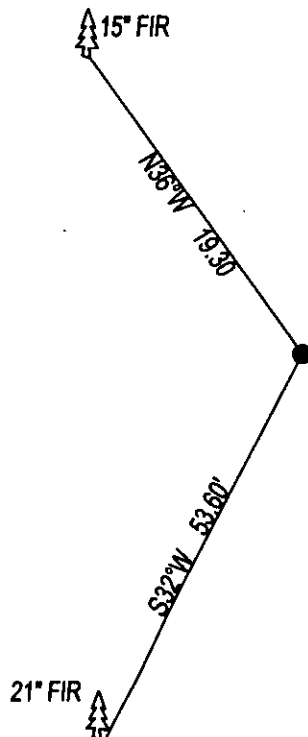
FOUND: 3 1/4" BLM BRASS CAP STAMPED AS SHOWN, FROM WHICH:

18' FIR BEARS S32°W, 53.60' WITH OVERGROWN SCRIBE.

15' FIR BEARS N36°W, 19.30' WITH OVERGROWN SCRIBE.

MAINTENANCE: REMOVED BRUSH AND TREE LIMBS FROM CORNER AREA.

SET 5 FOOT STEEL POST ON NORTH SIDE OF CORNER, PAINTED BT'S RED.



SKETCH OF CORNER

CERTIFICATION

I, DAN CROFT

CERTIFY THE INFORMATION SHOWN HEREIN IS TRUE AND CORRECT.

SIGNATURE GROUND PARTY CHIEF

I, MARC J. CARSTENS

CERTIFY THAT THIS CORNER RECORD CORRECTLY REPRESENTS WORK PERFORMED BY ME OR UNDER MY DIRECTION IN COMPLIANCE WITH THE "CORNER RECORDATION ACT" (70-22-101, ET SEQ., M.C.A.)

MJC
SIGNATURE OF SURVEYOR & SEAL

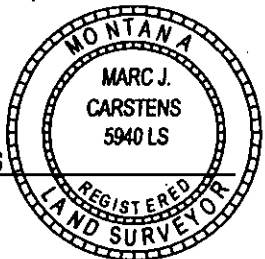
10-14-13

DATE

CARSTENS SURVEYING

EMPLOYER

5940LS
REG. NO.



OFFICE OF CLERK AND RECORDER COUNTY OF LINCOLN

THIS "C" 248109 BOOK: CCR CC&R'S PAGE: 12085 Pages: 1

STATE OF MONTANA LINCOLN COUNTY

AND IS RECORDED: 10/25/2013 12:35 KOI: CC&R'S

TAMMY D. LAUER CLERK AND RECORDER

FEE: \$0.00

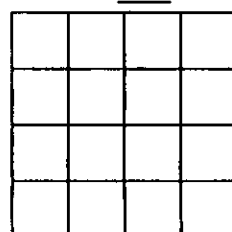
BY:

COUNTY FOR: CARSTENS LAND SURVEYING

CROSS INDEX NO. N-25 T. 32N R. 31W P.M.M.

ADOPTED JULY 1, 1981, MONTANA BOARD OF PROFESSIONAL ENGINEERS & LAND SURVEYORS

SEC. 13



● CORNER THIS SHEET