

CERTIFIED CORNER RECORDATION

Corner W 1/16 Sec 4 T 32 N. R. 31 W. P.M.M. LINCOLN County

I. Record: None

II. Found: During field search of area no monument or related accessories were found.

III. Perpetuation: At a computed point determined from survey, we set a 3 1/4 ins. diam. Alum. rock cap 6 ins. below ground level, marked as shown below from which:

A fir, 17 ins. diam., bears N.36°E., 42.60 ft. dist., scribed W 1/16 S4 BT.

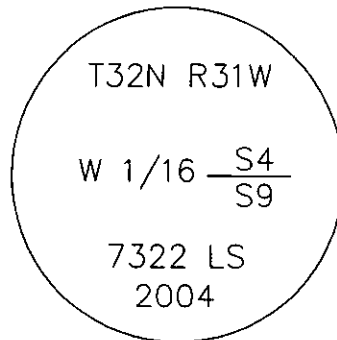
A fir, 9 ins. diam., bears S.24°E., 38.80 ft. dist., scribed W 1/16 S9 BT.

Painted faces red and 6 in. wide red bands to all bearing trees and attached Land Survey Monument and Bearing tree signs.

Set a steel post 3 ft. N. of monument.

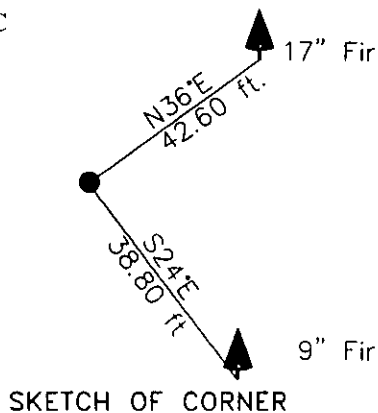
Magnetic declination: 20° East assumed

Equipment used: Hand compass and loggers tape



Kootenai Surveyors Inc., 314 California Av., Libby, MT. 59923 (406) 293-4354

KSI Project: Pipe Cr. - PCTC



SKETCH OF CORNER

CERTIFICATION

I, Kenneth R. Kern
certify the information shown herein is true and correct.
Kenneth Kern
Signature Ground Party Chief

I, Alvah F. Hughes
certify that this Corner Record correctly represents work performed by me or under my direction in compliance with the "Corner Recordation Act" (70-22-101, et seq., MCA).
Alvah F. Hughes
Signature of Surveyor & Sealer

Date: 12/1/2004 Reg. No. 7322-LS
Employer: Kootenai Surveyors Inc.

Office of Clerk and Recorder, County of Lincoln. This "corner

record" was filed for record or

was noted on the cross-index

book No. _____

188878 BOOK: CCR CC&R'S PAGE: 10861 Pages: 1

STATE OF MONTANA LINCOLN COUNTY

RECORDED: 10/18/2005 8:42 KOI: CC&R'S

CORAL M. CUMMINGS CLERK AND RECORDER

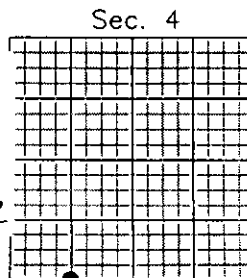
FEE: \$0.00

BY: Alvah F. Hughes

TO: KOOTENAI SURVEYORS INC. P.O. BOX 393, LIBBY, MT 59923

Cross Index No. E 10 T. 32N R. 31W P.M., MT

Adopted July 1, 1981, Montana Board of Professional Engineers & Land Surveyors



• corner this sheet