

CERTIFIED CORNER RECORDATION

Corner SW 1/16 Sec 4 T. 32 N. R. 31 W. P.M.M. LINCOLN County

I. Record: None

II. Found: During field search of area no monument or related accessories were found.

III. Perpetuation: At a computed point determined from survey, we set a 2 1/2 ins. diam. Alum. pipe 30 ins. long 24 ins. in the ground, with a 3 1/4 in. diam. Alum. cap marked as shown below from which:

A Grand fir, 6 ins. diam., bears N.23°E., 9.90 ft. dist., scribed SW 1/16 S4 BT.

A Grand fir, 5 ins. diam., bears S.87°E., 8.20 ft. dist., scribed SW 1/16 S4 BT.

Painted faces red and 6 in. wide red bands to all bearing trees and attached Land Survey Monument and Bearing tree signs.

Set a steel post 2 ft. W. of monument.

Magnetic declination: 18° East assumed

Equipment used: Hand compass and loggers tape

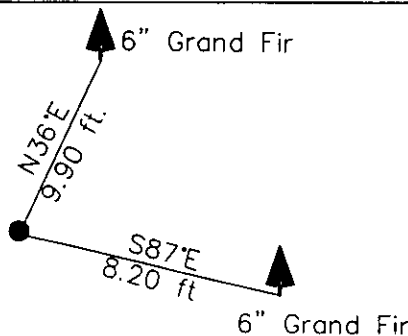
T32N R31W

SW 1/16  
S4

7322 LS  
2005

Kootenai Surveyors Inc., 314 California Av., Libby, MT. 59923 (406) 293-4354

KSI Project: Pipe Cr. - PCTC



SKETCH OF CORNER

CERTIFICATION

I, Kenneth Kern  
certify the information shown herein is true and correct.

Kenneth Kern  
Signature Ground Party Chief

I, Alvah F. Hughes  
certify that this Corner Record correctly represents work performed by me or under my direction in compliance with the "Corner Recordation Act" (70-22-101, et seq., M.C.A.)

Alvah F. Hughes  
Signature of Surveyor & Seal: 7322 LS

Date: 6/8/2005 Reg. No. 7322-LS

Employer: Kootenai Surveyors Inc.

Office of Clerk and Recorder, County of Lincoln This "corner

record" was filed for recor 188877 BOOK: CCR CC&R'S PAGE: 10860 Pages: 1

was noted on the cross-i STATE OF MONTANA LINCOLN COUNTY

book No. RECORDED: 10/18/2005 8:41 KOI: CC&R'S

CORAL M. CUMMINGS CLERK AND RECORDER

FEE: \$0.00

BY: Jeannie Danner

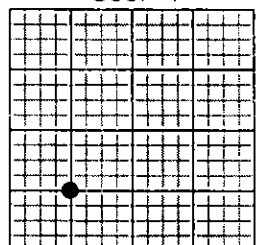
TO: KOOTENAI SURVEYORS INC. P.O. BOX 393, LIBBY, MT 59923

Cross Index No. D 10 T. 32N R. 31W P.M., MT

Adopted July 1, 1981, Montana Board of Professional Engineers & Land Surveyors

\\Manon\cl\Land Projects\3\Corner Rec\Pipe Shafter.dwg, 10/13/2005 2:59:18 PM, Auto HP LaserJet 4 Plus on ALVAH

Sec. 4



• corner this sheet