

186011 BOOK: CCR CC&R'S PAGE: 10820 Pages: 1
STATE OF MONTANA LINCOLN COUNTY
RECORDED: 07/15/2005 12:00 KOI: CC&R'S
CORAL M. CUMMINGS CLERK AND RECORDER
FEE: \$0.00 BY: _____
TO: FILED- ALVAH F. HUGHES-SURVEYOR

CERTIFIED CORNER RECORDATION

Corner W 1/16 Sec 4 T 32 N. R. 31 W. P.M.M. LINCOLN County

I. Record: None

II. Found: During field search of area no monument or related accessories were found.

III. Perpetuation: At a computed point determined from survey, we set a 3 1/4 ins. diam. Alum. rock cap 6 ins. below ground level, marked as shown below from which:

A fir, 17 ins. diam., bears N.36°E., 42.60 ft. dist., scribed W 1/16 S4 BT.

A fir, 9 ins. diam., bears S.24°E., 38.80 ft. dist., scribed W 1/16 S9 BT.

Painted faces red and 6 in. wide red bands to all bearing trees and attached Land Survey Monument and Bearing tree signs.

Set a steel post 3 ft. N. of monument.

Magnetic declination: 20° East assumed

Equipment used: Hand compass and loggers tape

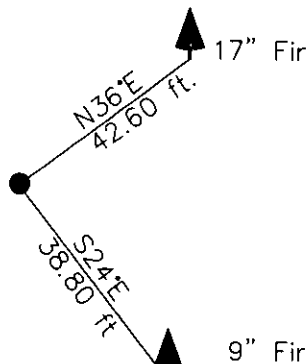
T32N R31W

W 1/16 S4
S9

7322 LS
2004

Kootenai Surveyors Inc., 314 California Av., Libby, MT. 59923 (406) 293-4354

KSI Project: Pipe Cr. - PCTC



SKETCH OF CORNER

CERTIFICATION

I, Kenneth R. Kern
certify the information shown herein is true and correct.

Kenneth R. Kern
Signature Ground Party Chief

I, Alvah F. Hughes
certify that this Corner Record correctly represents work performed by me or under my direction in compliance with the "Corner Recordation Act" (70-22-101, et seq., M.C.A.)

Alvah F. Hughes
Signature of Surveyor & Seal

Date: 12/1/2004 Reg. No. 7322-LS

Employer: Kootenai Surveyors Inc.

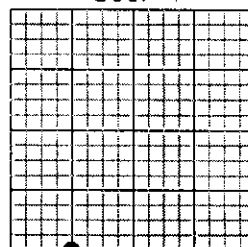
Office of Clerk and Record: 186011 BOOK: CCR CC&R'S PAGE: 10820 Pages: 1
record" was filed for recor: STATE OF MONTANA LINCOLN COUNTY
was noted on the cross-in: RECORDED: 07/15/2005 12:00 KOI: CC&R'S
book No. CORAL M. CUMMINGS CLERK AND RECORDER
FEE: \$0.00 BY: Francis Dwyer
TO: FILED- ALVAH F. HUGHES-SURVEYOR

County Official

Cross Index No. E 10 T. 32N R. 31W P.M., MT

Adopted July 1, 1981, Montana Board of Professional Engineers & Land Surveyors

Sec. 4



• corner this sheet