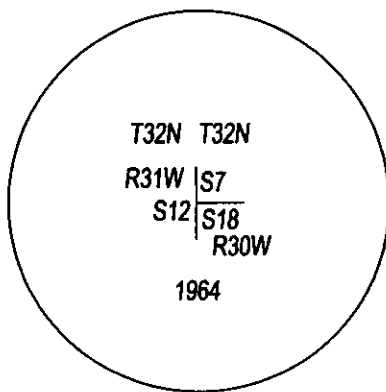
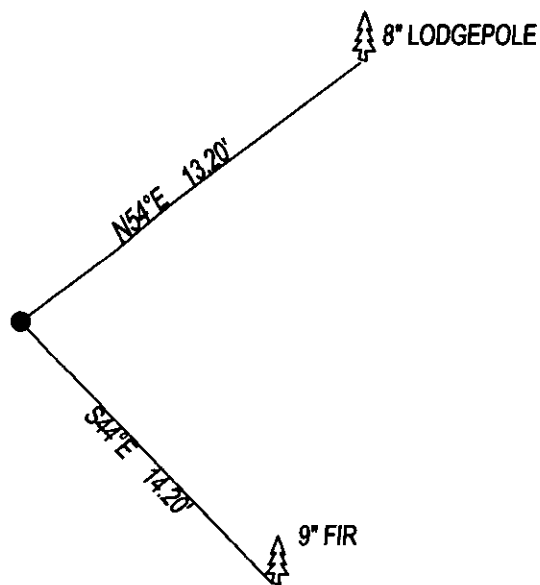


CERTIFIED CORNER RECORDATION

CORNER SW CORNER SEC. 7 T. 32N R. 30W P.M.M., LINCOLN COUNTY

FOUND: 3 1/4" BLM BRASS CAP STAMPED AS SHOWN, FROM WHICH;
9" FIR BEARS S44°E, 14.20 WITH SOME SCRIBE.
8" LODGEPOLE BEARS N54°E, 13.20' SCRIBED T32N R30W S7 CC BT.

MAINTENANCE: REMOVED BRUSH AND TREE LIMBS FROM CORNER AREA.
SET 5 FOOT STEEL POST 4.66 FEET EAST OF CORNER, PAINTED BT'S RED.



SKETCH OF CORNER

CERTIFICATION

I, DAN CROFT
CERTIFY THE INFORMATION SHOWN HEREIN IS TRUE AND CORRECT.

SIGNATURE GROUND PARTY CHIEF

I, MARC J. CARSTENS
CERTIFY THAT THIS CORNER RECORD CORRECTLY REPRESENTS WORK
PERFORMED BY ME OR UNDER MY DIRECTION IN COMPLIANCE WITH THE
"CORNER RECORDATION ACT" (70-22-101, ET SEQ., M.C.A.)

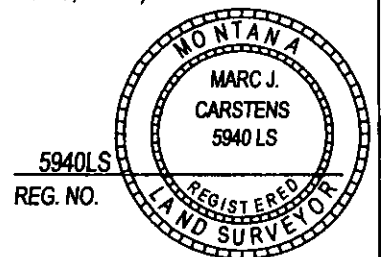
Marc J. Carstens
SIGNATURE OF SURVEYOR & SEAL

10-14-13

DATE

CARSTENS SURVEYING

EMPLOYER



5940LS
REG. NO.

OFFICE OF CLERK AND RECORDER, COUNTY OF LINCOLN

THIS 248108 BOOK: CCR CC&R'S PAGE: 12084 Pages: 1

STATE OF MONTANA LINCOLN COUNTY

AND RECORDED: 10/25/2013 12:30 KOT: CC&R'S

TAMMY D. LAUER CLERK AND RECORDER

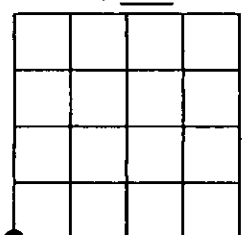
FEE: \$0.00 BY: Gennie D. Lauer

FOR: CARSTENS LAND SURVEYING

CROSS INDEX NO. J-1 T. 32N R. 30W P.M.M.

ADOPTED JULY 1, 1981, MONTANA BOARD OF PROFESSIONAL ENGINEERS & LAND SURVEYORS

SEC. 7



● CORNER THIS SHEET