

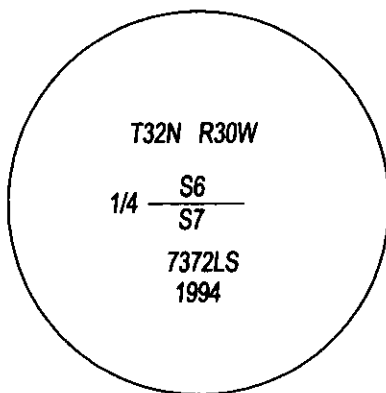
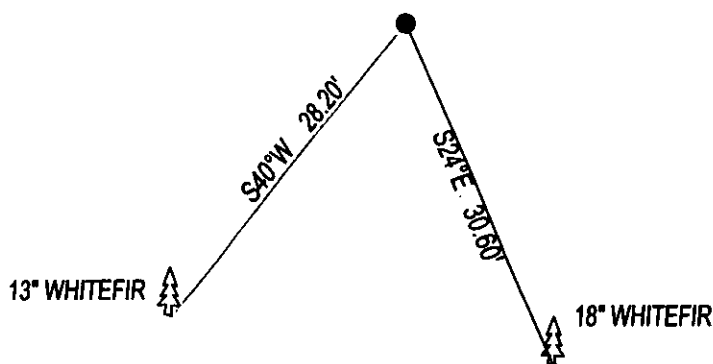
CERTIFIED CORNER RECORDATION

CORNER N1/4 CORNER SEC. 7 T. 32N, R. 30W, P.M.M., LINCOLN COUNTY

FOUND: 3 1/4" ALUM CAP STAMPED AS SHOWN, FROM WHICH;

18" WHITEFIR BEARS S24°E, 30.60' WITH SOME SCRIBE.
13" WHITEFIR BEARS S40°W, 28.20' WITH SOME SCRIBE.

MAINTENANCE: REMOVED BRUSH AND TREE LIMBS FROM CORNER AREA.
SET STEEL POST 3 FEET EAST OF CORNER, PAINTED RED BANDS ON BT'S.



SKETCH OF CORNER

CERTIFICATION

I, DAN CROFT
CERTIFY THE INFORMATION SHOWN HEREIN IS TRUE AND CORRECT.

SIGNATURE GROUND PARTY CHIEF

I, MARC J. CARSTENS
CERTIFY THAT THIS CORNER RECORD CORRECTLY REPRESENTS WORK
PERFORMED BY ME OR UNDER MY DIRECTION IN COMPLIANCE WITH THE
"CORNER RECORDATION ACT" (70-22-101, ET SEQ., M.C.A.)

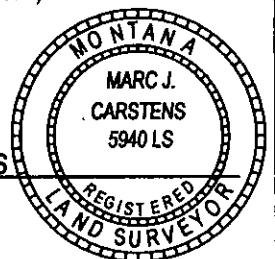

SIGNATURE OF SURVEYOR & SEAL

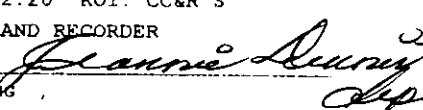
10-14-13

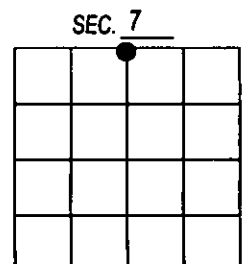
DATE

CARSTENS SURVEYING
EMPLOYER

5940LS
REG. NO.



OFFICE OF CLERK AND RECORDER, COUNTY OF LINCOLN
THIS 1 248106 BOOK: CCR CC&R'S PAGE: 12082 Pages: 1
STATE OF MONTANA LINCOLN COUNTY
AND IS RECORDED: 10/25/2013 12:20 KOI: CC&R'S
TAMMY D. LAUER CLERK AND RECORDER
FEE: \$0.00 BY: 
COUN. FOR: CARSTENS LAND SURVEYING
CROSS INDEX NO. E-3 T. 32N, R. 30W, P.M.M.
ADOPTED JULY 1, 1981, MONTANA BOARD OF PROFESSIONAL ENGINEERS & LAND SURVEYORS



● CORNER THIS SHEET