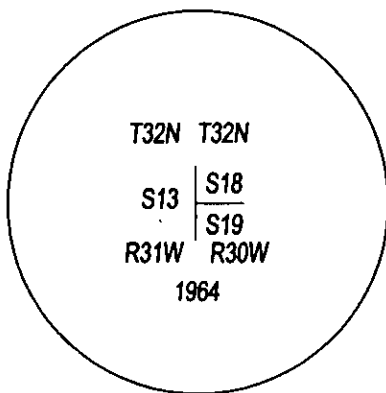
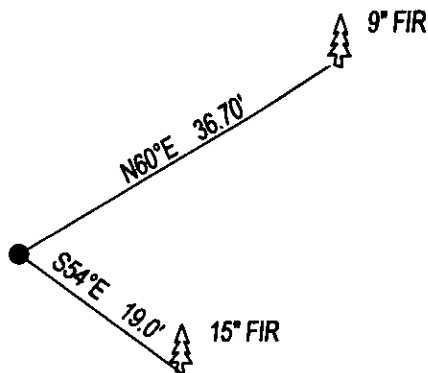


CERTIFIED CORNER RECORDATION

CORNER SW CORNER SEC. 18 T. 32N , R. 30W , P.M.M., LINCOLN COUNTY

FOUND: 3 1/4" BLM BRASS CAP SET IN ROCK STAMPED AS SHOWN, FROM WHICH;  
9" FIR BEARS N60°E, 36.70 SCRIBED T32N R30W S18 CC BT.  
15" FIR BEARS S54°E, 19.0 WITH OVERGROWN SCRIBE.

MAINTENANCE: REMOVED BRUSH AND TREE LIMBS FROM CORNER AREA.  
SET STEEL POST 1 FOOT NORTH OF CORNER, PAINTED RED BANDS ON BT'S.



SKETCH OF CORNER

CERTIFICATION

I, DAN CROFT  
CERTIFY THE INFORMATION SHOWN HEREIN IS TRUE AND CORRECT.

SIGNATURE GROUND PARTY CHIEF

I, MARC J. CARSTENS  
CERTIFY THAT THIS CORNER RECORD CORRECTLY REPRESENTS WORK  
PERFORMED BY ME OR UNDER MY DIRECTION IN COMPLIANCE WITH THE  
"CORNER RECORDATION ACT" (70-22-101, ET SEQ., M.C.A.)

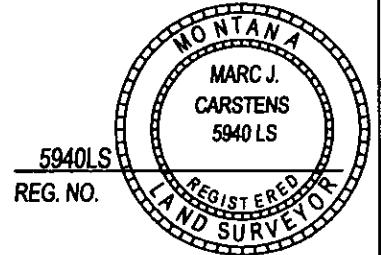
SIGNATURE OF SURVEYOR & SEAL

10-14-13

DATE

CARSTENS SURVEYING

EMPLOYER



5940LS  
REG. NO.

OFFICE OF CLERK AND RECORDER, COUNTY OF LINCOLN

TH 248103 BOOK: CCR CC&R'S PAGE: 12079 Pages: 1

STATE OF MONTANA LINCOLN COUNTY

AM RECORDED: 10/25/2013 12:05 KOI: CC&R'S

TAMMY D. LAUER CLERK AND RECORDER

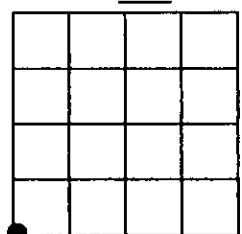
— FEE: \$0.00

CC FOR: CARSTENS LAND SURVEYING

CROSS INDEX NO. N-1 T. 32N , R. 30W , P.M.M.

ADOPTED JULY 1, 1981, MONTANA BOARD OF PROFESSIONAL ENGINEERS & LAND SURVEYORS

SEC. 18



● CORNER THIS SHEET