

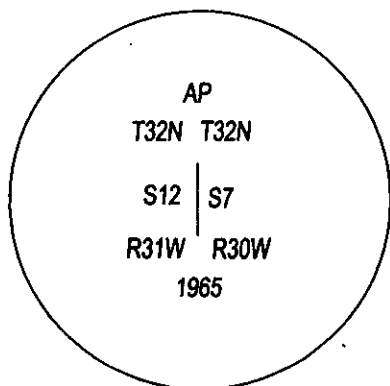
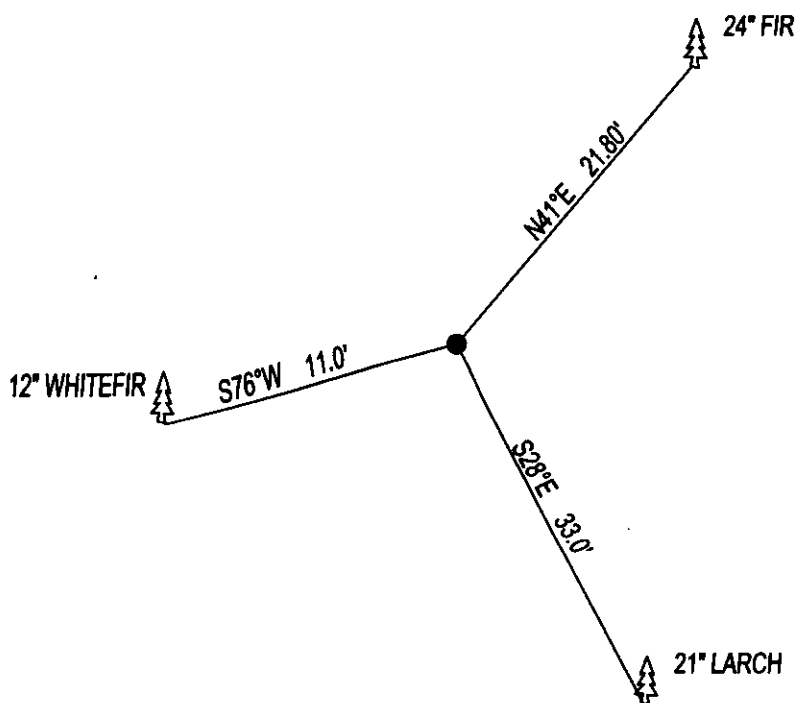
CERTIFIED CORNER RECORDATION

CORNER ANGLE POINT SEC. 7 T. 32N , R. 30W , P.M.M., LINCOLN COUNTY

FOUND: 3 1/4" BLM BRASS CAP STAMPED AS SHOWN, FROM WHICH,;

24" FIR BEARS N41°E, 21.80 WITH OVERGROWN SCRIBE.
21" LARCH SNAG BEARS S28°E, 33.0 SCRIBED AP S7 BT.
12" WHITEFIR BEARS S76°W, 11.0 WITH SOME SCRIBE.

MAINTENANCE: REMOVED BRUSH AND TREE LIMBS FROM CORNER AREA.
SET STEEL POST 2 FEET SOUTH OF CORNER, PAINTED RED BANDS ON BT'S.



SKETCH OF CORNER

CERTIFICATION

I, DAN CROFT

CERTIFY THE INFORMATION SHOWN HEREIN IS TRUE AND CORRECT.

SIGNATURE GROUND PARTY CHIEF

I, MARC J. CARSTENS

CERTIFY THAT THIS CORNER RECORD CORRECTLY REPRESENTS WORK PERFORMED BY ME OR UNDER MY DIRECTION IN COMPLIANCE WITH THE "CORNER RECORDATION ACT" (70-22-101, ET SEQ., M.C.A.)

Marc J. Carstens
SIGNATURE OF SURVEYOR & SEAL

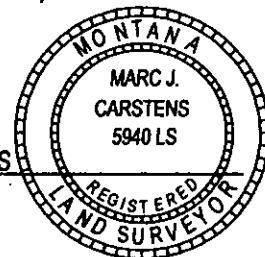
10-14-13

DATE

CARSTENS SURVEYING

EMPLOYER

5940LS
REG. NO.



OFFICE OF CLERK AND RECORDER COUNTY OF LINCOLN

THIS "C" 248102 BOOK: CCR CC&R'S PAGE: 12078 Pages: 1

STATE OF MONTANA LINCOLN COUNTY

AND IS RECORDED: 10/25/2013 12:00 KOI: CC&R'S

TAMMY D. LAUER CLERK AND RECORDER

FEE: \$0.00

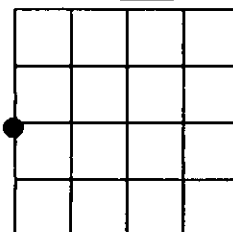
BY: James R. Ruppel

COUNT FOR: CARSTENS LAND SURVEYING P.O. BOX 1374, POLSON, MONTANA

CROSS INDEX NO. G-1 T. 32N , R. 30W , P.M.M.

ADOPTED JULY 1, 1981, MONTANA BOARD OF PROFESSIONAL ENGINEERS & LAND SURVEYORS

SEC. 7



● CORNER THIS SHEET