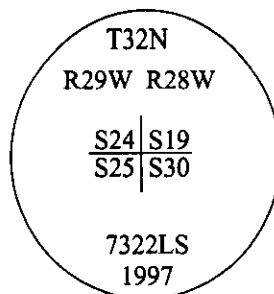


CERTIFIED CORNER RECORDATION

Corner Sec. Cor. Sec. S.E. S24 T. 32N R. 29W P.M., MT Lincoln County

- I. 1902 G.L.O. Original Record by Paul S. A. Bickel et. al: Set a trachite stone, 24x9x5 ins., 18 ins. in the ground, for cor. of secs. 19, 24, 25, & 30, mkd. with 2 notches on S. and 4 notches on N. edges. Established four bearing trees:
- II. No evidence found of stone monument. Found two of the original bearing trees and two stumps, from which:

A pine, 21 ins. diam., bears N31°30'E, 25.08 ft. dist., "R" "S" "B" visible. (record)
A pine, 20 ins. diam., bears S48°30'E, 33.0 ft. dist., burned face no visible scribing. (record)
A stump, bears S48°W, 49.5 ft. dist., burned with no visible scribing. (record-S58°W)
A stump, bears N57°W, 63.36 ft. dist., burned with no visible scribing. (record-N52°W)
- II. At the corner point, set by distance-distance intersect from original found bearing trees, a 30 ins. long aluminum pipe, 2 1/2 in. diam., 20 ins. in the ground, with a 3 1/4 in. diam. aluminum cap, mkd. as shown, raised a rock collar around the monument and set a 6 ft. galvanized steel post, West, 3.0 ft. dist. with Land Survey Monument and Property Boundary decals attached.

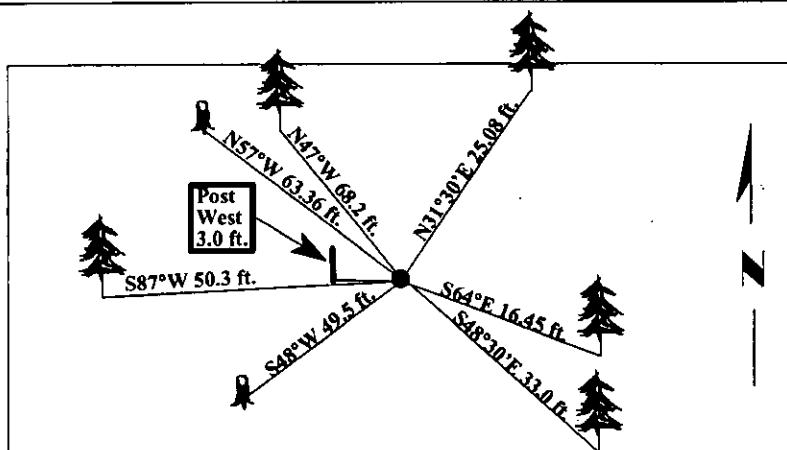


Established three new bearing trees:

- A pine, 17 ins. diam., bears S64°E, 16.45 ft. dist., mkd. "T32N R28W S30 BT".
- A fir, 5 ins. diam., bears S87°W, 50.3 ft. dist., mkd. "T32N R29W S25 BT".
- A pine, 7 ins. diam., bears N47°W, 68.2 ft. dist., mkd. "T32N R29W S24 BT".

Painted bearing trees and attached Land Survey Monument and Bearing Tree signs.

Magnetic Declination: 20° East.



SKETCH OF CORNER

CERTIFICATION

I, Thomas Hommel certify the information shown herein is true and correct.

I, Alvah F. Hughes certify that this Corner Record correctly represents work performed by me or under my direction in compliance with the "Corner Recordation Act" (70-22-101, et seq., M.C.A.).

Date: 11/13/97

Reg. No.: 7322LS

Employer: U.S. FOREST SERVICE

Office of Clerk and Recorder, County of Lincoln. This "corner record" was filed for record on 12-26-97 was noted on the cross-index plat and is assigned page No. 9999 in book No. _____

Coral M. Cummings County Official

Sec. 24

• - corner this sheet