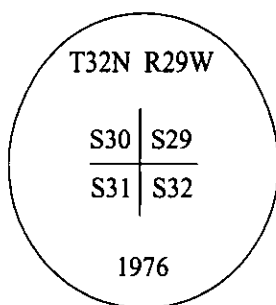
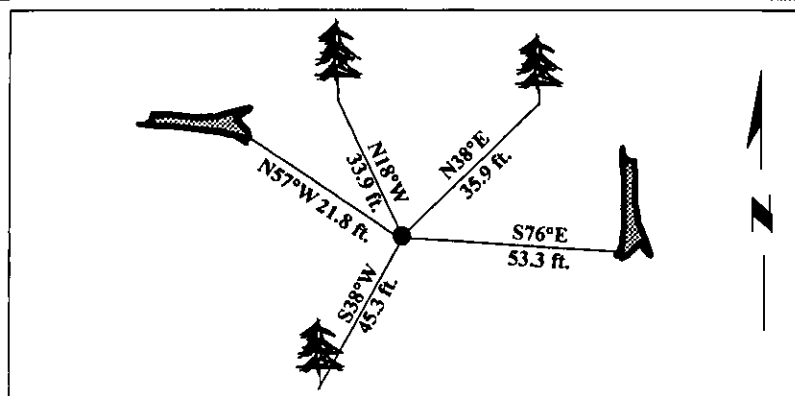
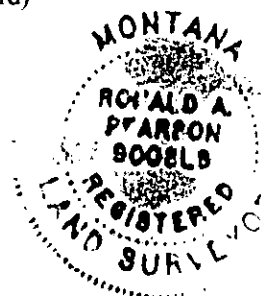


Corner	Sec. Cor.	Sec.	29,30 31&32	T.	32N	R.	29W	P.M., MT	Lincoln	County
--------	-----------	------	----------------	----	-----	----	-----	----------	---------	--------

- At the corner point, set an iron pipe, 30 ins. long, 2 1/2 ins. in diam., 24 ins. in the ground, with brass cap mkd. as shown:



**Magnetic Declination:** 20° East.



### SKETCH OF CORNER

### CERTIFICATION

I, Rex O. Rice  
certify the information shown herein is true and correct.

I, Ronald A. Pearson  
 certify that this Corner Record correctly represents work performed by me or under my  
 direction in compliance with the "Corner Recordation Act" (70-22-101, et seq., M.C.A.)

Signature of Surveyor & Seal

Date: 12/30/96

Reg. No.: 9008LS

Employer: **U.S. FOREST SERVICE**

Office of Clerk and Recorder, County of LINCOLN. This "corner record" was filed for record on FEB 3, 1997 was noted on the cross-index plat and is assigned page No. 9034, in book No. CORAL M. CUMMINGS *LM*

County Official

Sec. 32

● - corner this sheet

Cross Index No. V-5 T. 32N R. 29W P.M., MT

Adopted July 1, 1981, Montana Board of Professional Engineers & Land Surveyors