

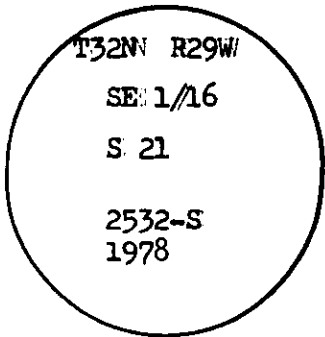
CERTIFIED LAND CORNER RECORDATION
(REFERENCE FSM 7153.53)

DESCRIPTION OF CORNER EVIDENCE FOUND, AND ORIGINAL RECORD (IF KNOWN)

No original record of corner establishment on file.
No evidence of corner found in ground.

DESCRIPTION OF MONUMENT AND ACCESSORIES ESTABLISHED
TO PERPETUATE THE ORIGINAL LOCATION OF THIS CORNER:

Date of work:.....



Set a 2½" X 30" aluminum pipe with cap 24" in ground.
Raised a 2½' mound of stone to top of cap.

from which a

Pine 10" dia. bears N76°E 5.4 ft. marked SE 1/16 S21 BT.

Fir 7" dia. bears N54°W 26.9 ft. marked SE 1/16 S21 BT.
Refer to Certificate of Survey, subdivision of section 21
T32N R29W, S as recorded in Lincoln County Courthouse, Libby, Montana..

SKETCH, WITH COURSE AND DISTANCE TO ADJACENT CORNERS IF DETERMINED IN THIS SURVEY.
(MAY SKETCH OR PASTE REPRODUCTION ON REVERSE SIDE.)

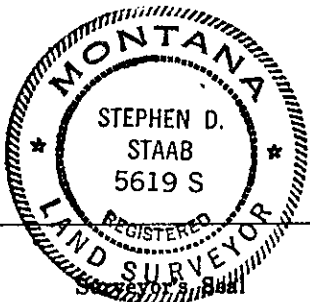
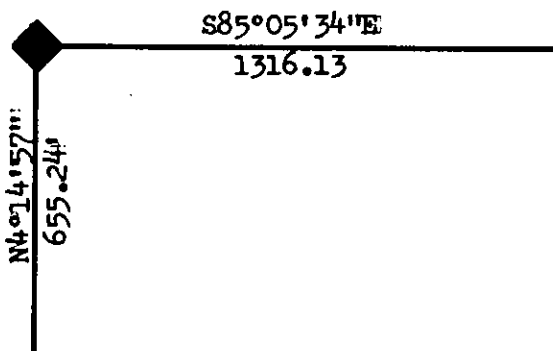
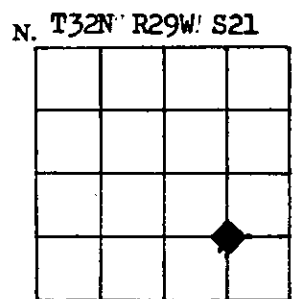


DIAGRAM OF CORNER:



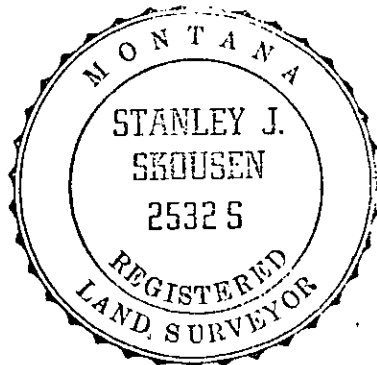
I, Stephen D. Staab 5619S
certify that the information shown herein is true and correct.

Stephen D. Staab
Signature of Ground Party Chief

I, Stanley J. Skousen 2532-S
certify that I have carefully performed or reviewed the work done on the diagrammed corner as reported on this recordation form and approve the same.

Stanley J. Skousen
Signature of Surveyor

◆ = Corner recorded on the sheet



7532S

Registration Number

Office of Clerk and Recorder, County of Lincoln

This "corner record" was filed for record on the 5th day of March 1980, was noted on the cross-index plat and is assigned page No. 762, in book No. 1

Eleanor L. Vaughn by Sherry L. Hawks
County Official Deputy

Cross Index No. Q-12 T. 32N R. 29W Mer.