

CERTIFIED LAND CORNER RECORDATION
(REFERENCE FSM 7153.53)

DESCRIPTION OF CORNER EVIDENCE FOUND, AND ORIGINAL RECORD (IF KNOWN)

NONE

DESCRIPTION OF MONUMENT AND ACCESSORIES ESTABLISHED
TO PERPETUATE THE ORIGINAL LOCATION OF THIS CORNER:

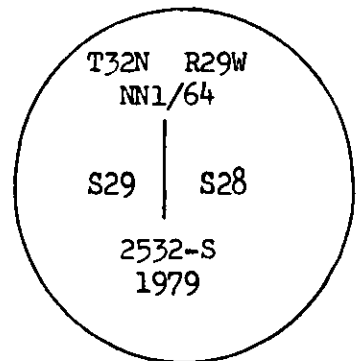
Date of work: 1979

Set a 2 1/2"X30" Aluminum pipe with cap marked::

From which a 14" Cedar,, N 83° W, 19.2 feet, scribed NN1/64 S28 BT
8" Fir, S 62° E, 10.8 feet, scribed NN 1/64 S28 BT

Placed BT signs and painted a red band around trees.

Placed a fiberglass post next to corner with Forest Boundary
and Attention signs attached.



SKETCH, WITH COURSE AND DISTANCE TO ADJACENT CORNERS IF DETERMINED IN THIS SURVEY.
(MAY SKETCH OR PASTE REPRODUCTION ON REVERSE SIDE.)

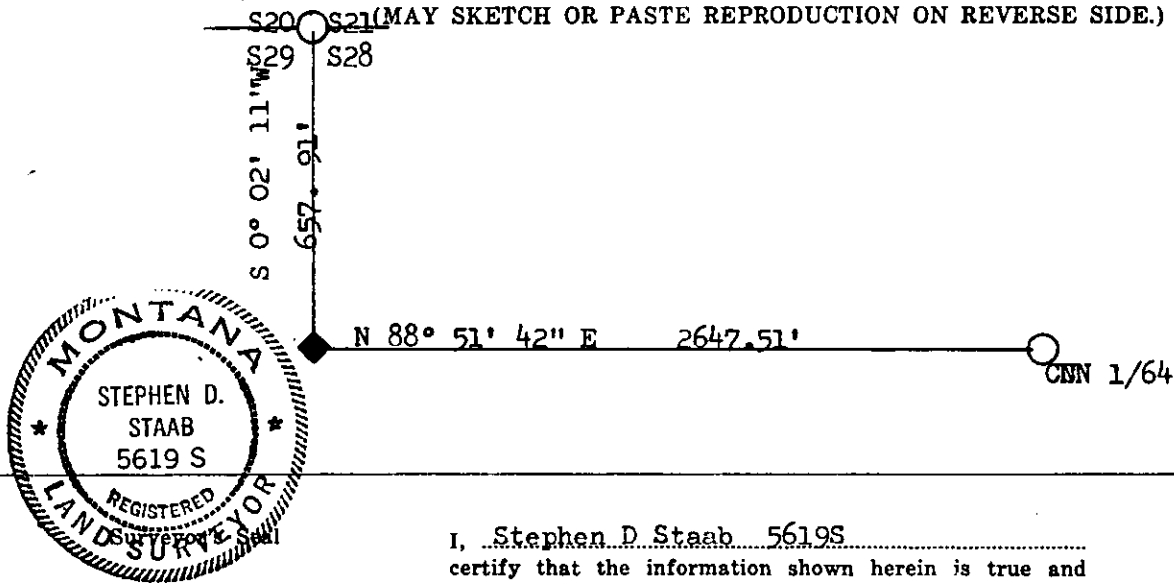
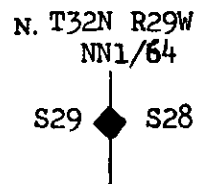


DIAGRAM OF CORNER:



I, Stephen D. Staab 5619S
certify that the information shown herein is true and correct.

Stephen D. Staab
Signature of Ground Party Chief

I, Stanley J. Skousen
certify that I have carefully performed or reviewed the
work done on the diagrammed corner as reported on this
recordation form and approve the same.

Stanley J. Skousen
Signature of Surveyor

◆ = Corner recorded on the sheet

2532S
Registration Number

Office of Clerk and Recorder, County of *Lincoln*

This "corner record" was filed for record on the *5th* day of *March*, 19*80*, was noted on the cross-index plat and is
assigned page No. *753*, in book No. *1*

Eleanor J. Taugher, by Betty Lee, Deputy
County Official

Cross Index No. *R 9* T *32N* R *29W* Mer.