

CERTIFIED LAND CORNER RECORDATION
(REFERENCE FSM 7153.53)

DESCRIPTION OF CORNER EVIDENCE FOUND, AND ORIGINAL RECORD (IF KNOWN)

NONE

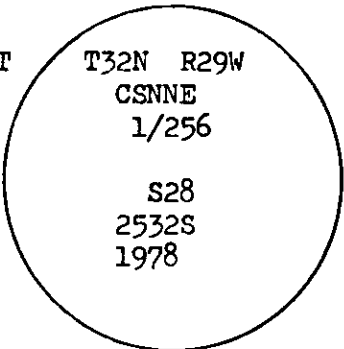
DESCRIPTION OF MONUMENT AND ACCESSORIES ESTABLISHED
TO PERPETUATE THE ORIGINAL LOCATION OF THIS CORNER:

Date of work: 1978

Set a 2 1/2"X30" Aluminum pipe with cap marked::

From which an 8" Tamarack,, S 68° E, 25.2 feet, scribed CSNNEL/256 BT
10" Pine, S 62° W, 35.0 feet, scribe CSNNE 1/256 BT

Placed BT signs and painted a red band around trees.
Placed a fiberglass post next to corner with Forest Boundary and
Attention signs attached.



SKETCH, WITH COURSE AND DISTANCE TO ADJACENT CORNERS IF DETERMINED IN THIS SURVEY.
(MAY SKETCH OR PASTE REPRODUCTION ON REVERSE SIDE.)

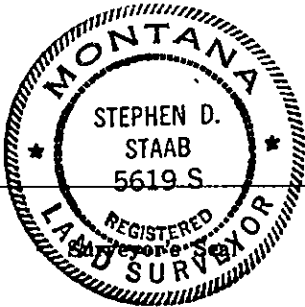
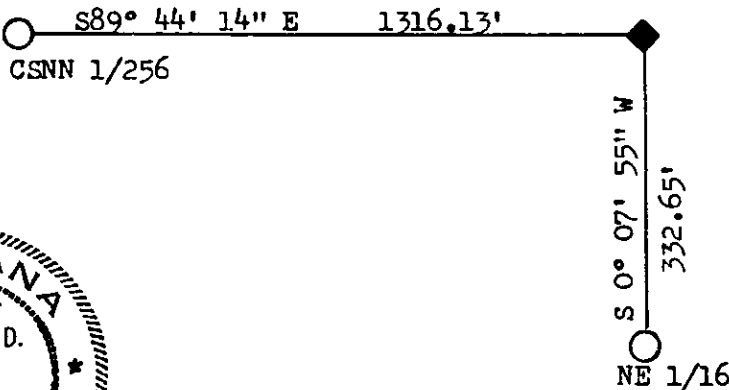
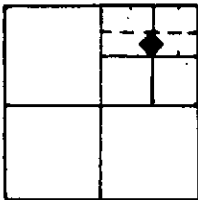


DIAGRAM OF CORNER:

N. T32N R29W S28
CSNNE 1/256



◆ = Corner recorded on the sheet

I, Stephen D. Staab 5619S
certify that the information shown herein is true and correct.

Signature of Ground Party Chief

I, Stanley J. Skousen
certify that I have carefully performed or reviewed the work done on the diagrammed corner as reported on this recordation form and approve the same.

Signature of Surveyor

2532 S
Registration Number

Office of Clerk and Recorder, County of Lincoln

This "corner record" was filed for record on the 5th day of March 1980, was noted on the cross-index plat and is assigned page No. 751, in book No. 1

County Official

Cross Index No. 512 T. 32N R. 29W Mer.